

# **2013 Youth Survey Report Newtown, Connecticut**

**Administered April, 2013**

**Report Prepared by:**

**Archie C. Swindell, PhD, Quantitative Services**

**August 5, 2013**

## **ACKNOWLEDGEMENTS**

This youth survey was sponsored by the Newtown Prevention Council and Newtown Public Schools, and was conducted under the Drug-Free Communities Support Program grant from the federal Department of Health and Human Services. It is designed to ascertain prevalence, attitudes and behaviors related to use of substances (tobacco, alcohol, and illicit drugs). This is the third Newtown survey administered by Quantitative Services. Newtown parents were also surveyed in 2013; results are reported separately.

The youth survey was derived from the Connecticut Governor's Prevention Initiative for Youth (GPIY) survey. The original GPIY survey was administered in paper format in Newtown in 2002, 2005, and 2007, using materials provided by the Connecticut Department of Mental Health and Addiction Services (DMHAS). The surveys in 2009, 2011, and 2013 were given on-line, using SurveyMonkey.com, with wording of questions the same as in the GPIY survey. Changes in the 2013 survey were made to conform to current core measures language, and to include recently introduced substances. Minor additions and clarifications developed by prevention coalitions in towns across Connecticut are included, and are gratefully acknowledged. The survey has been approved by the Drug Free Communities team.

As with previous surveys, the author sincerely appreciates the efforts of Judy Blanchard, Newtown District Health Coordinator; Dr. Linda Gejda, Assistant Superintendent; and the administration and teachers of the Newtown Public Schools. Special thanks go to the youths who shared their personal experiences and opinions. All results of the survey are anonymous, and cannot be traced to any individuals. Results are reflective of the entire community, not primarily its schools. This report is structured according to Newtown Youth Survey reports of 2009 and 2011. Comparisons utilize the five previous Newtown reports [1,2,3,4,5], and the national Monitoring The Future (MTF) surveys [6]. The data on which this report is based are subject to confidentiality regulations of HIPAA [7] and FERPA [8]

## **DISCLAIMER**

Opinions expressed herein are the views of the author and may not necessarily reflect the views, official policy or position of Newtown Public Schools, the Connecticut Department of Mental Health and Addiction Services (DMHAS), the Center for Substance Abuse Prevention (CSAP), Substance Abuse and Mental Health Services Administration (SAMHSA), the U.S. Department of Health and Human Services, or any other associated organization.

## SUMMARY

The availability of data from six surveys of Newtown youth, spanning the 12 years from 2002 to 2013, allows for tracking of trends in substance use and key related factors. The substances being tracked include cigarettes, alcohol, and marijuana, plus a variety of illicit drugs and the abuse of OTC meds and prescription meds without one's own medical order or prescription. Newtown data can be placed in context with national data, comparing with annual Monitoring The Future survey results posted on the web.

Greatest success has been registered with cigarette smoking, which has been declining nationally over the past decade or more. Smoking among younger Newtown youth has remained well below national averages, and prevalence among youth in grades 11-12 has fallen dramatically, and is now about one-half national figures. Lessons from the positive results with cigarette smoking include the fact that educating about dangerous effects of a substance (tobacco) can persuade youth not to engage. But the effort requires many years, and is probably subject to reversal if efforts slack.

The success in reducing underage drinking in Newtown is confirmed by several facts. Reported lifetime and 30-day alcohol use by Newtown middle school youth in grades 7-8 has remained less than national prevalences, and has steadily declined since 2002. Among Newtown high school youth, grades 9-12, drinking was above national averages early in the 2000's, but is now at or below national levels. The ease with which youth can obtain alcohol has decreased, 2009 to 2013, and is similar to national experience. Fewer Newtown youth report in 2013 that "most" of their close friends drink. Figures for the perception that regular alcohol use carries little or no risk of harm have remained under 10% for all Newtown youth. Adult modeling of alcohol consumption appears to have improved in Newtown, especially among high school youth, who report fewer alcohol-related problems in their families.

The picture with marijuana use in Newtown is similar to cigarettes and alcohol in some regards, but there are special concerns. Use of marijuana at least once in their lifetime by Newtown youth in grades 7-10 is well below national averages, and had been trending down. A recent uptick in use may signal a new trend or may be a statistical anomaly of this highly variable measure – only time will tell. Lifetime use in grades 11-12 remained about the same (about 45%), 2011 to 2013, near national averages. But use at least once in the previous 30 days in grades 11-12 increased from 24% to 38% in the same period, and more intense use (more than 10 of the past 30 days) increased from 8% to 11%. This pattern suggests that no more older youth are experimenting with marijuana, but those who do are more likely to become chronic users. Also of concern is the fact that lifetime marijuana users reported starting earlier than previously, even younger than with cigarettes or alcohol. Finally, marijuana users in Newtown in grades 11-12 in 2013 were much more likely (24-fold) to have used other illicit substances, a finding similar to other Connecticut towns.

Success with reduced tobacco use among youth through education suggests that the same general approach could succeed with marijuana. As we enter an era of increasing access and decreasing approbation towards "medicinal" marijuana, informing youth of the hazards of cannabinoids is likely to be increasingly important, to counter the false message of "harmlessness", widespread among youth and some parents. This effort is likely to be very long-term, similar to cigarettes.

The abuse of prescription meds by youth (for recreational use, without a prescription) has increased nationally in recent years, and is a cause of great concern. In Newtown, such abuse is well below national averages, but is not negligible, and it is important to monitor trends closely. Some effective elements in combatting abuse are: take-back programs, a no-questions drug depository in

the police station, educating parents about securing their meds, and persuading doctors to limit prescriptions of addictive pain meds.

Because of the tragic event in Newtown in December of 2012, special attention was paid to perceptions among youth of their personal safety, in school and in their neighborhood, and how perceptions may have changed. In Newtown surveys, respondents have been asked to register their level of agreement (in a 4-level scale from “strongly disagree” to “strongly agree”) to two questions: “I feel safe at school”, and “My community is a safe place”. Disagreement with both statements was low, less than 10%, and there was little change between 2011 and 2013. In fact, youth in grades 9-10 responded in a more positive manner. The surveys also include an 18-point battery of questions about self-concept, both positive (e.g., “I am good at making decisions”) and negative (e.g., “I feel no one understands me”). Average responses to the six negative questions suggested that feelings of mild depression may have increased in 2013. However, a more thorough analysis failed to confirm any statistical significance of this effect. The absence of negative feelings among middle school and high school students in Newtown is doubtlessly due, at least in part, to the intensive counseling efforts that have taken place.

## **RESULTS AND DISCUSSION**

### **Background**

The 2013 survey continues the practice Newtown Public Schools began in the early 1990’s, of surveying to determine the prevalence of substance use and associated perceptions and behaviors among the youth of the community, and the perceptions and behaviors of youth. Newtown surveys have been consistently given during April, and this one was given April 8-11, 2013. A complementary parent survey was given April 8 to May 17, 2013. Totals of 911 youth in grades 7-12 and 770 of their parents completed their respective surveys. Parent results are reported separately.

The 2013 youth survey was essentially the same as in 2009 and 2011, with minor changes to core measures language, and with the addition of a few newly available substances. All Newtown youth surveys have been either the Governor’s Prevention Initiative for Youth (GPIY) paper survey (2002, 2005, and 2007), or an on-line adaptation of the same survey using SurveyMonkey.com® (2009, 2011, and 2013). In 2013, random samples of 125 to 177 students per grade in grades 7-12 were surveyed, and results are reported in 2-grade intervals. Since 2009, surveys have been sponsored by the Newtown Prevention Council, a coalition for prevention of youth substance abuse, and by Newtown Public Schools. The surveys in 2011 and 2013 were conducted as part of the evaluation requirement of a Drug-Free Communities grant from the Department of Health and Human Services.

The GPIY survey measures the prevalence of use among Newtown youth of tobacco, alcohol, marijuana, other illicit drugs, and prescription drugs without one’s own prescription. It also collects information related to risks and assets of the community. This report summarizes findings and trends, by tracking data from previous Newtown surveys, and comparing with national results published as *Monitoring the Future, National Results on Adolescent Drug Use* [6] (MTF). Complete summary tables of results are contained in a separate document.

Graphs of lifetime use of cigarettes, alcohol, marijuana and inhalants display prevalence and trends in Newtown and in national MTF statistics. In the graphs, the lines (solid for Newtown, dashed for national) are least-squares linear regression plots, and represent the 12-year trends, 2002 through 2013. National data are published annually for grades 8, 10, and 12, with the most recent report in 2012, whereas Newtown data are reported by combining grades, 7-8, 9-10, and 11-12. Since prevalence of use of all substances almost always increases with grade (i.e., age), prevalences in Newtown in the Graphs 1-4 may appear slightly lower than national, due to inclusion of data from the lower grade. However, trends within Newtown data and slopes of national MTF data provide valid comparisons. One set of figures (Graphs 5) make direct comparisons of prevalences, Newtown 2011 and 2013 vs. MTF 2012, for grades 8, 10, and 12. Table 6 displays prevalences of 30-day use of cigarettes, alcohol and marijuana for grades 8, 10, and 12, for the three years for which Newtown data were available.

### **Prevalence of alcohol, tobacco and drug use among youth**

Trends in the lifetime use of cigarettes by Newtown youth in all grades surveyed are decreasing more rapidly than national prevalences (Graphs 1.1, 2.1, 3.1), continuing a long-term pattern. Alcohol use is also decreasing at rates equal to or greater than MTF rates, and prevalences are considerably less than national among younger youth (Graphs 1.2, 2.2, 5). In grade 12, lifetime drinking prevalence has decreased, and is now only slightly higher than national averages (Graphs 3.2, 5).

Trends in the use of marijuana present a different picture from cigarettes or alcohol. In grades 7-10, there was an uptick in the prevalence of lifetime use in 2013 (Graphs 1.3, 2.3), and 30-day use increased as well. In grades 11-12, the lifetime prevalence of marijuana use in 2013 was 44%, about the same as in 2011 (Graph 3.3). However, the 30-day use of marijuana among youth in grades 11-12 increased from 24% in 2011 to 38% in 2013, and reported use during more than 10 of the previous 30 days increased from 8% in 2011 to 11% in 2013. Thus, although experimentation with marijuana has not changed, among users it appears to have become more chronic and intense. Lifetime marijuana use in grades 8 and 10 in Newtown is much lower than national averages, but is slightly higher in grade 12 (Graph 5).

In 2013, the prevalence of the use of most illicit substances other than marijuana by Newtown youth has remained low, with few changes since 2011 (lifetime use, Table 1). Decreases were reported for sedatives (“downers” like Quaalude) and for abuse of OTC meds, but use of tranquilizers has increased. Some youth have tried synthetic cannabinoids like K2 or Spice, although these substances are no longer legally available.

National and state authorities are concerned about increasing abuse of addictive pain meds (like oxycodone) and stimulants (like Ritalin or Adderall). Abuse of opioid pain meds is leading to opiate addiction and alarming increases in use of heroin (cheaper, more available) in many U.S. communities. Lifetime use of prescription meds of any type was reported by 14% of Newtown youth in grades 11-12. Take-back programs for unused prescriptions are being implemented, to limit their supply. Newtown has a permanent drug drop-box at police headquarters. Coalitions in other states report success in persuading medical authorities to urge doctors to limit prescriptions of addictive pain meds to four pills, not 30 or more as is commonplace. Success usually involves having influential medical professionals as coalition supporters.

Table 1. Lifetime use of illicit drugs, and medicines without own prescription or order.

Substance	Prevalence of any use in lifetime					
	Grades 7-8		Grades 9-10		Grades 11-12	
	% 2011	% 2013	% 2011	% 2013	% 2011	% 2013
Cocaine	1.2	0.6	1.6	1.3	2.6	3.1
Crack (rock)	0.6	0.3	1.3	1.0	0.3	0.0
Hallucinogens (e.g., LSD)	0.6	0.3	1.6	3.0	6.5	5.2
K2 (synthetic cannabinoid)	**	0.0	**	1.0	**	4.3
Spice (syn. cannabinoid)	**	1.2	**	0.7	**	2.4
Bath Salts	**	0.3	**	1.8	**	0.4
Heroin	1.2	0.3	0.6	1.0	0.6	0.4
Angel Dust (PCP)	0.6	0.0	0.3	1.0	0.6	0.4
MDMA (Ecstasy)	0.0	0.6	1.3	1.7	6.0	5.5
Ketamine	0.6	0.0	0.3	1.4	0.9	1.6
GHB	0.0	0.0	0.0	0.0	0.0	0.4
Methamphetamine	0.3	0.3	0.6	1.4	1.0	0.4
Steroids	1.2	1.5	0.3	1.1	1.2	0.0
Downers (e.g., quaaludes)	4.0	2.1	2.9	2.7	6.1	0.8
Tranquilizers	0.6	3.6	0.0	4.5	1.3	5.8
Uppers (stimulants)	1.2	1.2	1.6	1.4	3.6	1.3
OTC meds to get high	6.5	1.2	5.3	3.4	15.6	10.7
Rx meds (e.g., Oxycontin, Adderall, Ritalin, Vicodin)	**	7.9	**	9.9	**	14.4

\*\* Data not available.

## Alcohol use by peers

Responses to the question "How many of your close friends drink beer, wine, wine coolers, or hard liquor?" show relatively constant levels from 2002 to 2009 (Table 2). Decreases in 2011 among peers of youth in grades 9-12 (high school) have continued in 2013. These decreases are consistent with self-reports of decreased drinking by the same youth, noted above.

Table 2.

Year	Drinking by "Most" Close Friends		
	Grades:		
	7-8	9-10	11-12
	%	%	%
2002	1.5	18.9	50.5
2005	3.2	21.4	54.1
2007	1.4	26.2	53.5
2009	1.5	25.3	49.3
2011	3.1	13.5	41.8
2013	1.2	12.6	31.4

## Perceived availability of alcohol

The survey question was asked, “If you wanted to, how easy would it be for you to get beer, wine, wine coolers, or hard liquor?” The percentage answering “very easy” or “sort of easy” increased among all youth between 2007 and 2009 (when the survey format was changed), but has been decreasing or remaining constant in Newtown since 2009 (Graphs 4.1, 4.2, 4.3). Nationally, access has been steadily decreasing among all youth since 2002. Current levels of access in Newtown are similar to national figures.

## Perceived risk of harm from regular alcohol use

The survey asked, “How much do you think people about your age risk harming themselves (physically or in other ways) if they take one or two drinks of an alcoholic beverage (beer, wine, or liquor) every day?” Four levels of response were allowed: none, very little, some, and a lot. Youth in grades 7-12 responded similarly, and there are no consistent trends in perceptions (Table 3). This question is a “core measure”, with lower perception of risk generally correlated with higher prevalence of drinking.

Table 3.

Year	Little or no risk from regular alcohol		
	Grades:		
	7-8	9-10	11-12
	%	%	%
2002	7.2	10.0	13.7
2005	10.5	7.4	9.4
2007	4.7	7.2	9.1
2009	9.9	8.5	9.0
2011	7.4	5.2	6.5
2013	7.6	7.4	7.9

## Family member with alcohol problem

The question was asked, “Has anyone in your family (such as a parent, brother or sister, not including you) ever used alcohol so that it created problems at home, at work, or with friends?” The percentage of “Yes” for youth in grades 11-12 was constant from 2005 to 2011, and decreased in 2013. For other youth, excessive family drinking continued to decrease in 2013 (Table 4).

Table 4.

Year	Alcohol problem in family		
	Grades:		
	7-8	9-10	11-12
	%	%	%
2005	24.0	26.8	30.3
2007	20.2	26.1	28.3
2009	13.5	23.2	24.6
2011	13.2	19.2	27.2
2013	12.8	13.8	19.5

## Age of initiation of substance use

Youth who indicated that they had tried using a substance at some time in their lives were asked at what age they first: (1) smoked a cigarette, (2) tried alcohol, more than just a sip, and (3) used marijuana. Early initiation has been associated with more severe substance problems later in life. The age of first using cigarettes and alcohol has remained constant, but first use of marijuana occurred at an earlier age in 2013 than in previous years, among youth of all ages (Table 5). First use of marijuana reportedly occurred at an earlier age than either alcohol or cigarettes.

Table 5. Average age of initiation, lifetime users.

Substance	Year	Grades:		
		7-8	9-10	11-12
		years	years	years
Cigarettes	2007	11.8	13.0	**
	2009	11.8	13.4	14.5
	2011	*	13.9	15.0
	2013	12.2	13.7	15.0
Alcohol	2007	11.4	13.3	**
	2009	11.8	13.4	14.5
	2011	10.9	13.8	15.0
	2013	11.6	13.8	15.0
Marijuana	2007	12.0	14.1	**
	2009	11.8	13.4	14.5
	2011	*	14.0	14.8
	2013	11.0	12.6	13.9

\* Too few to calculate statistic. \*\* Data not available.

## Cohort comparisons

Table 6 was prepared to allow tracking of individual groups of youth, and for comparisons: youth of the same ages in different years; genders; and each of the three substances. An authentic cohort analysis requires following the same individuals over time. But because of anonymity requirements, this analysis uses random samples from each group, not necessarily the same individuals, and there can be no correction for entry and exit of students to/from the district.

One group with consistently lower prevalences for use of all 3 substances were girls who were in grade 8 in 2009 and grade 10 in 2011. However, reported prevalences in this group rebounded in 2013. Similar patterns were not seen with their male classmates. The progressive decrease in cigarette smoking by grade 12 boys, 2009 to 2013, can be seen clearly. By 2013, prevalence of 30-day use of marijuana exceeded cigarette smoking by more than 4-fold among boys, and more than 2-fold among girls.

Table 6. Prevalence of 30-Day Use

Substance	Year of Survey	Grade	Prevalence by Gender	
			Female	Male
Cigarettes	2009	8	2.3	3.5
		8	3.5	1.4
		8	2.6	0.0
	2011	10	5.2	5.7
		10	1.6	7.1
		10	7.7	5.3
	2013	12	22.5	33.3
		12	10.2	18.6
		12	14.0	11.9
Alcohol	2009	8	4.6	12.6
		8	9.4	2.9
		8	5.3	3.6
	2011	10	32.8	25.0
		10	17.7	22.9
		10	21.8	25.3
	2013	12	67.6	46.2
		12	44.3	48.8
		12	44.6	44.0
Marijuana	2009	8	0.0	3.5
		8	4.7	2.9
		8	2.7	3.7
	2011	10	12.1	20.9
		10	9.7	18.1
		10	15.8	20.3
	2013	12	22.9	30.8
		12	25.6	27.1
		12	32.1	48.1



## Community and School Safety

All the Newtown youth surveys have included a few questions about how relative safety is perceived. Agreement or disagreement with two key safety questions showed no marked effects, comparing 2013 with 2009 and 2011 (Table 7). The surveys also included a battery of 18 self-concept questions, asking about both negative and positive feelings. The average scores of six questions related to mild depression were compared across the three years. It appeared that agreement with these questions may have increased in 2013, signaling a possible increase in mild depressive feelings. A more thorough analysis was carried out, using factor analysis. Factor analysis identifies groups of questions to which similar answers are given by many respondents. Self-concept data separated into 3 factors, related to: negative or depressive feelings, positive feelings, and mild hyperactivity. Three factor scores were calculated, as the degree to which each respondent was associated with each factor. Three analyses of variance were performed, with each of the three factors as dependent variable, and with predictor variables of year, grade, and the year-by-grade interaction. Both the survey year nor the interaction term were not significantly ( $p >> 0.10$ ) related to any of the factors, but grade was. Thus, statistical evidence is lacking that self-concept was more negative in 2013 than in 2009 or 2011.

Table 7.

Agree or Strongly Agree with the statements:	Year	Grades		
		7-8	9-10	11-12
I feel safe at school	2009	87.3	87.5	90.2
	2011	90.0	88.2	91.9
	2013	89.6	92.5	91.9
My community is a safe place	2009	84.0	82.1	91.1
	2011	86.0	81.5	88.7
	2013	87.7	87.7	88.7
Feelings of depression or loneliness*	2009	14.7	18.2	17.6
	2011	19.4	16.5	21.9
	2013	23.2	22.8	25.3

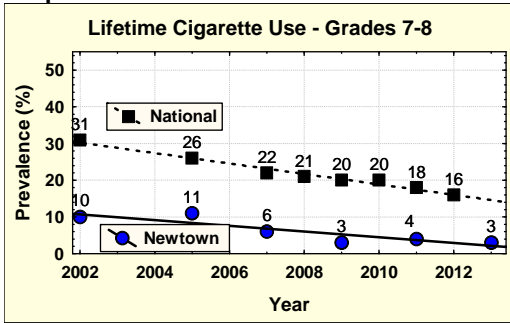
\* Averages of "strongly agree" plus "agree" with the following statements:

- I feel no one understands me.
- At times, I think I am no good at all.
- I feel lonely.
- I feel no one really cares about me.
- I feel I do not have much to be proud of.
- I feel sad most of the time.

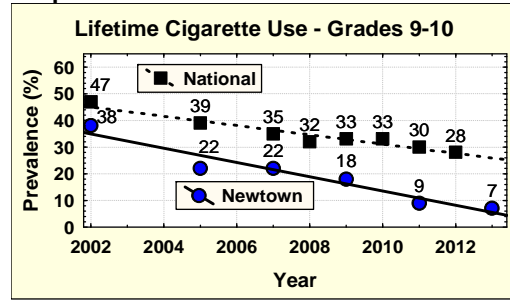
## REFERENCES

1. Ungemack, J.A., M. Sienna and J. Sussman (May 2, 2003). Governor's Prevention Initiative for Youth Student Survey, 2002: Newtown. Administered April, 2002.
2. Regan, M., and A. Jackson (January 12, 2006). Governor's Prevention Initiative for Youth. Newtown Student Survey Results. Administered April, 2005.
3. Regan, M., A. Jackson, L. Gejda, and J. Blanchard. Governor's Prevention Initiative for Youth. Newtown Student Survey Results. Administered April, 2007.
4. Swindell, AC, and C Miskell (October 20, 2009). 2009 Youth Survey Summary Report, Newtown, Connecticut. Administered April, 2009.
5. Swindell, AC (September 9, 2011). 2011 Youth Survey Summary Report, Newtown, Connecticut. Administered April, 2011.
6. University of Michigan. (December, 2012). "Monitoring The Future, a continuing study of American youth." <http://www.monitoringthefuture.org>, <http://www.monitoringthefuture.org/data/data.html>
7. U.S. Department of Health & Human Services. Office for Civil Rights – HIPAA. Medical Privacy – National Standards to Protect the Privacy of Personal Health Information. <http://www.hhs.gov/ocr/hipaa/privacy.html>
8. U.S. Department of Education. Family Educational Rights and Privacy Act (FERPA): <http://www.ed.gov/policy/gen/guid/fpco/ferpa/index.html>

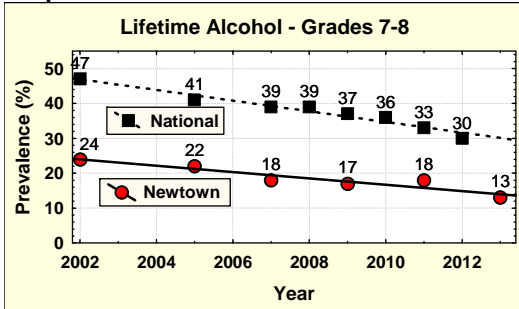
Graph 1.1



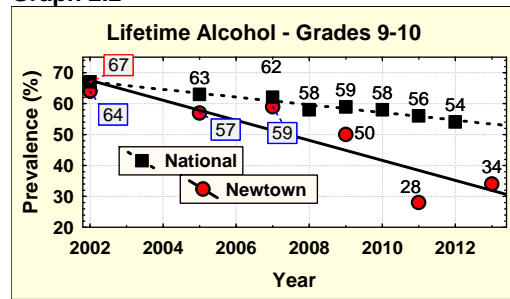
Graph 2.1



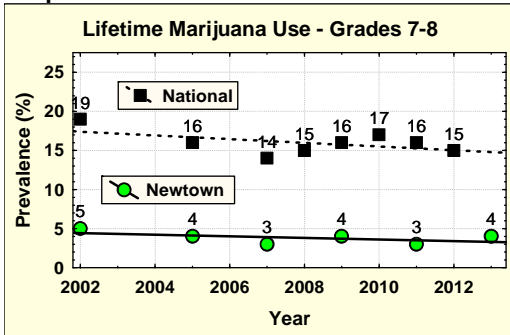
Graph 1.2



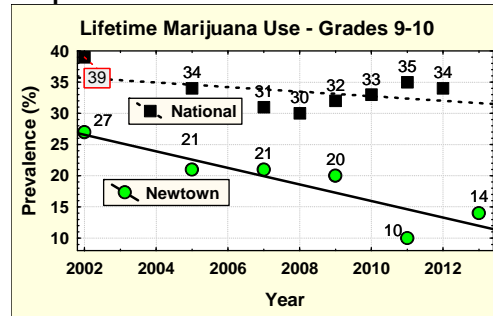
Graph 2.2



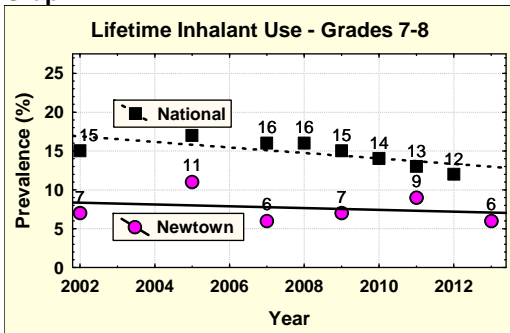
Graph 1.3



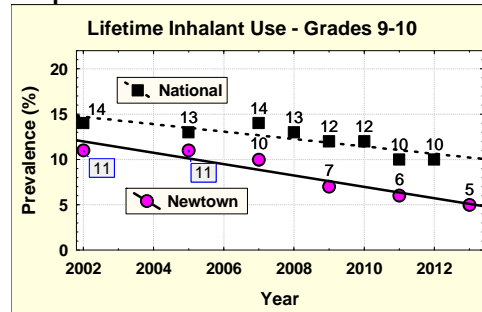
Graph 2.3



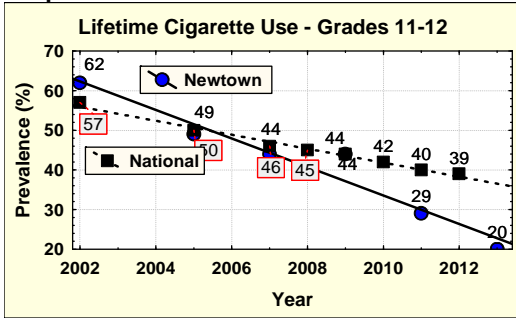
Graph 1.4



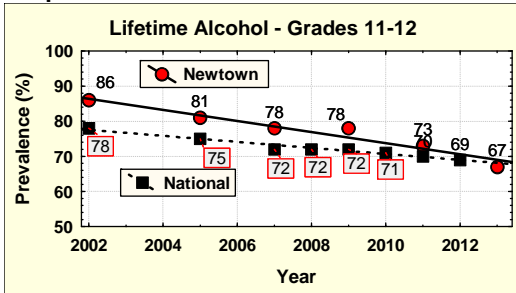
Graph 2.4



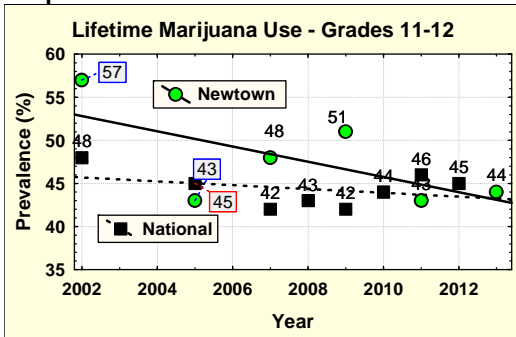
**Graph 3.1**



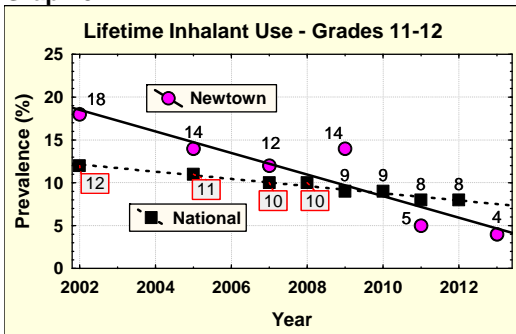
**Graph 3.2**



**Graph 3.3**



**Graph 3.4**

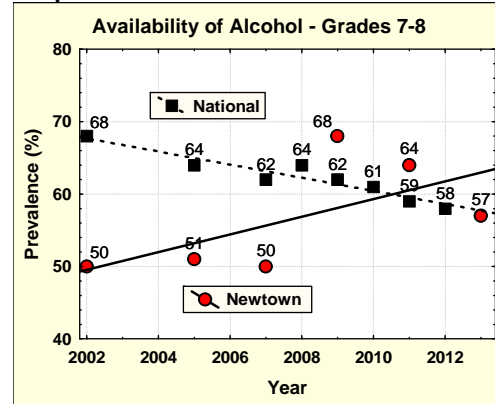


**Graph 4.**

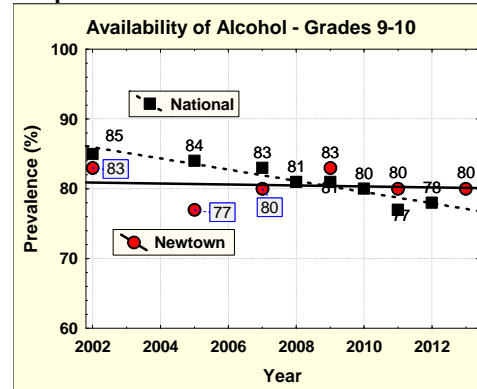
**Availability of Alcoholic Beverages**

Q: If you wanted to, how easy would it be for you to get alcoholic beverages?  
A: Very Easy OR Sort Of Easy

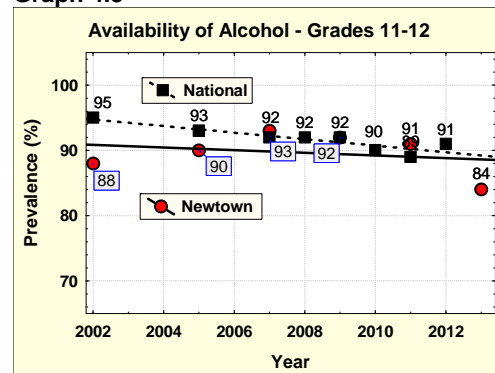
**Graph 4.1**



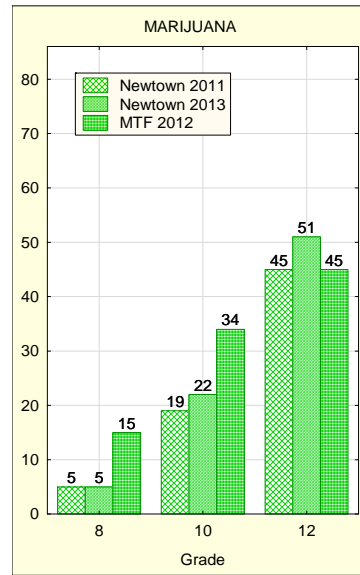
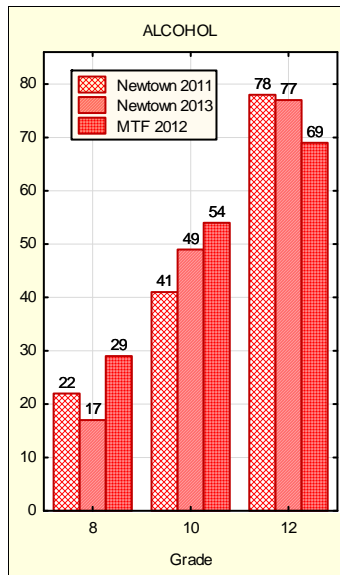
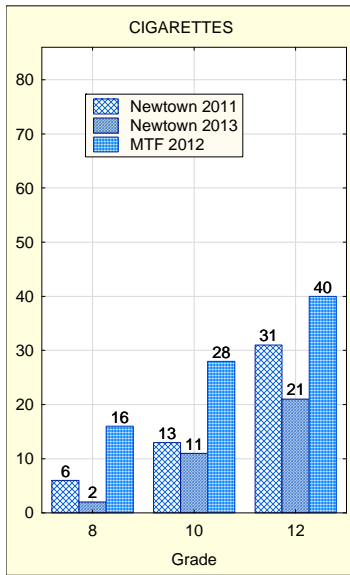
**Graph 4.2**



**Graph 4.3**



**Graph 5.**  
**Lifetime Use (% Prevalence vs. Grade)**



**2013 Youth Survey  
Newtown, Connecticut**

**Summary Data on Alcohol, Tobacco, and Drug Use**

**August 5, 2013**

Data are based on the Substance Abuse Prevention surveys conducted by Newtown Public Schools, most recently in April, 2013.

## *SECTION 1. DEMOGRAPHY*

**Table 1. Numbers of students in grades surveyed - 2013**

Grade	Surveyed	Analyzed	Weight
	count	count	
6	2	0	0
7	177	170	0.867
8	164	160	0.921
9	145	140	1.052
10	157	155	0.951
11	125	118	1.249
12	143	141	1.045
Totals	913	884	1.000

**Table 2. Gender and grade of students analyzed - 2013**

Grade	Gender		
	Female	Male	Missing
	count	count	count
7	80	88	2
8	76	83	1
9	64	71	6
10	78	75	2
11	61	55	2
12	57	84	0
Missing	0	0	0
Totals	416	457	13

**Table 3. Race, ethnicity of students included in the analysis**

Grade	Survey Sample		Newtown Schools*
	count	%	%
White/Caucasian	790	89.3	92.0
Black/African American	18	2.0	1.3
Hispanic	30	3.4	3.2
Asian	35	4.0	3.4
Native American	5	0.6	0.1
Other	2	0.2	--
Missing	5	0.6	--
Totals	885	100.0	100.0

\* Reference: <http://sdeportal.ct.gov/Cedar/WEB/ResearchandReports/SSPReports.aspx>, 2009-2010, regular students



## *SECTION 2. TOBACCO, ALCOHOL, AND DRUG USE*

**Table 4. Recent (past 30 days) use of substances by gender, grade**

Substance	Gender	Grade / Year								
		Grade 7-8			Grade 9-10			Grade 11-12		
		2009	2011	2013	2009	2011	2013	2009	2011	2013
Alcohol	Female	%	%	%	%	%	%	%	%	%
	Male	4.2	6.2	3.9	26.1	14.3	15.3	59.4	37.3	31.4
	Both	9.2	2.6	4.1	25.6	16.6	19.9	46.4	49.1	38.8
Cigarettes	Female	6.7	4.9	4.6	26.7	12.1	16.5	53.1	45.3	37.2
	Male	2.4	1.8	1.3	4.5	3.6	4.8	20.4	11.1	13.5
	Both	2.9	1.3	1.2	6.7	4.8	5.5	26.1	17.6	11.5
Other Tobacco	Female	2.6	1.6	1.6	6.2	5.0	4.3	23.2	15.6	12.3
	Male	1.8	0.6	0.6	3.7	2.1	2.1	13.8	6.5	6.9
	Both	4.0	2.6	1.8	15.0	6.0	9.6	39.9	33.5	21.6
Marijuana	Female	2.9	1.7	1.2	10.3	4.3	4.2	26.7	22.1	14.4
	Male	0.0	2.5	2.0	7.5	6.4	10.5	24.8	19.2	29.1
	Both	2.9	1.3	2.4	14.4	12.1	14.6	33.1	28.6	45.6
Inhalants	Female	1.5	2.1	2.2	11.0	7.0	11.0	28.8	23.7	37.3
	Male	1.8	1.8	0.6	0.0	1.4	0.0	0.0	0.7	0.0
	Both	0.6	1.9	1.2	1.5	0.6	0.7	0.7	1.2	0.0
Illicit Drugs	Female	1.2	2.1	1.1	0.7	1.1	0.7	0.4	1.0	0.0
	Male	0.0	0.0	0.6	1.5	1.4	2.1	2.9	1.3	4.6
	Both	0.0	0.0	0.6	0.8	1.2	5.0	3.7	4.8	3.0
Illicit Drugs	Female	0.0	0.0	0.7	1.1	1.7	3.8	3.3	2.9	3.1
	Male	0.0	0.0	0.6	0.8	1.2	5.0	3.7	4.8	3.0
	Both	0.0	0.0	0.7	1.1	1.7	3.8	3.3	2.9	3.1

**Table 5. Lifetime use of substances by gender, grade**

Substance	Gender	Grade / Year								
		Grade 7-8			Grade 9-10			Grade 11-12		
		2009	2011	2013	2009	2011	2013	2009	2011	2013
		%	%	%	%	%	%	%	%	%
Alcohol	Female	9	16.2	10.0	46.3	23.6	28.8	80.4	64.9	61.2
	Male	24.3	20.0	15.2	51.9	33.4	38.1	74.6	79.6	71.6
	Both	16.7	18.4	12.9	49.8	28.5	34.2	77.6	72.7	66.6
Cigarettes	Female	2.4	4.1	2.8	14.9	9.6	5.5	46.7	20.6	19.3
	Male	4.1	3.5	2.6	20.0	8.1	8.9	41.3	36.7	19.9
	Both	3.2	3.7	2.7	18.2	8.7	6.9	44.2	28.9	19.7
Other Tobacco	Female	6.6	1.4	0.9	10.4	4.2	5.8	27.5	19.4	18.2
	Male	7.5	8.2	8.7	25.6	10.3	13.8	53.6	53.9	41.4
	Both	7	4.6	5.0	18.7	7.4	10.1	40.4	37.7	30.8
Marijuana	Female	1.8	3.5	4.0	12.7	8.1	11.4	51.8	34.2	39.5
	Male	5.9	2.9	3.5	24.2	12.4	15.6	49.3	50.0	48.5
	Both	3.8	3.2	3.7	19.5	10.3	13.7	50.7	42.7	44.3
Inhalants	Female	6.7	10.0	8.0	7.5	6.8	3.2	12.4	4.4	2.6
	Male	7	8.0	5.1	6.9	4.4	6.1	14.9	5.7	5.9
	Both	6.8	8.9	6.4	7.0	5.5	4.5	13.6	5.1	4.3
Other Illicit Drugs	Female	1.8	2.7	4.9	2.3	4.0	2.7	11.7	5.0	6.6
	Male	1.2	3.6	2.6	6.1	3.1	5.6	17.0	13.2	9.7
	Both	1.5	3.1	3.7	4.4	3.5	3.9	14.3	9.3	8.3

**Table 6. Recent use of substances by race, ethnicity**

Substance	Race/Ethnicity			
	White/ Caucasian	Black/ African Amer.	Hispanic/ Latino	Asian/ Pacific Islander
	%	%	%	%
Alcohol	13.8	19.0	23.9	28.3
Cigarettes	7.6	12.1	4.8	7.3
Other Tobacco	1.0	0.0	9.0	21.0
Marijuana	7.6	12.3	21.5	29.3
Inhalants	0.0	0.0	0.0	0.0
Other Illicit Drugs	8.2	3.8	0.0	0.0

**Table 7. Association of recent alcohol with recent use of other substances**

Other Substance Reportedly Used	Gender	30-Day User of <b>Alcohol</b>						User to Non-User Ratio		
		Non-Users			Users			2009	2011	2013
		2009	2011	2013	2009	2011	2013			
		%	%	%	%	%	%			
Cigarettes	Female	3.5	1.1	3.8	22.0	24.1	19.8	6.3	22.2	5.2
	Male	2.1	1.3	2.6	37.4	30.4	19.3	17.6	24.1	7.4
	Both	2.8	1.2	3.2	29.7	27.3	19.5	10.6	23.2	6.1
Marijuana	Female	1.9	1.8	6.4	30.9	40.8	49.9	16.3	22.4	7.8
	Male	3.4	5.4	9.6	53.2	43.4	64.6	15.8	8.1	6.7
	Both	2.6	3.6	8.0	42.0	42.1	57.3	16.0	11.7	7.1
Inhalants	Female	1.0	0.8	0.3	0.0	3.6	0.0	0.0	4.4	0.0
	Male	0.3	0.8	0.8	2.7	2.8	0.0	8.7	3.4	0.0
	Both	0.6	0.8	0.5	1.3	3.2	0.0	2.1	3.9	0.0
Other Illicit Drugs	Female	0.3	0.2	1.0	4.1	3.6	9.6	12.7	14.8	9.8
	Male	0.0	0.0	1.1	5.4	8.3	9.1	--	--	8.3
	Both	0.2	0.1	1.0	4.7	5.9	9.4	29.5	48.8	9.0

**Table 8. Association of recent marijuana with recent use of other substances**

Other Substance Reportedly Used Recently	Gender	30-Day User of <b>Marijuana</b>						User to Non-User Ratio		
		Non-Users			Users			2009	2011	2013
		2009	2011	2013	2009	2011	2013			
		%	%	%	%	%	%			
Alcohol	Female	21.5	11.9	9.6	86.4	83.4	60.7	4.0	7.0	6.3
	Male	14.1	15.2	9.1	84.3	70.7	63.3	6.0	4.7	6.9
	Both	17.8	13.6	9.4	85.3	77.1	62.0	4.8	5.7	6.6
Cigarettes	Female	4.1	1.9	2.7	48.8	40.6	29.4	12.1	21.0	11.0
	Male	4.3	2.8	1.8	45.7	37.8	22.9	10.5	13.5	13.1
	Both	4.2	2.4	2.2	47.3	39.2	26.2	11.3	16.6	11.8
Inhalants	Female	0.8	1.0	0.2	0.0	5.0	0.0	0.0	5.2	0.0
	Male	0.5	1.0	0.5	2.9	2.9	1.1	5.2	3.1	2.2
	Both	0.7	1.0	0.4	1.4	4.0	0.6	2.2	4.1	1.5
Other Illicit Drugs	Female	0.3	0.2	0.3	11.4	7.2	15.7	44.5	30.3	52.7
	Male	0.0	0.5	0.8	8.6	11.7	10.1	--	25.1	12.8
	Both	0.1	0.4	0.5	10.0	9.4	12.9	78.1	26.8	23.8

**Table 9. Tobacco Use**

Questions & Responses	Grade / Year														
	Grade 7-8					Grade 9-10					Grade 11-12				
	2005	2007	2009	2011	2013	2005	2007	2009	2011	2013	2005	2007	2009	2011	2013
	%	%	%	%	%	%	%	%	%	%	%	%	%	%	%
Have you ever smoked a cigarette (more than just a puff)?															
Yes	11.1	6.0	3.2	3.4	2.1	22.4	22.7	18.2	9.3	8.0	49.4	49.4	44.2	30.5	20.8
On how many occasions have you smoked cigarettes?															
1-5 occasions	**	**	*	2.4	*	**	**	11.5	6.2	0.0	**	**	17.8	13.3	**
6-10 occasions	**	**	*	1	*	**	**	*	0.3	*	**	**	4	4.3	**
More than 10 occasions	**	**	1.8	0	0.0	**	**	5.9	2.8	0.0	**	**	22.5	12.8	**
How many days did you smoke cigarettes in the past 30 days?															
1-5 days	2	1.7	*	1	*	4.5	7.7	3	1.5	3.5	8.4	14.9	9.4	7.4	6.5
6 or more days	*	*	1.8	0.3	0.7	3	2	3.4	2.5	1.0	13.9	9.8	14.1	7.2	4.7
In the past 30 days, on the days you smoked, how many cigarettes?															
Less than 5 cigarettes/day	1.8	1.7	2.1	1.4	0.8	5.6	6.5	6.1	3.6	4.5	15.3	17.5	16.6	10.9	10.0
Up to 1/2 pack per day	**	**	*	0	*	**	**	*	0.3	*	**	**	3.3	2.2	1.1
More than 1/2 pack per day	*	*	*	0	*	*	*	*	0	*	5.8	5.8	3.7	1.5	0.0

\* Less than 1%

\*\* Data not collected.

**Table 10. Non-Cigarette Tobacco Use**

Substance	Grade / Year								
	Grade 7-8			Grade 9-10			Grade 11-12		
	2009	2011	2013	2009	2011	2013	2009	2011	2013
	%	%	%	%	%	%	%	%	%
Have you used a non-cigarette tobacco product?									
Yes, in my lifetime	7.0	4.3	4.9	18.7	7.9	11.9	40.4	37.4	29.8
Yes, in the past 30 days	2.9	1.7	1.2	10.3	4.3	5.7	26.7	22.1	14.3
On how many occasions in your lifetime have you used non-cigarette tobacco?									
1-2 occasions	4.1	3.1	2.7	8.1	4.9	5.9	13.4	12.6	12.3
3-10 occasions	0.6	0.6	0.6	3.7	1.0	3.0	10.1	9.6	9.0
More than 10 occasions	2.3	0.6	1.5	7.0	2.0	2.9	16.6	15.2	8.5
In the past 30 days, I have used:									
Smokeless tobacco	1.8	0.6	0.6	5.5	2.9	1.0	10.8	13.3	5.1
Cigars or cigarillos	1.8	1.2	1.2	6.2	2.3	4.7	20.0	13.4	11.3
Pipe (tobacco)	0.0	0.3	0.9	1.5	0.6	2.3	5.1	3.1	1.9

**Table 11. Mean age of initiation for specific behaviors, lifetime users - 2013**

Substance	Age	Statistic	Grade					
			7	8	9	10	11	12
All youth	At time of survey	Average Age	12.5	13.4	14.5	15.4	16.4	17.3
		N	170	160	141	155	118	141
Alcohol	At time of first use	Average Age	10.9	12.3	13.3	14.2	14.5	15.4
		N	15	25	29	74	61	107
Cigarettes	At time of first use	Average Age	11.0	13.3	13.4	14.1	14.4	15.6
		N	6	4	7	17	24	31
Marijuana	At time of first use	Average Age	10.0	12.0	12.0	13.1	13.5	14.3
		N	6	7	12	34	43	70

**Table 12. Alcohol Use**

Questions & Responses	Grade / Year														
	Grade 7-8					Grade 9-10					Grade 11-12				
	2005	2007	2009	2011	2013	2005	2007	2009	2011	2013	2005	2007	2009	2011	2013
	%	%	%	%	%	%	%	%	%	%	%	%	%	%	%
Have you ever had an alcoholic beverage (more than a few sips)?															
Yes, in my lifetime	21.8	18.1	16.7	18	12.6	56.6	58.9	49.8	33	35.6	81.3	77.5	77.6	72.6	64.1
Yes, in the past 30 days	9.4	7.5	6.7	4.9	4.6	29.8	34.6	26.7	12.1	16.5	56.7	63.8	53.1	45.3	37.2
How many occasions have you had alcohol to drink in your lifetime?															
1-5 occasions	18.7	14.5	11.2	11.3	9.8	32.3	30.7	17.5	18.3	19.4	25.1	20.8	17	20.8	24.3
6 or more occasions	5.5	3.7	5.5	6.7	2.7	25.8	27.8	32.3	14.7	16.1	55.1	57.2	60.6	51.9	39.9
In the past 30 days, how many days did you drink alcohol?															
1-5 days	6.6	6.6	6.7	3.7	3.6	24.7	26.5	22.7	14.1	13.8	42.3	47.5	41.0	36.2	28.5
6 or more days	2.8	*	*	0.6	0.0	5.1	8.1	4.0	1.0	3.0	14.4	16.3	12.3	7.2	6.6
In the past 30 days, on the days you drank, how many drinks did you usually have?															
1 Drink or Less	2.1	3.9	3.8	2.9	0.0	10.5	10.1	9.8	5.6	8.0	6.0	11.1	9.8	7.3	8.8
2-3 Drinks	3.6	2.3	1.3	0.9	0.0	9.7	12.2	14.4	5.2	9.9	15.6	17.8	15.5	11.6	18.4
More Than 3 Drinks	2.3	*	*	0.6	0.0	12	11.1	12.3	4.3	5.7	32.3	34	40.8	24.6	26.3
On how many occasions have you been drunk or very high from drinking alcohol?															
0 occasions	91.1	96	95.5	72.8	96.6	70.2	65.6	60.9	55.5	80.4	38.3	36.4	22.4	25.5	57.5
1-2 occasions	4.8	2.9	2.7	22.1	1.9	12.7	16.8	12.8	24.1	8.6	14.8	17.4	10.6	18.5	10.7
3-9 occasions	3.7	1.6	1.2	1.7	0.9	10.6	11.7	7.3	6.5	5.4	17.2	18.2	14.9	21.6	12.2
10 or more occasions	*	*	*	3.4	0.6	6.5	5.8	11.4	13.9	5.6	29.6	28.1	35.3	34.4	19.6

\* Less than 1%

**Table 13. Marijuana Use**

Questions & Responses	Grade / Year														
	Grade 7-8					Grade 9-10					Grade 11-12				
	2005	2007	2009	2011	2013	2005	2007	2009	2011	2013	2005	2007	2009	2011	2013
	%	%	%	%	%	%	%	%	%	%	%	%	%	%	%
Have you ever used marijuana?															
Yes, in my lifetime	4.5	3.0	3.8	2.8	3.1	21.0	21.4	19.5	12.6	15.5	43.4	47.8	50.7	43.3	43.9
Yes, in the past 30 days	**	**	1.5	1.8	2.2	**	**	11.0	9.6	12.4	**	**	28.8	23.9	37.9
How many occasions have you used marijuana?															
1-2 Occasions	**	**	2.6	0.3	1.7	**	**	6.3	2.3	2.3	**	**	9.9	6.4	7.4
3-5 Occasions	**	**	*	0.9	0.5	**	**	2.2	2.0	3.3	**	**	8.4	2.9	3.9
6-10 Occasions	**	**	*	0.0	0.0	**	**	1.5	1.0	1.0	**	**	6.2	5.4	2.3
More Than 10 occasions	**	**	1.0	1.6	0.9	**	**	9.6	7.3	9.0	**	**	26.3	28.7	30.3
In the past 30 days, on how many days did you use marijuana?															
1-2 days	2.8	1	1	0.6	0.7	6.3	6.3	5.9	5.9	3.0	9.3	10.2	12	9.7	6.0
3-5 days	**	**	*	0.6	0.4	**	**	1.5	1.7	3.0	**	**	5.5	4.4	6.6
6-10 days	**	**	*	0	0.0	**	**	*	0.3	2.7	**	**	2.2	2.1	2.7
more than 10 days	**	**	*	0.6	0.6	**	**	3.3	1.7	1.3	**	**	9.1	7.7	11.0

\* Less than 1%. \*\* Data not available.

**Table 14. Lifetime Drug Use**

Substance	Grade / Year														
	Grade 7-8					Grade 9-10					Grade 11-12				
	2005	2007	2009	2011	2013	2005	2007	2009	2011	2013	2005	2007	2009	2011	2013
	%					%					%				
<u>I have used these drugs at some time in my life</u>															
Inhalants	11.2	6.4	6.8	8.4	5.5	11.1	9.7	7.0	4.8	4.5	13.9	12.0	13.6	5.7	3.9
Cocaine	*	*	*	1.2	0.6	1.8	1.3	1.1	1.6	1.3	7.1	6.2	5.9	2.6	3.1
Crack (rock)	1.7	*	*	0.6	0.3	1.1		*	1.3	1.0	1.5	2.2	1.1	0.3	0.0
Methamphetamine	**	**	*	0.3	0.3	**	**	3.7	0.6	1.4	**	**	11.7	1.0	0.4
Hallucinogens (LSD, acid)	1.7	*	*	0.6	0.3	2.6	2.0	*	1.6	3.0	9.5	5.4	1.8	6.5	5.2
Synthetic cannabinoid (K2)	**	**	**	**	0.0	**	**	**	**	1.0	**	**	**	**	4.3
Synthetic cannabinoid (Spice)	**	**	**	**	1.2	**	**	**	**	0.7	**	**	**	**	2.4
Bath Salts	**	**	**	**	0.3	**	**	**	**	1.8	**	**	**	**	0.4
Heroin	*	*	*	1.2	0.3	1.1		*	0.6	1.0	1.5	1.5	1.5	0.6	0.4
Angel Dust (PCP)	1.0	*	*	0.6	0.0	1.1	1.0	*	0.3	1.0	3.8	1.8	2.2	0.6	0.4
MDMA (Ecstasy)	1.1	*	*	0.0	0.6	2.2	1.3	1.9	1.3	1.7	6.8	5.4	7.3	6.0	5.5
Ketamine	*	**	*	0.6	0.0	*	**	*	0.3	1.4	**	**	2.6	0.9	1.6
GHB	**	**	*	0.0	0.0	**	**	*	0.0	0.0	**	**	1.1	0.0	0.4
Any Illicit Drug	--	--	--	--	3.0	--	--	--	--	3.7	--	--	--	--	8.7
<u>I have used these drugs or medicines on my own without a prescription or a doctor or dentist telling me to.</u>															
Steroids	*	1.7	1.5	1.2	1.5	1.1	*	*	0.3	1.1	1.5	1.1	1.5	1.2	0.0
Downers (Barbiturates, Sleeping Pills, Quaaludes)	4.9	5.7	3.0	4.0	2.1	11.8	7.8	5.9	2.9	2.7	11.4	13.4	9.9	6.1	0.8
Tranquilizers	1.0	*	*	0.6	3.6	3.0	1.3	1.1	0.0	4.5	8.4	3.3	3.3	1.3	5.8
Uppers (Stimulants, like Adderall, Ritalin)	1.8	1.0	*	1.2	1.2	5.2	2.3	3.3	1.6	1.4	10.6	5.1	7.4	3.6	1.3
Pain meds (like OxyContin, Vicodin)	7.3	6.4	2.7	6.5	4.8	13.0	8.7	5.6	5.5	5.4	17.9	11.3	9.5	5.4	8.3
OTC Meds to Get High (like cough med)	**	**	4.5	6.5	1.2	**	**	6.3	5.3	3.4	**	**	16.1	15.6	10.7
Any Prescription Med without own prescription	--	--	--	--	7.9	--	--	--	--	9.9	--	--	--	--	14.4

\* Less than 1%

\*\* Data not collected or not available.



**Table 15. Recent Drug Use, past 30 days**

Substance	Grade / Year														
	Grade 7-8					Grade 9-10					Grade 11-12				
	2005	2007	2009	2011	2013	2005	2007	2009	2011	2013	2005	2007	2009	2011	2013
	%					%					%				
<u>I have used these drugs at some time in the past 30 days.</u>															
Inhalants	7.9	4.1	1.2	1.9	0.9	4.2	3.4	*	0.9	0.4	2.5	2.9	*	1.0	0.0
Cocaine	*	*	*	0.0	0.0	*	*	*	0.7	0.3	3.4	1.9	1.8	1.0	1.6
Crack (rock)	*	*	*	0.0	0.0	*	*	*	0.3	0.7	*	*	*	0.0	0.0
Methamphetamine	**	**	**	0.0	0.0	**	**	**	0.3	0.7	**	**	**	0.3	0.0
Hallucinogens (LSD, acid)	1.9	*	*	0.0	0.3	1.7	*	*	0.7	2.3	5.4	1.5	*	1.3	0.0
Synthetic cannabinoid (K2)	**	**	**	**	0.0	**	**	**	**	0.0	**	**	**	**	0.8
Synthetic cannabinoid (Spice)	**	**	**	**	0.3	**	**	**	**	0.0	**	**	**	**	0.8
Bath Salts	**	**	**	**	0.0	**	**	**	**	1.4	**	**	**	**	0.0
Heroin	*	*	*	0.0	0.0	*	*	*	0.3	0.7	*	*	*	0.3	0.0
Angel Dust (PCP)	*	*	*	0.0	0.0	*	*	*	0.0	0.7	1.6	*	*	0.0	0.0
MDMA (Ecstasy)	*	*	*	0.0	0.3	1.7	*	1.1	0.3	1.0	2.3	*	2.2	1.9	2.4
Ketamine	**	**	*	0.0	0.0	**	*	*	0.3	0.7	**	*	*	0.0	0.4
GHB	**	**	*	0.0	0.0	**	*	*	0.0	0.0	**	*	*	0.0	0.0
Any Illicit Drug	--	--	--	--	0.6	--	--	--	--	3.4	--	--	--	--	3.6
<u>I have used these drugs or medicines on my own without a prescription or a doctor or dentist telling me to.</u>															
Steroids	**	**	*	0.3	0.6	**	**	*	0.3	1.1	**	**	*	0.0	0.0
Downers (Barbiturates, Sleeping Pills, Quaaludes)	**	**	*	0.6	0.9	**	**	2.2	1.0	1.0	**	**	2.9	1.3	0.0
Tranquilizers	**	**	*	0.3	1.8	**	**	*	0.0	1.4	**	**	1.1	0.0	0.8
Uppers (Stimulants like Adderall, Ritalin)	**	**	*	0.3	0.3	**	**	1.5	0.7	1.4	**	**	1.5	1.4	0.0
Pain meds (like OxyContin, Vicodin)	**	**	*	1.6	0.9	**	**	1.5	1.3	1.4	**	**	1.8	0.6	3.1
OTC Meds to Get High (like cough med)	**	**	*	0.9	2.4	**	**	2.6	0.7	1.8	**	**	6.6	4.1	2.3
Any Prescription Med Without own prescription	--	--	--	--	3.6	--	--	--	--	3.4	--	--	--	--	3.5

\* Less than 1%

\*\* Data not collected or not available.

**Table 16. Reasons for using substances – 2013, 2011, 2009**

Thinking of people about your age who [drink/smoke/use marijuana], how important do you think the following reasons were for them to begin using [each substance]?

**Table 16-1. Alcohol - 2013**

Reason	Importance	Grades / Lifetime user: NO			Grades / Lifetime user: YES		
		7-8	9-10	11-12	7-8	9-10	11-12
		%	%	%	%	%	%
Fit in with friends	Very	57.4	62.6	61.9	16.7	38.8	33.1
	Somewhat	20.7	23.5	33.0	33.3	30.3	44.2
	Not very	22.0	13.9	5.1	50.0	30.9	22.8
Parents or others in family drink	Very	31.6	30.1	20.3	33.3	14.5	13.1
	Somewhat	41.3	49.0	56.2	25.3	50.7	36.7
	Not very	27.1	21.0	23.5	41.4	34.9	50.2
Readily available	Very	31.2	40.0	28.2	24.7	46.7	21.8
	Somewhat	34.5	42.3	47.7	16.7	34.7	44.6
	Not very	34.2	17.6	24.1	58.6	18.6	33.6
Family tradition for special occasions	Very	22.5	19.3	12.6	41.4	20.6	7.7
	Somewhat	43.5	43.9	55.3	33.3	50.3	48.6
	Not very	34.0	36.8	32.1	25.3	29.1	43.8
Personal choice	Very	39.7	48.5	40.6	40.9	58.6	50.2
	Somewhat	36.0	37.8	48.0	50.5	28.9	41.7
	Not very	24.3	13.7	11.4	8.6	12.5	8.1
Boredom	Very	18.4	30.8	41.0	25.3	32.7	35.7
	Somewhat	30.8	46.7	45.8	25.3	46.7	43.6
	Not very	50.8	22.5	13.2	49.5	20.6	20.8
Relieve stress	Very	46.6	45.8	41.9	41.9	30.9	29.8
	Somewhat	31.5	39.0	43.3	16.7	46.5	45.8
	Not very	21.9	15.2	14.8	41.4	22.6	24.4
Curiosity	Very	36.5	43.5	48.6	8.8	50.1	31.5
	Somewhat	42.2	42.7	38.9	54.9	41.9	44.5
	Not very	21.2	13.8	12.5	36.3	8.0	24.0
To have fun	Very	46.7	58.7	75.6	33.3	68.0	75.6
	Somewhat	30.5	30.9	22.3	41.9	23.9	17.7
	Not very	22.8	10.4	2.0	24.7	8.2	6.6
Not sure why	Very	20.4	22.1	20.2	16.7	16.8	12.9
	Somewhat	30.1	41.7	47.0	50.5	39.8	45.2
	Not very	49.5	36.2	32.8	32.8	43.4	41.9

**Table 16-2. Marijuana - 2013**

Reason	Importance	Grades / Lifetime user: NO			Grades / Lifetime user: YES		
		7-8	9-10	11-12	7-8	9-10	11-12
		%	%	%	%	%	%
Fit in with friends	Very	61.6	62.2	56.4	*	57.2	57.9
	Somewhat	20.4	27.5	35.1	*	34.2	29.9
	Not very	18.0	10.3	8.5	*	8.6	12.2
Adults they know use marijuana	Very	29.5	20.3	16.8	*	17.5	17.7
	Somewhat	38.4	37.7	33.3	*	45.5	38.7
	Not very	32.0	42.0	49.9	*	36.9	43.6
Readily available	Very	28.9	43.9	46.3	*	42.5	44.9
	Somewhat	34.6	39.2	41.1	*	34.2	41.1
	Not very	36.5	16.9	12.6	*	23.4	13.9
Personal choice	Very	46.9	55.0	61.0	*	51.1	65.3
	Somewhat	36.9	35.6	34.9	*	40.0	32.8
	Not very	16.1	9.3	4.1	*	8.9	1.9
Fits chosen lifestyle	Very	29.9	35.4	36.8	*	16.6	31.0
	Somewhat	42.6	43.8	44.8	*	68.9	46.5
	Not very	27.5	20.8	18.4	*	14.5	22.5
Boredom	Very	30.4	46.7	63.0	*	54.2	63.4
	Somewhat	34.7	36.8	27.6	*	37.2	28.2
	Not very	34.9	16.5	9.5	*	8.6	8.4
Relieve stress	Very	57.2	59.3	60.9	*	62.8	66.7
	Somewhat	28.0	32.4	34.6	*	28.6	30.0
	Not very	14.9	8.4	4.6	*	8.6	3.3
Curiosity	Very	45.6	57.9	62.5	*	56.6	62.9
	Somewhat	36.0	31.6	31.7	*	34.8	33.3
	Not very	18.4	10.5	5.8	*	8.6	3.8
To have fun	Very	54.9	67.1	75.7	*	65.5	88.0
	Somewhat	29.3	25.7	22.2	*	25.8	10.1
	Not very	15.8	7.2	2.1	*	8.6	1.9
Not sure why	Very	26.1	22.7	22.2	*	21.9	24.8
	Somewhat	30.4	39.2	43.7	*	50.0	39.8
	Not very	43.5	38.0	34.1	*	28.1	35.4

\* Number insufficient to report statistics (N<10).

**Table 16-3. Alcohol – 2011**

Reason	Importance	Grades / Lifetime user: NO			Grades / Lifetime user: YES		
		7-8	9-10	11-12	7-8	9-10	11-12
Number of respondents		138	141	104	48	91	103
		%	%	%	%	%	%
Fit in with friends	Very	52.8	67.0	60.7	33.4	42.8	38.8
	Somewhat	24.4	17.4	22.6	33.3	32.2	39.0
	Not very	22.8	15.6	16.7	33.3	24.9	22.2
Parents or others in family drink	Very	34.6	22.7	20.7	26.7	16.8	14.8
	Somewhat	40.2	49.8	47.5	33.3	42.6	46.2
	Not very	25.2	27.6	31.8	39.9	40.6	39.0
Readily available	Very	32.1	26.0	26.8	26.7	15.2	23.9
	Somewhat	37.7	49.2	41.4	40.0	53.2	48.7
	Not very	30.2	24.8	31.8	33.3	31.6	27.4
Family tradition for special occasions	Very	23.0	14.2	14.9	26.7	12.8	13.4
	Somewhat	47.7	49.7	44.0	40.0	43.7	48.4
	Not very	29.3	36.1	41.1	33.3	43.5	38.2
Personal choice	Very	30.5	30.9	35.9	40.1	45.0	58.2
	Somewhat	41.0	49.8	49.5	40.0	50.5	36.5
	Not very	28.5	19.3	14.5	19.9	4.4	5.3
Boredom	Very	17.7	31.1	46.1	20.0	27.6	47.4
	Somewhat	36.8	45.8	30.3	26.6	40.2	35.8
	Not very	45.5	23.1	23.6	53.3	32.2	16.8
Relieve stress	Very	45.5	38.0	38.3	40.1	36.4	44.2
	Somewhat	32.7	41.2	38.6	33.3	33.3	36.4
	Not very	21.8	20.9	23.1	26.6	30.2	19.4
Curiosity	Very	37.6	40.4	46.9	33.4	38.4	45.3
	Somewhat	39.6	45.4	43.3	53.3	49.0	42.7
	Not very	22.8	14.2	9.8	13.3	12.6	12.1
To have fun	Very	43.7	62.6	63.7	40.1	66.2	73.7
	Somewhat	32.0	22.4	24.3	33.3	29.8	20.3
	Not very	24.3	15.0	12.0	26.6	4.0	6.0
Not sure why	Very	17.1	16.4	16.3	13.4	15.0	22.7
	Somewhat	33.9	45.3	46.6	46.7	46.6	42.0
	Not very	49.0	38.3	37.1	39.9	38.4	35.4

**Table 16-4. Marijuana – 2011**

Reason	Importance	Grades / Lifetime user: NO			Grades / Lifetime user: YES		
		7-8	9-10	11-12	7-8	9-10	11-12
		%	%	%	%	%	%
Fit in with friends	Very	63.1	69.6	61.9	*	45.4	46.8
	Somewhat	21.7	23.1	29.5	*	30.8	27.3
	Not very	15.3	7.3	8.6	*	23.8	25.9
Adults they know use marijuana	Very	30.9	22.6	16.3	*	24.9	16.6
	Somewhat	39.2	43.0	41.6	*	31.9	24.3
	Not very	29.9	34.4	42.0	*	43.2	59.1
Readily available	Very	26.8	27.3	35.8	*	64.5	54.5
	Somewhat	34.8	49.4	45.5	*	24.9	25.7
	Not very	38.3	23.3	18.7	*	10.6	19.8
Personal choice	Very	38.2	45.3	58.9	*	79.4	80.4
	Somewhat	44.6	43.6	34.0	*	20.6	14.6
	Not very	17.2	11.1	7.2	*	0.0	5.1
Fits chosen lifestyle	Very	24.2	29.0	33.0	*	46.5	44.1
	Somewhat	42.0	50.9	49.2	*	35.2	30.6
	Not very	33.7	20.1	17.8	*	18.3	25.3
Boredom	Very	23.3	47.7	59.7	*	58.9	67.4
	Somewhat	40.9	37.2	28.7	*	27.7	19.2
	Not very	35.8	15.2	11.6	*	13.5	13.4
Relieve stress	Very	54.0	52.8	61.1	*	61.2	69.8
	Somewhat	29.5	38.3	30.0	*	24.9	23.5
	Not very	16.5	9.0	8.9	*	13.9	6.7
Curiosity	Very	45.7	57.2	64.3	*	58.2	66.8
	Somewhat	36.5	34.3	28.6	*	38.3	25.7
	Not very	17.8	8.5	7.1	*	3.5	7.5
To have fun	Very	43.5	66.9	76.2	*	75.9	81.6
	Somewhat	35.5	24.4	17.8	*	24.1	14.6
	Not very	20.9	8.7	6.1	*	0.0	3.8
Not sure why	Very	16.3	18.6	20.6	*	20.2	26.3
	Somewhat	40.2	51.8	46.2	*	41.8	35.0
	Not very	43.5	29.6	33.2	*	37.9	38.7

\* Number insufficient to report statistics (N<10).

**Table 16-5. Alcohol – 2009**

Reason	Importance	Grades / Recent user: NO			Grades / Recent user: YES		
		7-8	9-10	11-12	7-8	9-10	11-12
		%	%	%	%	%	%
Fit in with friends	Very	46.8	57.3	59.2	31.8	44.4	37.0
	Somewhat	24.4	24.1	29.2	36.4	36.1	39.0
	Not very	28.8	18.6	11.5	31.8	19.4	24.0
Parents or others in family drink	Very	28.3	24.5	17.7	40.9	15.3	14.5
	Somewhat	39.8	44.4	50.8	31.8	48.6	44.1
	Not very	31.8	31.1	31.5	27.3	36.1	41.4
Readily available	Very	23.5	31.0	26.2	36.4	27.8	26.2
	Somewhat	37.5	42.6	50.8	31.8	48.6	52.4
	Not very	39.0	26.4	23.1	31.8	23.6	21.4
Family tradition for special occasions	Very	19.2	14.6	15.5	50.0	12.7	9.6
	Somewhat	43.5	47.7	38.0	27.3	35.2	39.7
	Not very	37.4	37.7	46.5	22.7	52.1	50.7
Personal choice	Very	32.5	39.4	46.2	54.5	53.5	52.1
	Somewhat	39.5	41.4	45.4	22.7	42.3	41.8
	Not very	28.0	19.2	8.5	22.7	4.2	6.2
Fits chosen lifestyle	Very	18.7	28.6	22.3	42.9	25.0	23.3
	Somewhat	37.1	42.2	50.0	28.6	43.1	50.0
	Not very	44.1	29.1	27.7	28.6	31.9	26.7
Boredom	Very	23.3	38.2	37.7	27.3	30.6	39.0
	Somewhat	35.8	31.2	45.4	50.0	47.2	47.3
	Not very	40.9	30.7	16.9	22.7	22.2	13.7
Relieve stress	Very	37.7	38.4	34.4	27.3	37.5	34.2
	Somewhat	34.8	39.9	39.8	54.5	41.7	50.0
	Not very	27.5	21.7	25.8	18.2	20.8	15.8
Curiosity	Very	32.2	45.7	43.4	36.4	45.8	39.7
	Somewhat	40.8	43.2	46.5	40.9	41.7	50.0
	Not very	27.1	11.1	10.1	22.7	12.5	10.3
To have fun	Very	37.6	68.3	72.7	54.5	75.0	76.7
	Somewhat	32.5	17.1	21.9	27.3	22.2	21.2
	Not very	29.9	14.6	5.5	18.2	2.8	2.1

**Table 16-6. Marijuana – 2009**

Reason	Importance	Grades / Recent user: NO			Grades / Recent user: YES		
		7-8	9-10	11-12	7-8	9-10	11-12
		%	%	%	%	%	%
Fit in with friends	Very	61.2	67.8	63.4	60.0	58.6	29.1
	Somewhat	18.8	22.2	27.8	20.0	27.6	43.0
	Not very	20.0	10.0	8.8	20.0	13.8	27.8
Adults they know use marijuana	Very	26.4	16.7	13.9	40.0	17.9	20.3
	Somewhat	38.6	43.3	39.7	40.0	28.6	32.9
	Not very	35.0	40.0	46.4	20.0	53.6	46.8
Readily available	Very	20.0	29.7	36.8	80.0	72.4	43.6
	Somewhat	41.2	44.4	47.2	20.0	17.2	47.4
	Not very	38.8	25.9	16.1	0.0	10.3	9.0
Personal choice	Very	38.7	51.9	57.7	60.0	72.4	63.3
	Somewhat	40.2	36.8	39.2	20.0	27.6	35.4
	Not very	21.1	11.3	3.1	20.0	0.0	1.3
Fits chosen lifestyle	Very	24.0	34.0	41.7	40.0	48.3	35.4
	Somewhat	41.0	41.9	37.5	20.0	37.9	39.2
	Not very	35.0	24.1	20.8	40.0	13.8	25.3
Boredom	Very	32.3	44.6	56.5	60.0	62.1	55.7
	Somewhat	38.4	35.4	33.2	40.0	24.1	36.7
	Not very	29.3	20.0	10.4	0.0	13.8	7.6
Relieve stress	Very	46.6	53.5	55.2	80.0	75.9	59.5
	Somewhat	32.9	30.7	36.1	20.0	17.2	36.7
	Not very	20.4	15.8	8.8	0.0	6.9	3.8
Curiosity	Very	45.5	57.5	66.0	40.0	55.2	54.4
	Somewhat	35.2	34.6	30.9	60.0	34.5	39.2
	Not very	19.4	7.9	3.1	0.0	10.3	6.3
To have fun	Very	44.8	70.5	78.9	80.0	96.6	77.2
	Somewhat	32.4	20.3	18.0	20.0	3.4	22.8
	Not very	22.7	9.1	3.1	0	0	0
Not sure why	Very	18.9	26.3	18.8	25.0	24.1	23.1
	Somewhat	40.5	42.5	50.5	75.0	20.7	34.6
	Not very	40.5	31.3	30.7	0.0	55.2	42.3

**Table 17. Reasons for NOT using substances** Thinking of people about your age who do not [drink/smoke/use marijuana], how important do you think these reasons were in influencing them not to use [each substance]?

**Table 17-1. Alcohol - 2013**

Reason	Importance	Grades / Lifetime user: NO			Grades / Lifetime user: YES		
		7-8	9-10	11-12	7-8	9-10	11-12
		%	%	%	%	%	%
Personal choice	Very	73.7	73.5	75.0	66.2	65.6	76.2
	Somewhat	20.9	23.1	23.1	25.3	28.4	22.8
	Not very	5.4	3.3	1.9	8.6	6.0	1.0
Disapproval of parent(s)	Very	68.8	67.5	47.8	66.7	61.2	49.9
	Somewhat	24.8	28.4	41.5	25.3	28.3	39.9
	Not very	6.4	4.1	10.7	8.1	10.5	10.2
Disapproval of friends/peers	Very	62.9	57.2	42.4	58.1	40.6	41.9
	Somewhat	28.2	36.6	45.2	25.3	34.9	33.9
	Not very	8.9	6.1	12.3	16.7	24.6	24.2
Bad experiences of family/friends	Very	60.4	58.1	55.9	66.2	50.5	47.6
	Somewhat	31.0	33.8	37.5	17.2	28.5	44.8
	Not very	8.6	8.1	6.6	16.7	21.0	7.7
Education about alcohol	Very	69.5	54.1	27.9	65.7	40.6	24.2
	Somewhat	22.2	30.8	46.1	17.2	24.8	42.7
	Not very	8.3	15.1	25.9	17.2	34.7	33.1
Health reasons	Very	71.2	58.6	48.6	57.1	42.1	43.5
	Somewhat	22.4	31.7	42.3	17.2	35.5	40.5
	Not very	6.4	9.7	9.2	25.8	22.4	15.9
Legal reasons	Very	69.7	59.4	43.3	66.2	51.1	32.5
	Somewhat	21.4	31.5	39.7	25.3	34.7	42.9
	Not very	8.9	9.1	16.9	8.6	14.3	24.6
Ethical/moral reasons	Very	77.2	62.0	64.1	58.1	59.0	50.5
	Somewhat	18.3	31.5	26.7	17.2	30.7	38.5
	Not very	4.5	6.6	9.2	24.7	10.3	11.0
Does not fit chosen lifestyle	Very	66.2	67.0	46.3	66.2	54.8	50.6
	Somewhat	25.2	27.3	43.3	25.3	30.7	38.1
	Not very	8.5	5.7	10.3	8.6	14.5	11.3
Alcoholic beverages not available	Very	28.2	35.6	20.5	32.8	32.7	32.2
	Somewhat	33.4	34.4	42.5	42.4	42.8	35.5
	Not very	38.4	29.9	36.9	24.7	24.6	32.3



**Table 17-2. Marijuana - 2013**

Reason	Importance	Grades / Lifetime user: NO			Grades / Lifetime user: YES		
		7-8	9-10	11-12	7-8	9-10	11-12
		%	%	%	%	%	%
Personal choice	Very	66.5	68.8	75.4	*	75.1	69.4
	Somewhat	24.5	26.4	22.8	*	24.9	27.2
	Not very	9.0	4.8	1.9	*	0.0	3.5
Disapproval of parent(s)	Very	69.0	63.1	47.6	*	63.8	43.2
	Somewhat	21.0	29.3	39.4	*	33.5	47.0
	Not very	10.0	7.6	13.0	*	2.7	9.8
Disapproval of of friends/peers	Very	69.4	57.7	50.8	*	63.8	39.5
	Somewhat	19.5	33.1	37.2	*	36.2	49.1
	Not very	11.1	9.2	12.0	*	0.0	11.4
Bad experiences of family/friends	Very	55.4	46.4	37.0	*	56.6	30.8
	Somewhat	31.4	35.5	44.0	*	37.8	47.0
	Not very	13.2	18.2	18.9	*	5.5	22.2
Education about marijuana	Very	64.8	44.3	30.1	*	55.4	18.3
	Somewhat	22.6	36.5	37.8	*	36.5	50.3
	Not very	12.6	19.2	32.0	*	8.1	31.4
Health reasons	Very	77.4	57.8	51.2	*	51.1	47.8
	Somewhat	15.7	29.3	30.5	*	43.1	34.9
	Not very	7.0	12.9	18.3	*	5.8	17.3
Legal reasons	Very	72.9	64.8	59.0	*	50.0	50.3
	Somewhat	18.9	26.8	30.0	*	41.9	36.2
	Not very	8.2	8.5	11.0	*	8.1	13.5
Ethical/moral reasons	Very	71.6	64.3	59.9	*	66.5	57.4
	Somewhat	20.5	29.0	30.6	*	30.8	35.0
	Not very	7.9	6.7	9.5	*	2.7	7.6
Does not fit chosen lifestyle	Very	64.7	57.9	55.7	*	69.5	42.0
	Somewhat	25.5	31.7	30.9	*	30.5	43.5
	Not very	9.8	10.4	13.4	*	0.0	14.5
Marijuana not available	Very	42.3	32.4	23.0	*	27.8	19.3
	Somewhat	27.1	40.4	30.2	*	50.3	44.7
	Not very	30.6	27.1	46.8	*	21.9	36.0

\* Number insufficient to report statistics (N<10).

**Table 17-3. Alcohol - 2011**

Reason	Importance	Grades / Lifetime user: NO			Grades / Lifetime user: YES		
		7-8	9-10	11-12	7-8	9-10	11-12
		%	%	%	%	%	%
Personal choice	Very	60.8	65.6	77.7	86.7	64.0	75.3
	Somewhat	30.9	30.5	19.0	13.3	36.0	20.4
	Not very	8.3	3.8	3.3	0.0	0.0	4.3
Disapproval of parent(s)	Very	67.9	55.9	49.8	53.3	52.8	54.9
	Somewhat	25.3	34.5	40.7	20.0	32.0	32.3
	Not very	6.9	9.6	9.6	26.7	15.2	12.8
Disapproval of friends/peers	Very	59.0	48.3	48.3	33.3	53.2	38.2
	Somewhat	30.5	41.2	37.9	53.3	40.6	39.1
	Not very	10.5	10.5	13.9	13.3	6.2	22.7
Bad experiences of family/friends	Very	62.0	55.0	58.2	53.4	44.4	60.4
	Somewhat	31.2	34.1	34.3	33.3	47.0	31.0
	Not very	6.9	10.9	7.5	13.3	8.6	8.6
Education about alcohol	Very	68.9	37.4	32.7	60.0	38.2	27.8
	Somewhat	22.6	43.4	42.2	20.0	34.2	38.2
	Not very	8.5	19.1	25.1	20.0	27.6	34.1
Health reasons	Very	76.4	57.4	52.2	60.0	51.0	44.8
	Somewhat	19.7	33.8	33.7	20.0	36.2	35.6
	Not very	3.9	8.8	14.1	20.0	12.8	19.7
Legal reasons	Very	68.9	50.7	43.8	46.7	36.2	34.2
	Somewhat	23.9	35.4	32.7	33.3	38.6	34.9
	Not very	7.2	13.9	23.5	20.0	25.2	30.9
Ethical/moral reasons	Very	69.2	59.0	61.8	60.0	58.6	56.5
	Somewhat	26.6	32.9	28.4	26.7	33.1	30.5
	Not very	4.3	8.1	9.8	13.3	8.3	13.0
Does not fit chosen lifestyle	Very	57.4	56.6	51.6	60.0	46.1	62.4
	Somewhat	33.4	33.0	37.9	33.3	45.3	28.0
	Not very	9.2	10.5	10.6	6.6	8.6	9.6
Alcoholic beverages not available	Very	28.6	22.0	21.5	53.3	31.6	21.7
	Somewhat	36.5	37.4	42.9	26.7	44.8	42.8
	Not very	34.9	40.6	35.6	20.0	23.6	35.6

**Table 17-4. Marijuana - 2011**

Reason	Importance	Grades / Lifetime user: NO			Grades / Lifetime user: YES		
		7-8	9-10	11-12	7-8	9-10	11-12
		%	%	%	%	%	%
Personal choice	Very	65.0	65.4	74.6	*	61.0	70.6
	Somewhat	30.3	31.7	22.4	*	31.6	23.1
	Not very	4.7	2.9	3.0	*	7.4	6.3
Disapproval of parent(s)	Very	72.2	53.4	47.9	*	43.0	47.2
	Somewhat	23.0	40.8	44.2	*	46.3	38.3
	Not very	4.7	5.8	7.9	*	10.7	14.6
Disapproval of of friends/peers	Very	62.6	59.4	53.0	*	42.6	45.9
	Somewhat	31.7	34.4	37.1	*	42.6	41.1
	Not very	5.7	6.2	9.9	*	14.7	13.0
Bad experiences of family/friends	Very	60.4	44.0	47.2	*	32.0	32.6
	Somewhat	30.1	45.5	37.7	*	36.0	34.6
	Not very	9.5	10.5	15.0	*	32.0	32.8
Education about marijuana	Very	65.9	34.9	36.5	*	28.3	23.5
	Somewhat	26.8	47.9	41.0	*	32.0	33.6
	Not very	7.3	17.1	22.5	*	39.7	42.9
Health reasons	Very	80.1	60.3	56.7	*	39.0	35.6
	Somewhat	16.4	31.3	28.0	*	36.0	41.9
	Not very	3.5	8.4	15.3	*	25.0	22.5
Legal reasons	Very	70.5	53.0	55.1	*	46.3	45.7
	Somewhat	24.7	40.1	33.4	*	28.7	33.4
	Not very	4.8	6.9	11.5	*	25.0	20.8
Ethical/moral reasons	Very	72.2	60.9	67.9	*	60.7	56.7
	Somewhat	22.4	35.6	25.5	*	25.0	31.4
	Not very	5.4	3.6	6.6	*	14.3	11.9
Does not fit chosen lifestyle	Very	62.5	54.9	57.9	*	39.3	49.8
	Somewhat	31.2	37.9	32.9	*	46.0	38.3
	Not very	6.3	7.2	9.2	*	14.7	11.9
Marijuana not available	Very	39.5	24.7	25.4	*	24.6	24.9
	Somewhat	33.6	49.9	42.2	*	18.0	32.4
	Not very	26.9	25.4	32.4	*	57.4	42.7

\* Number insufficient to report statistics (N<10).

**Table 17-5. Alcohol - 2009**

Reason	Importance	Grades / Recent user: NO			Grades / Recent user: YES		
		7-8	9-10	11-12	7-8	9-10	11-12
		%	%	%	%	%	%
Personal choice	Very	72.2	69.8	79.8	60.0	73.2	68.3
	Somewhat	23.0	26.6	18.6	30.0	22.5	28.3
	Not very	4.7	3.5	1.6	10.0	4.2	3.4
Disapproval of parent(s)	Very	66.6	61.6	45.3	54.5	57.7	34.9
	Somewhat	26.2	30.8	47.7	36.4	32.4	50.0
	Not very	7.3	7.6	7.0	9.1	9.9	15.1
Disapproval of friends/peers	Very	59.2	49.5	45.0	50.0	33.8	30.1
	Somewhat	30.7	41.4	38.8	31.8	45.1	45.2
	Not very	10.1	9.1	16.3	18.2	21.1	24.7
Bad experiences of family/friends	Very	59.2	53.3	41.1	57.1	43.7	57.5
	Somewhat	30.4	37.7	46.5	38.1	40.8	37.7
	Not very	10.4	9.0	12.4	4.8	15.5	4.8
Education about Alcohol	Very	67.4	35.9	32.6	68.2	28.6	17.8
	Somewhat	23.4	43.4	38.0	27.3	35.7	42.5
	Not very	9.2	20.7	29.5	4.5	35.7	39.7
Health reasons	Very	72.8	57.8	46.5	68.2	38.0	43.8
	Somewhat	19.0	31.7	43.3	27.3	45.1	41.1
	Not very	8.2	10.6	10.2	4.5	16.9	15.1
Legal reasons	Very	67.5	47.7	43.4	54.5	50.7	30.1
	Somewhat	25.2	35.2	39.5	31.8	35.2	35.6
	Not very	7.3	17.1	17.1	13.6	14.1	34.2
Ethical/moral Reasons	Very	73.7	58.8	62.5	72.7	59.2	46.6
	Somewhat	21.6	32.2	32.0	22.7	31.0	37.7
	Not very	4.8	9.0	5.5	4.5	9.9	15.8
Does not fit chosen lifestyle	Very	66.5	59.1	52.7	68.2	45.7	47.3
	Somewhat	27.5	32.3	38.0	27.3	41.4	43.8
	Not very	6.0	8.6	9.3	4.5	12.9	8.9

**Table 17-6. Marijuana - 2009**

Reason	Importance	Grades / Recent user: NO			Grades / Recent user: YES		
		7-8	9-10	11-12	7-8	9-10	11-12
		%	%	%	%	%	%
Personal choice	Very	72.3	67.6	75.5	80.0	62.1	58.2
	Somewhat	21.6	28.2	21.9	20.0	27.6	40.5
	Not very	6.1	4.1	2.6	0.0	10.3	1.3
Disapproval of parent(s)	Very	71.7	56.8	47.4	60.0	44.8	38.0
	Somewhat	22.3	34.0	42.8	20.0	37.9	44.3
	Not very	6.0	9.1	9.8	20.0	17.2	17.7
Disapproval of of friends/peers	Very	68.3	61.0	51.0	60.0	44.8	34.6
	Somewhat	25.4	35.3	38.1	40.0	34.5	51.3
	Not very	6.3	3.7	10.8	0.0	20.7	14.1
Bad experiences of family/friends	Very	63.6	50.0	38.7	60.0	37.9	34.2
	Somewhat	30.0	34.2	45.4	20.0	31.0	45.6
	Not very	6.4	15.8	16.0	20.0	31.0	20.3
Education about Marijuana	Very	66.0	37.5	24.7	60.0	24.1	16.5
	Somewhat	23.1	44.2	46.9	20.0	41.4	44.3
	Not very	10.9	18.3	28.4	20.0	34.5	39.2
Health reasons	Very	76.3	59.8	51.5	40.0	41.4	40.5
	Somewhat	20.1	33.2	33.5	40.0	31.0	38.0
	Not very	3.6	7.1	14.9	20.0	27.6	21.5
Legal reasons	Very	72.2	56.0	56.2	60.0	51.7	43.6
	Somewhat	22.7	35.3	34.5	20.0	31.0	42.3
	Not very	5.1	8.7	9.3	20.0	17.2	14.1
Ethical/moral Reasons	Very	74.5	61.4	62.4	40.0	51.7	46.8
	Somewhat	20.9	32.8	32.5	40.0	31.0	41.8
	Not very	4.5	5.8	5.2	20.0	17.2	11.4
Does not fit chosen lifestyle	Very	66.2	58.2	50.8	40.0	48.3	44.9
	Somewhat	28.7	35.1	38.9	40.0	37.9	42.3
	Not very	5.1	6.7	10.4	20.0	13.8	12.8
Marijuana not Available	Very	40.2	26.1	20.1	40.0	34.5	16.5
	Somewhat	35.3	40.7	37.6	40.0	31.0	40.5
	Not very	24.5	33.2	42.3	20.0	34.5	43.0

**SECTION 3. INDIVIDUAL / PEER DOMAIN**

**Table 18. Availability of alcohol, tobacco, drugs and guns**

Questions & Responses	Grade / Year														
	Grade 7-8					Grade 9-10					Grade 11-12				
	2005	2007	2009	2011	2013	2005	2007	2009	2011	2013	2005	2007	2009	2011	2013
	%	%	%	%	%	%	%	%	%	%	%	%	%	%	%
If you wanted to, how easy would it be for you to get:															
Alcoholic beverages															
Very easy	24.4	23.7	35.6	34.1	25.8	39.7	39.6	49.1	46.1	44.6	60.9	60.9	54.8	58.0	51.0
Sort of easy	26.1	26.4	32.6	30.0	31.5	37.1	40.9	33.8	33.5	35.3	29.3	29.3	36.7	33.4	32.9
Sort of hard	28.2	27.8	17.8	19.5	21.8	17.3	12.4	12.3	14.7	13.3	7.1	7.1	6.7	6.3	10.9
Very hard	21.3	22.0	13.9	16.4	20.9	5.9	7.0	4.8	5.8	6.8	2.6	2.6	1.9	2.3	5.1
Cigarettes															
Very easy	12.5	7.8	11.3	13.0	11.0	29.8	27.4	33.5	26.1	19.6	68.4	62.3	67.8	56.7	46.6
Sort of easy	12.9	10.9	20.5	21.4	18.3	22.4	18.1	30.1	28.4	27.9	15.4	17.4	20.7	22.6	24.7
Sort of hard	15.7	17.7	28.2	22.9	21.3	23.5	26.1	24.2	24.0	26.4	7.9	9.1	7.8	15.2	14.3
Very hard	58.9	63.6	40.1	42.7	49.3	24.3	28.4	12.3	21.5	26.0	8.3	11.2	3.7	5.5	14.4
Marijuana															
Very easy	5.6	3.4	8.0	7.2	10.2	20.3	17.4	27.1	26.7	28.5	42.1	40.0	50.0	53.7	53.1
Sort of easy	6.6	3.7	10.4	7.8	9.6	17.0	20.5	25.3	22.4	24.0	27.4	29.5	32.6	23.8	22.4
Sort of hard	11.9	8.5	20.5	19.6	15.3	18.8	17.4	24.2	19.9	19.8	15.4	13.8	11.5	12.8	9.4
Very hard	75.9	84.4	61.0	65.4	65.0	43.9	44.6	23.4	31.1	27.6	15.0	16.7	5.9	9.7	15.1
A drug like cocaine, heroin, LSD or amphetamines															
Very easy	1.7	1.7	4.2	3.4	3.1	4.4	4.7	4.8	5.0	6.3	17.3	10.9	11.9	10.3	9.2
Sort of easy	3.5	2.0	5.4	5.3	6.2	12.1	11.4	11.9	10.6	12.3	18.8	23.6	21.5	20.1	15.7
Sort of hard	10.1	6.8	15.5	16.5	11.3	19.5	18.4	30.5	23.2	25.7	27.8	25.7	38.1	33.3	26.4
Very hard	84.7	89.5	74.9	74.8	79.4	64.0	65.6	52.8	61.3	55.7	36.1	39.9	28.5	36.4	48.7
A gun															
Very easy	7.0	7.8	7.1	8.4	7.6	7.0	6.4	7.1	8.8	4.3	9.0	8.3	7.0	8.8	6.4
Sort of easy	3.8	7.8	12.8	12.1	5.5	5.9	5.4	7.8	8.5	11.9	11.7	8.7	11.5	8.6	8.2
Sort of hard	15.0	11.5	16.3	13.6	14.0	18.4	20.1	26.4	22.1	21.5	26.7	25.4	31.9	27.0	19.1
Very hard	74.2	73.0	63.8	65.9	72.9	68.8	68.1	58.7	60.6	62.3	52.6	57.6	49.6	55.6	66.3

**Table 19. Sources for obtaining cigarettes  
(Responses of youth who report lifetime cigarette use)**

Questions & Responses	Grade / Year														
	Grade 7-8					Grade 9-10					Grade 11-12				
	2005	2007	2009	2011	2013	2005	2007	2009	2011	2013	2005	2007	2009	2011	2013
	%	%	%	%	%	%	%	%	%	%	%	%	%	%	%
Your parents with their permission															
Sometimes	12.5	5.6	8.3	8.3	10.8	6.6	*	4.2	0.0	0.0	4.5	1.6	5	1.9	2.0
Often	3.1	5.6	25	0.0	10.8	*	*	*	3.6	0.0	3.8	4.1	1.7	1.1	1.7
Your parents without their permission															
Sometimes	18.8	27.8	16.7	54.6	56.1	23.0	19.1	27.1	20.3	27.8	9.8	14.8	16.1	18.0	18.1
Often	6.3	11.1	16.7	0.0	0.0	3.3	1.5	12.5	10.3	0.0	3.8	4.1	5.9	6.2	14.7
Your friends															
Sometimes	40.6	55.6	16.7	54.6	50.6	42.6	39.7	52.1	48.0	52.3	35.6	41.8	50.4	46.3	41.9
Often	3.1	11.1	58.3	9.1	19.5	14.8	17.6	27.1	24.2	22.0	20.5	25.4	18.5	19.0	23.1
Your brother(s) or sister(s)															
Sometimes	9.4	16.7	8.3	0.0	0.0	16.4	10.3	20.8	12.8	14.3	12.1	9	15.3	14.9	19.0
Often	*	5.6	41.7	0.0	21.6	1.6	5.9	4.2	10.3	4.6	2.3	4.1	1.7	2.1	0.0
Stores (you buy them)															
Sometimes	6.3	*	8.3	0.0	22.3	4.9	5.9	16.7	3.6	13.2	15.2	23	20.8	16.9	29.3
Often	3.1	5.6	16.7	0.0	0.0	4.9	*	4.2	0.0	0.0	18.2	10.7	17.5	16.3	8.9
Machines (you buy them)															
Sometimes	3.1	5.6	16.7	0.0	10.8	1.6	1.5	*	0.0	4.4	*	3.3	2.5	2.1	2.0
Often	3.1	5.6	16.7	0.0	10.8	1.6	*	*	0.0	0.0	1.5	*	3.4	1.1	1.7

\* Less than 1%

**Table 20. Sources for obtaining alcoholic beverages (Responses of youth who report lifetime alcohol use)**

Questions & Responses	Grade 7-8					Grade 9-10					Grade 11-12				
	2005	2007	2009	2011	2013	2005	2007	2009	2011	2013	2005	2007	2009	2011	2013
	%	%	%	%	%	%	%	%	%	%	%	%	%	%	%
Home, with your parents' permission															
Sometimes	44.4	48.1	31.6	45.8	31.6	26.6	32.4	34.1	35.0	34.1	26.3	28.2	33.6	30.5	33.6
Often	7.9	3.7	10.5	10.2	10.5	2.6	2.3	0.7	3.0	0.7	2.3	4.7	4.1	5.8	4.1
Home, without your parents' permission															
Sometimes	33.3	22.2	14	15.3	14.0	40.3	39.2	45.9	34.5	45.9	33.6	41.8	45.2	40.1	45.2
Often	12.7	7.4	3.5	1.7	3.5	7.1	9.7	11.1	2.8	11.1	3.7	7	8.8	9.3	8.8
Your friends															
Sometimes	20.6	37	24.6	17.0	24.6	43.5	44.3	46.7	35.9	46.7	35.9	41.8	42.6	48.3	42.6
Often	12.7	3.7	3.5	3.4	3.5	24.0	31.3	23.7	15.8	23.7	41.5	42.3	38	34.3	38.0
Your brother(s) or sister(s)															
Sometimes	14.3	20.3	12.3	11.9	12.3	20.1	19.3	21.5	23.5	21.5	22.6	21.1	23.8	23.5	23.8
Often	9.5	1.9	1.8	1.7	1.8	5.2	5.1	7.4	4.0	7.4	5.1	9.9	6.5	8.3	6.5
From other people who buy it for you															
Sometimes	14.3	9.3	1.8	1.7	1.8	24.7	23.9	25.2	12.5	25.2	29.5	30	33.3	28.1	33.3
Often	4.8	1.9	3.5	1.7	3.5	14.9	15.3	11.9	8.9	11.9	29.0	32.9	30.1	24.7	30.1
At a restaurant (you buy it)															
Sometimes	11.1	3.7	15.8	13.6	15.8	1.9	9.1	12.6	23.3	23.9	10.6	11.7	19.1	34.7	33.8
Often	*	1.9	*	5.1	5.3	2.6	*	*	4.9	6.0	2.8	1.4	1.4	11.2	11.1
At a party with adults present who are aware of underage drinking															
Sometimes	**	**	15.8	11.9	5.3	**	**	23.9	25.2	34.1	**	**	33.8	33.9	45.1
Often	**	**	5.3	3.4	3.5	**	**	6	5.9	8.1	**	**	11.1	15.3	10.2
At a party with adults present but unaware of underage drinking															
Sometimes	**	**	5.3	11.9	8.8	**	**	34.1	34.5	37.8	**	**	45.1	40.5	42.1
Often	**	**	3.5	3.4	5.3	**	**	8.1	11.7	19.3	**	**	10.2	28.3	35.6
At a party with no adults present															
Sometimes	**	**	8.8	13.6	15.8	**	**	37.8	15.3	12.6	**	**	42.1	14.6	19.1
Often	**	**	5.3	0.0	0.0	**	**	19.3	0.0	0.0	**	**	35.6	0.8	1.4
At a store or bar (you buy it)															
Sometimes	**	**	*	1.7	0.0	**	**	2.2	3.8	2.2	**	**	7.9	9.3	7.9
Often	**	**	*	0.0	0.0	**	**	*	0.0	0.0	**	**	0.9	2.0	0.9

\* Less than 1% \*\* Data not collected.



**Table 21. Place and prevalence of alcohol use (Responses of youth who report recent use of alcohol)**

Questions & Responses	Grade / Year														
	Grade 7-8					Grade 9-10					Grade 11-12				
	2005	2007	2009	2011	2013	2005	2007	2009	2011	2013	2005	2007	2009	2011	2013
	%	%	%	%	%	%	%	%	%	%	%	%	%	%	%
At home															
1-2 times	25.7	13.3	54.2	66.7	42.6	20.1	37.0	44.4	32.8	48.7	21.4	21.2	39.5	32.5	44.6
3 or more times	4.6	0.0	12.5	20.0	7.0	10.1	11.7	12.5	8.4	17.7	12.7	21.2	10.2	13.0	13.2
On the street, in the woods, or in parks or fields															
1-2 times	11.0	16.6	16.7	0.0	0.0	13.1	18.2	23.6	9.9	19.6	17.2	23.0	23.3	20.8	10.4
3-5 times	9.2	5.5	8.3	6.7	7.0	7.8	10.7	8.3	3.9	11.8	10.7	17.3	10.3	6.3	5.3
With older friends															
1-2 times	12.8	14.9	20.8	33.4	7.0	20.3	27.3	45.1	35.4	28.9	17.7	26.7	39.5	34.8	26.1
3-5 times	9.2	5.5	16.7	0.0	0.0	14.3	20.7	18.3	8.0	21.7	18.6	25.9	25.9	15.4	17.9
At the homes of other people															
1-2 times	19.3	5.5	25.0	26.7	14.3	25.4	33.1	38.9	39.3	48.1	29.6	33.9	45.6	39.1	4.2
3-5 times	*	5.5	12.5	6.7	0.0	15.4	28.0	20.8	10.4	24.3	30.6	30.6	36.7	22.8	1.2
At school activities, like dances or football games															
1-2 times	*	*	*	0.0	0.0	5.3	11.4	5.6	6.5	5.9	6.0	3.7	4.8	8.8	1.2
3-5 times	*	*	4.2	0.0	0.0	*	*	1.4	0.0	1.9	4.3	2.5	1.4	0.0	1.0
At work															
1-2 times	*	*	*	0.0	0.0	*	*	*	0.0	0.0	2.3	5.7	2.7	2.6	1.0
3-5 times	*	*	*	0.0	0.0	*	*	1.4	0.0	0.0	3.3	1.4	*	0.0	0.0
When skipping school															
1-2 times	4.6	*	*	0.0	0.0	*	*	*	0.0	1.9	1.8	2.8	4.1	2.6	4.2
3-5 times	*	*	8.3	0.0	7.0	*	*	2.8	0.0	0.0	2.3	1.9	2.0	2.1	1.2
While driving a car, truck or motorcycle															
1-2 times	*	*	*	0.0	0.0	*	*	2.8	0.0	1.9	5.2	5.2	7.5	5.4	22.5
3-5 times	*	*	*	0.0	0.0	2.8	*	4.2	0.0	0.0	8.9	4.6	3.4	1.4	8.2
While a passenger in a car with someone who has been drinking or using drugs.															
1-2 times	5.0	*	**	**	**	5.3	12.4	**	**	**	6.9	9.4	**	**	**
3-5 times	*	*	**	**	**	6.0	3.2	**	**	**	11.9	7.2	**	**	**
At a party with an adult present who are aware of underage drinking															
1-2 times	**	**	16.7	33.3	0.0	**	**	21.1	29.4	17.9	**	**	32.0	19.6	23.8
3-5 times	**	**	4.2	6.7	0.0	**	**	5.6	2.2	1.9	**	**	12.2	11.0	8.8

**Table 22. Place and prevalence of alcohol use – continued (Responses of youth who report recent use of alcohol) -- continued**

Questions & Responses	Grade / Year														
	Grade 7-8					Grade 9-10					Grade 11-12				
	2005	2007	2009	2011	2013	2005	2007	2009	2011	2013	2005	2007	2009	2011	2013
	%	%	%	%	%	%	%	%	%	%	%	%	%	%	%
At a party with adults present who are NOT aware of underage drinking															
1-2 times	**	**	8.3	13.4	0.0	**	**	40.3	29.6	15.6	**	**	29.3	28.4	41.5
3-5 times	**	**	4.2	0.0	0.0	**	**	11.1	6.3	13.7	**	**	12.2	13.6	18.5
At a party without an adult present															
1-2 times	**	**	12.5	0.0	0.0	**	**	32.4	22.7	40.2	**	**	42.9	31.7	41.5
3-5 times	**	**	12.5	6.7	0.0	**	**	26.8	6.0	18.1	**	**	31.3	20.9	18.5

\* Less than 1% \*\* Data not collected. † Percents reported for 2005, 2007 are corrected to reflect only lifetime alcohol users..

**Table 23. Perceived harm of substance use**

Questions & Responses	Grade / Year														
	Grade 7-8					Grade 9-10					Grade 11-12				
	2005**	2007**	2009	2011	2013	2005**	2007**	2009	2011	2013	2005**	2007**	2009	2011	2013
	%	%	%	%	%	%	%	%	%	%	%	%	%	%	%
How much do you think people risk harming themselves if they:															
Smoke cigarettes regularly															
No risk	1.5	0.7	2.3	0.9	3.0	0.4	0.7	1.5	0.7	2.1	0.0	0.7	1.1	1.5	1.7
Very little risk	2.2	0.3	7.6	6.5	4.6	1.5	1.4	7.0	4.5	5.3	2.0	0.7	7.9	5.0	6.2
Some risk	17.5	10.8	19.9	14.0	15.8	17.4	12.6	24.3	25.8	18.2	15.5	17.9	24.5	24.8	18.9
A lot of risk	78.9	88.1	70.1	78.6	76.5	81.9	86.9	67.3	69.0	74.4	82.6	80.7	66.4	68.6	73.2
Use marijuana regularly															
No risk	1.5	1.0	3.3	0.9	5.9	0.4	1.7	7.0	7.1	11.0	4.6	6.7	15.8	18.2	26.2
Very little risk	1.5	0.7	7.7	7.5	12.3	4.9	6.6	18.1	21.9	20.9	12.4	13.1	33.3	29.9	34.5
Some risk	7.7	4.6	19.9	14.6	27.2	14.9	17.1	26.7	28.8	33.5	24.0	26.5	30.8	26.8	23.4
A lot of risk	86.8	90.5	69.1	77.0	54.6	78.5	74.2	48.1	42.2	34.6	59.3	54.1	20.1	25.1	15.9
Use alcohol regularly															
No risk	2.2	0.7	6.2	2.2	**	1.1	1.4	5.9	3.2	**	0.8	1.1	10.6	5.5	**
Very little risk	8.7	4.9	16.9	13.4	**	6.4	7.3	24.4	21.5	**	8.9	9.3	24.5	25.0	**
Some risk	24.0	29.4	38.0	33.2	**	36.0	33.7	42.8	39.1	**	39.5	42.5	39.2	40.7	**
A lot of risk	65.8	64.0	38.9	51.2	**	56.2	57.0	26.9	36.2	**	51.1	47.8	25.6	28.8	**

**Table 23. Perceived harm of substance use, continued**

Questions & Responses	Grade / Year														
	Grade 7-8					Grade 9-10					Grade 11-12				
	2005**	2007**	2009	2011	2013	2005**	2007**	2009	2011	2013	2005**	2007**	2009	2011	2013
	%	%	%	%	%	%	%	%	%	%	%	%	%	%	%
How much do you think people risk harming themselves if they: Take 1-2 drinks of alcoholic beverage nearly every day															
No risk	**	**	**	**	4.0	**	**	**	**	3.2	**	**	**	**	3.6
Very little risk	**	**	**	**	13.5	**	**	**	**	16.1	**	**	**	**	16.1
Some risk	**	**	**	**	30.7	**	**	**	**	39.1	**	**	**	**	44.7
A lot of risk	**	**	**	**	51.9	**	**	**	**	41.6	**	**	**	**	35.6
Take 5 or more drinks of alcoholic beverage 1-2 times each week															
No risk	**	**	**	**	3.7	**	**	**	**	3.1	**	**	**	**	3.1
Very little risk	**	**	**	**	11.1	**	**	**	**	10.6	**	**	**	**	16.6
Some risk	**	**	**	**	24.8	**	**	**	**	36.4	**	**	**	**	40.5
A lot of risk	**	**	**	**	60.5	**	**	**	**	49.9	**	**	**	**	39.7

\* Less than 1% \*\* Response "I don't know" not included in percents.

**Table 24. Peer use of substances**

Questions & Responses	Grade / Year														
	Grade 7-8					Grade 9-10					Grade 11-12				
	2005	2007	2009	2011	2013	2005	2007	2009	2011	2013	2005	2007	2009	2011	2013
	%	%	%	%	%	%	%	%	%	%	%	%	%	%	%
How many of your close friends: Smoke cigarettes?															
None	82.0	90.9	83.4	88.1	91.8	63.5	65.0	57.0	66.4	75.4	33.5	37.5	34.1	45.8	55.7
A few	14.8	6.8	**	**	**	26.2	23.6	**	**	**	33.5	33.8	**	**	**
Some	2.5	2.0	16.0	10.9	7.6	7.4	9.4	36.6	30.8	23.1	17.7	16.0	44.8	45.9	39.8
Most	*	*	*	0.9	0.6	3.0	2.0	6.4	2.7	1.5	15.4	12.7	21.1	8.2	4.5
Drink alcoholic beverages?															
None	75.0	83.2	76.2	81.4	86.2	39.1	29.2	35.1	43.0	46.3	10.9	9.1	9.6	13.4	19.4
A few	18.3	12.3	**	**	**	21.4	25.5	**	**	**	19.5	17.8	**	**	**
Some	3.5	3.1	22.3	15.5	12.6	18.1	19.1	39.6	43.5	41.1	15.4	19.6	41.1	44.7	49.2
Most	3.2	1.1	1.5	3.1	1.2	21.4	26.2	25.3	13.5	12.6	54.1	53.5	49.3	41.8	31.4

**Table 25. Peer use of substances -- continued**

Questions & Responses	Grade / Year														
	Grade 7-8					Grade 9-10					Grade 11-12				
	2005	2007	2009	2011	2013	2005	2007	2009	2011	2013	2005	2007	2009	2011	2013
	%	%	%	%	%	%	%	%	%	%	%	%	%	%	%
Use marijuana?															
None	85.1	92.9	85.8	86.7	84.8	54.5	52.9	51.7	51.1	48.6	25.7	20.4	19.1	20.7	25.7
A few	12.1	5.1	**	**	**	20.7	23.4	**	**	**	25.7	33.2	**	**	**
Some	1.4	1.4	13.9	11.5	12.4	12.4	15.8	33.1	36.7	38.3	27.2	27.4	47.9	49.5	44.9
Most	1.4	*	*	1.9	2.8	12.4	7.9	15.2	12.2	13.1	21.5	19.0	33.0	29.8	29.3
Use inhalants?															
None	88.7	95.3	90.2	90.4	93.0	85.9	88.9	88.7	89.1	93.2	80.5	82.4	81.8	87.5	90.2
A few	6.7	4.1	**	**	**	11.1	8.8	**	**	**	12.4	15.0	**	**	**
Some	3.9	*	9.5	8.7	6.4	2.2	1.7	10.6	10.5	6.1	4.9	2.6	17.5	12.5	8.2
Most	*	*	*	0.9	0.6	*	*	*	0.3	0.7	2.3	*	*	0.0	1.6
Have tried a drug like cocaine, LSD, or heroin?															
None	91.5	95.9	93.8	93.5	93.2	82.6	81.1	79.2	84.5	87.0	63.5	61.5	68.3	70.8	72.9
A few	7.7	2.4	**	**	**	11.5	15.8	**	**	**	24.4	29.1	**	**	**
Some	*	1.4	5.9	6.2	6.1	4.8	1.3	17.8	13.8	11.3	5.3	7.3	27.6	28.0	24.3
Most	*	*	*	0.3	0.6	1.1	1.7	3.0	1.7	1.7	6.8	2.2	4.1	1.2	2.8
Have used prescription drugs without their own prescription?															
None	**	**	94.0	87.3	94.1	**	**	78.0	80.6	87.7	**	**	61.9	70.1	71.4
Some	**	**	6.0	11.2	5.2	**	**	19.3	17.7	11.6	**	**	33.2	28.3	25.4
Most	**	**	*	1.6	0.6	**	**	2.7	1.7	0.7	**	**	4.9	1.7	3.3
Have played games for money, like poker?															
None	**	**	74.1	81.3	79.7	**	**	51.7	67.1	76.8	**	**	52.6	63.1	62.3
Some	**	**	21.1	15.0	17.0	**	**	37.0	27.7	18.5	**	**	38.1	29.2	31.0
Most	**	**	4.8	3.7	3.4	**	**	11.3	5.3	4.7	**	**	9.3	7.6	6.7

\* Less than 1% \*\* Data not collected.

**Table 26. Social supports**

Questions & Responses	Grade / Year														
	Grade 7-8					Grade 9-10					Grade 11-12				
	2005	2007	2009	2011	2013	2005	2007	2009	2011	2013	2005	2007	2009	2011	2013
	%	%	%	%	%	%	%	%	%	%	%	%	%	%	%
<u>When you have a problem that bothers you, how often do you talk about it with:</u>															
Parents or guardians															
Almost never	25.4	22.7	19.3	16.5	17.8	20.7	25.0	26.9	26.5	17.7	30.3	23.9	25.7	27.9	27.7
Sometimes	39.7	36.9	33.9	33.3	32.7	43.9	42.0	37.3	34.4	40.0	40.8	44.1	42.9	37.1	43.0
Often	18.8	24.1	25.0	26.8	29.1	25.5	21.9	23.8	25.3	24.7	20.6	21.3	19.4	21.2	17.3
Almost always	16.0	16.3	21.7	23.4	20.4	10.0	11.1	11.9	13.8	17.7	8.2	10.7	11.9	13.9	12.0
A relative other than parent															
Almost never	54.2	51.0	51.2	41.1	48.6	56.6	64.2	61.2	55.0	49.4	67.8	64.7	63.1	63.2	66.8
Sometimes	29.7	33.0	29.2	38.3	36.2	29.8	25.7	31.2	32.9	34.6	24.3	26.1	27.2	24.5	26.1
Often	12.9	8.8	13.4	11.9	8.8	11.8	7.6	6.5	8.9	12.0	6.4	7.4	8.2	8.8	4.6
Almost always	3.1	7.1	6.3	8.8	6.4	1.8	2.4	1.2	3.2	4.0	1.5	1.8	1.5	3.5	2.5
A teacher															
Almost never	66.3	66.6	59.4	57.0	57.2	72.8	76.3	79.6	71.5	62.3	73.4	77.9	78.0	74.5	65.6
Sometimes	26.0	26.0	29.9	32.4	30.5	24.3	19.9	18.5	22.5	30.6	23.6	20.3	19.0	18.9	29.2
Often	6.0	4.4	7.2	8.1	9.8	1.8	2.8	1.5	4.6	4.8	2.6	1.8	3.0	4.1	4.3
Almost always	1.8	3.0	3.6	2.5	2.4	1.1	1.0	0.4	1.4	2.3	0.4	0.0	0.0	2.5	0.9
A mentor															
Almost never	**	**	73.1	66.9	62.5	**	**	73.6	77.3	58.4	**	**	73.1	69.3	69.6
Sometimes	**	**	16.1	20.9	27.4	**	**	21.7	16.5	29.2	**	**	20.1	20.7	20.1
Often	**	**	6.9	9.1	5.2	**	**	3.5	4.2	8.0	**	**	4.5	5.9	7.3
Almost always	**	**	3.9	3.1	5.0	**	**	1.2	2.0	4.4	**	**	2.2	4.2	2.9
An adult who is not family or a teacher															
Almost never	71.1	68.4	72.8	65.6	70.7	66.1	73.9	72.5	72.0	64.0	60.8	57.2	61.2	67.7	66.7
Sometimes	21.6	22.8	16.5	23.4	19.8	28.4	17.1	20.2	19.1	26.8	28.7	32.8	28.7	21.8	27.4
Often	4.9	5.1	7.8	8.1	7.0	3.7	8.0	6.6	6.0	6.6	7.9	8.1	9.0	8.1	3.4
Almost always	2.4	3.4	3.0	2.8	2.5	1.8	1.0	0.8	3.0	2.6	2.6	1.8	1.1	2.4	2.6

**Table 26. Social supports -- continued**

Questions & Responses	Grade / Year														
	Grade 7-8					Grade 9-10					Grade 11-12				
	2005	2007	2009	2011	2013	2005	2007	2009	2011	2013	2005	2007	2009	2011	2013
	%	%	%	%	%	%	%	%	%	%	%	%	%	%	%
<u>When you have a problem that bothers you, how often do you talk about it with:</u>															
A brother or sister															
Almost never	49.3	44.2	35.2	37.5	46.7	38.9	36.7	36.9	39.4	41.4	44.7	33.8	40.3	42.1	37.3
Sometimes	30.6	27.6	30.7	33.4	28.3	28.9	36.7	29.2	27.9	32.9	30.5	40.2	37.3	26.4	36.7
Often	14.1	16.0	19.1	18.1	14.1	21.9	18.0	20.4	23.3	15.8	17.7	16.9	12.7	18.9	17.0
Almost always	6.0	12.2	14.9	10.9	11.0	10.4	8.5	13.5	9.3	9.9	7.1	9.0	9.7	12.7	9.1
A friend															
Almost never	13.6	10.3	13.1	10.9	11.1	8.1	5.6	8.9	8.4	7.9	6.4	4.1	2.2	6.4	7.4
Sometimes	30.1	25.0	21.1	24.3	25.5	21.0	20.2	19.4	19.9	23.1	24.3	20.4	23.5	15.7	22.1
Often	31.1	25.7	31.8	29.6	28.0	39.1	36.9	32.9	29.0	26.5	32.2	37.4	32.5	33.1	33.5
Almost always	25.2	39.0	33.9	35.2	35.4	31.7	37.3	38.8	42.7	42.5	37.1	38.1	41.8	44.9	37.0
Nobody. I keep it to myself.															
Almost never	19.6	23.5	27.2	27.1	21.7	14.3	13.6	15.4	14.2	14.2	11.6	11.8	12.4	10.6	14.1
Sometimes	45.5	40.8	43.3	36.1	36.2	43.0	42.2	39.4	45.5	43.0	41.6	47.8	41.9	37.4	33.8
Often	20.6	22.4	20.9	21.2	22.1	25.4	31.0	30.5	24.2	28.2	32.2	29.4	27.0	30.4	31.4
Almost always	14.3	13.3	8.7	15.6	20.0	17.3	13.2	14.7	16.1	14.6	14.6	11.0	18.7	21.6	20.7

\*\* Data not collected.

**Table 27. Antisocial behavior**

Questions & Responses	Grade / Year														
	Grade 7-8					Grade 9-10					Grade 11-12				
	2005	2007	2009	2011	2013	2005	2007	2009	2011	2013	2005	2007	2009	2011	2013
In the past year, I have:	%	%	%	%	%	%	%	%	%	%	%	%	%	%	%
Stolen something worth less than \$50	11.5	14.2	8.6	8.4	13.1	24.7	20.8	19.2	14.3	11.3	25.5	26.6	30.4	21.2	18.6
Gotten suspended or expelled from school	7.0	5.7	3.9	2.5	4.0	4.8	2.7	3.4	5.2	0.4	4.1	3.3	5.9	3.7	2.9
Gotten into trouble with the Police	5.6	10.1	8.9	5.3	4.2	7.4	8.5	10.6	9.4	5.9	13.1	16.1	17.3	14.7	10.0
Picked a fight (not with a family member)	17.8	20.8	15.4	18.6	13.8	21.0	18.2	25.8	15.3	11.0	18.0	18.2	22.5	17.0	11.0
Attacked someone to seriously hurt them	4.9	5.7	8.9	11.5	8.0	4.4	5.1	13.2	6.5	7.5	6.4	4.4	11.4	7.4	2.7
Cheated on a test	22.4	26.0	19.9	19.9	15.4	36.5	50.2	36.6	30.1	22.9	43.4	49.5	51.9	44.1	33.4
Sold illegal drugs	0.7	1.0	0.9	0.0	0.3	4.4	2.7	5.3	2.0	2.8	10.9	9.2	8.9	11.0	5.1
Bought illegal drugs	3.2	1.0	1.8	1.2	1.5	12.1	7.5	12.5	7.4	7.6	19.9	19.4	29.2	27.0	25.5
Purposely damaged another's property	10.9	11.1	12.5	9.9	7.4	16.5	14.0	18.5	14.4	6.3	15.8	16.8	18.5	17.3	14.1
Carried a weapon	11.2	12.8	11.9	11.5	10.4	15.1	9.9	12.1	10.7	6.7	12.4	14.3	14.0	16.7	9.0
Brought a weapon to school	1.7	3.0	2.1	3.4	0.9	3.0	1.0	3.0	2.0	2.4	3.7	4.7	4.8	3.2	1.3
Gotten arrested	1.4	0.7	1.8	0.9	1.2	1.8	1.7	3.4	1.3	1.7	4.5	5.1	7.0	6.3	2.4
Played games for money, like poker	**	**	15.7	11.9	9.8	**	**	23.4	14.6	11.1	**	**	24.9	21.7	14.7
Placed bets on-line	**	**	3.0	2.8	3.4	**	**	7.6	1.6	2.2	**	**	3.0	4.2	1.7
Played scratch tickets for money	**	**	22.0	24.2	25.6	**	**	22.3	20.6	18.5	**	**	27.8	26.3	23.5
Ridden as passenger with driver using alcohol	**	**	12.5	11.6	11.1	**	**	23.4	15.4	9.5	**	**	34.4	24.8	15.8
Ridden as passenger with driver using drugs	**	**	5.6	2.8	2.8	**	**	17.8	6.4	6.5	**	**	33.9	26.0	19.8

\*\* Data not collected.

**Table 28. Attitudes toward antisocial behavior**

Questions & Responses	Grade / Year														
	Grade 7-8					Grade 9-10					Grade 11-12				
	2005	2007	2009	2011	2013	2005	2007	2009	2011	2013	2005	2007	2009	2011	2013
	%	%	%	%	%	%	%	%	%	%	%	%	%	%	%
How wrong do you think it is for someone your age to:															
Drink alcoholic beverages															
Not at all wrong	4.0	1.5	4.8	3.1	2.4	11.0	10.5	21.9	12.7	11.0	27.8	28.9	41.2	28.8	26.2
Somewhat wrong	13.2	13.9	16.1	18.0	12.3	39.8	45.1	39.2	28.6	36.9	47.0	50.6	39.3	49.3	39.8
Wrong	36.8	29.3	**	**	**	26.5	26.9	**	**	**	15.8	16.7	**	**	**
Very wrong	46.0	55.3	79.1	78.9	85.3	22.7	17.5	38.8	58.7	52.1	9.4	3.8	19.5	21.9	34.0
Smoke cigarettes															
Not at all wrong	1.8	0.7	2.7	2.8	1.5	6.1	5.8	11.9	6.6	5.5	17.7	20.9	21.0	13.5	10.1
Somewhat wrong	7.7	4.8	12.5	7.8	8.9	17.9	15.3	28.8	24.2	20.3	31.7	32.7	40.4	39.4	31.0
Wrong	28.2	23.4	**	**	**	40.3	42.3	**	**	**	30.9	30.0	**	**	**
Very wrong	62.3	71.1	84.8	89.4	89.6	35.7	36.5	59.2	69.1	74.2	19.6	16.3	38.6	47.1	58.9
Use marijuana															
Not at all wrong	1.8	1.1	3.0	3.1	4.0	7.2	6.6	17.7	12.7	13.7	17.4	16.8	32.5	31.3	36.7
Somewhat wrong	5.9	2.6	9.3	9.0	8.4	14.8	15.7	25.8	23.7	30.8	29.1	31.3	37.7	37.2	27.8
Wrong	16.5	17.2	**	**	**	27.4	27.4	**	**	**	27.9	28.6	**	**	**
Very wrong	75.8	79.1	87.7	87.8	87.6	50.6	50.4	56.5	63.6	55.5	25.7	23.3	29.9	31.6	35.5
Purposely damage property that does not belong to them															
Not at all wrong	1.5	1.5	2.1	2.5	1.8	1.5	1.8	5.0	4.6	2.6	2.6	1.1	3.4	2.9	3.7
Somewhat wrong	8.8	7.0	21.0	13.1	16.0	8.0	9.2	30.7	27.3	19.4	6.8	7.2	29.1	25.8	23.0
Wrong	28.3	31.9	**	**	**	35.6	34.8	**	**	**	34.2	40.3	**	**	**
Very wrong	61.4	59.7	76.9	84.4	82.1	54.9	54.2	64.4	68.1	78.0	56.4	51.3	67.5	71.3	73.3
Carry a knife, gun or other weapon															
Not at all wrong	4.4	5.5	5.7	5.6	4.9	4.9	7.7	7.7	8.8	6.5	6.1	6.1	11.2	12.0	7.8
Somewhat wrong	8.4	10.7	11.9	10.9	11.3	10.2	13.2	21.8	19.3	15.8	12.5	13.6	19.8	20.7	14.5
Wrong	24.5	23.9	**	**	**	28.4	24.5	**	**	**	29.5	35.2	**	**	**
Very wrong	62.6	59.9	82.4	83.5	83.8	56.4	54.6	70.5	71.9	77.6	51.9	45.1	69.0	67.3	77.8
Steal something worth less than \$100															
Not at all wrong	1.8	2.6	3.9	2.8	3.1	1.1	1.5	8.0	4.5	2.6	2.3	1.5	6.7	4.6	3.7
Somewhat wrong	3.3	8.6	20.8	20.5	24.3	3.1	16.8	36.4	37.6	32.1	4.1	13.7	44.0	38.2	30.4
Wrong	17.6	30.9	**	**	**	22.1	42.1	**	**	**	22.6	46.6	**	**	**
Very wrong	77.3	58.0	75.3	76.7	72.6	73.7	39.6	55.6	57.9	65.3	71.1	38.2	49.3	57.2	65.9



**Table 28. Attitudes toward antisocial behavior -- continued**

Questions & Responses	Grade / Year														
	Grade 7-8					Grade 9-10					Grade 11-12				
	2005	2007	2009	2011	2013	2005	2007	2009	2011	2013	2005	2007	2009	2011	2013
	%	%	%	%	%	%	%	%	%	%	%	%	%	%	%
How wrong do you think it is for someone your age to:															
Pick a fight with someone (not family)															
Not at all wrong	1.9	5.1	7.7	6.2	4.3	1.1	7.7	12.6	9.2	5.9	2.6	3.1	9.0	8.0	7.0
Somewhat wrong	8.2	17.6	29.5	29.0	27.6	11.8	23.8	50.6	42.1	36.1	10.5	24.4	56.7	43.6	36.4
Wrong	36.8	33.5	**	**	**	43.3	33.7	**	**	**	49.2	47.7	**	**	**
Very wrong	53.2	43.8	62.8	64.8	68.1	43.7	34.8	36.8	48.7	58.0	37.6	24.8	34.3	48.5	56.6
Attack someone to hurt them															
Not at all wrong	5.5	2.2	3.0	3.1	2.4	7.2	2.2	5.0	4.9	3.3	4.2	1.1	4.5	3.6	3.4
Somewhat wrong	22.0	4.4	12.9	13.1	11.1	21.7	8.1	24.6	22.3	17.3	21.1	6.5	23.9	20.9	12.8
Wrong	30.8	24.4	**	**	**	40.3	28.8	**	**	**	46.0	35.6	**	**	**
Very wrong	41.8	69.0	84.1	83.8	86.4	30.8	60.9	70.4	72.8	79.4	28.7	56.7	71.6	75.5	83.8
Use inhalants															
Not at all wrong	1.1	0.7	3.0	2.8	1.8	2.3	2.2	5.7	5.5	4.1	2.3	1.1	4.9	3.4	3.7
Somewhat wrong	6.3	4.8	7.8	10.6	7.1	4.9	8.5	20.7	12.2	11.6	6.8	8.4	25.0	23.3	15.9
Wrong	23.3	23.4	**	**	**	26.6	27.2	**	**	**	32.7	37.3	**	**	**
Very wrong	69.3	71.1	89.3	86.6	91.1	66.2	62.1	73.6	82.3	84.3	58.3	53.2	70.1	73.2	80.5
Cheat on a test at school															
Not at all wrong	3.7	3.3	4.5	4.4	3.7	7.6	8.9	10.7	7.9	7.3	8.6	11.4	20.9	10.3	13.9
Somewhat wrong	19.0	17.2	32.2	31.0	29.0	24.3	39.5	58.2	49.5	42.4	28.6	37.3	56.7	58.1	45.2
Wrong	36.3	38.8	**	**	**	42.6	32.8	**	**	**	44.0	37.6	**	**	**
Very wrong	41.0	40.7	63.3	64.7	67.3	25.5	18.8	31.0	42.6	50.3	18.8	13.7	22.4	31.6	40.9
Drink and drive															
Not at all wrong	2.2	0.7	2.4	2.8	2.7	1.1	1.8	3.8	2.9	2.6	2.6	1.5	2.6	2.2	2.8
Somewhat wrong	1.5	0.7	3.6	3.1	3.7	2.7	2.2	8.8	10.3	7.4	1.9	3.4	13.4	9.2	7.4
Wrong	16.5	13.6	**	**	**	14.0	16.8	**	**	**	16.6	12.5	**	**	**
Very wrong	79.9	85.0	94.0	94.1	93.6	82.2	79.1	87.4	86.8	90.1	78.9	82.5	84.0	88.6	89.9

**Table 28. Attitudes toward antisocial behavior -- continued**

Questions & Responses	Grade / Year														
	Grade 7-8					Grade 9-10					Grade 11-12				
	2005	2007	2009	2011	2013	2005	2007	2009	2011	2013	2005	2007	2009	2011	2013
How wrong do you think it is for someone your age to:	%	%	%	%	%	%	%	%	%	%	%	%	%	%	%
Play games for money, like poker															
Not at all wrong	**	**	15.0	10.9	12.6	**	**	38.1	25.4	20.6	**	**	45.1	34.3	31.4
Somewhat wrong	**	**	36.8	34.9	28.2	**	**	42.3	44.1	34.6	**	**	39.2	35.4	37.2
Wrong	**	**	**	**	**	**	**	**	**	**	**	**	**	**	**
Very wrong	**	**	48.2	54.2	59.2	**	**	19.6	30.6	44.9	**	**	15.7	30.2	31.4
Place bets on-line															
Not at all wrong	**	**	10.1	10.3	8.8	**	**	26.9	19.1	14.6	**	**	33.0	24.4	21.4
Somewhat wrong	**	**	28.1	30.5	27.0	**	**	44.2	42.0	36.1	**	**	43.8	38.8	43.6
Wrong	**	**	**	**	**	**	**	**	**	**	**	**	**	**	**
Very wrong	**	**	61.8	59.2	64.1	**	**	28.8	38.9	49.3	**	**	23.2	36.8	35.0
Play scratch tickets for money															
Not at all wrong	**	**	22.4	24.9	22.1	**	**	37.5	33.0	28.5	**	**	55.6	44.1	42.9
Somewhat wrong	**	**	31.9	30.4	30.6	**	**	40.6	36.1	36.2	**	**	29.7	33.3	31.1
Wrong	**	**	**	**	**	**	**	**	**	**	**	**	**	**	**
Very wrong	**	**	45.7	44.7	47.3	**	**	21.8	30.9	35.3	**	**	14.7	22.6	26.0
Gamble or place bets															
Not at all wrong	8.8	7.4	**	**	**	18.6	12.5	**	**	**	27.4	19.4	**	**	**
Somewhat wrong	21.0	18.4	**	**	**	25.9	27.9	**	**	**	32.7	34.6	**	**	**
Wrong	22.8	28.3	**	**	**	30.4	29.8	**	**	**	28.6	30.0	**	**	**
Very wrong	47.4	46.0	**	**	**	25.1	29.8	**	**	**	11.3	16.0	**	**	**
Talk on the phone while driving															
Not at all wrong	**	**	**	**	5.5	**	**	**	**	5.5	**	**	**	**	10.7
Somewhat wrong	**	**	**	**	26.6	**	**	**	**	35.4	**	**	**	**	50.9
Very wrong	**	**	**	**	67.9	**	**	**	**	59.1	**	**	**	**	38.5
Text while driving															
Not at all wrong	**	**	**	**	3.1	**	**	**	**	3.3	**	**	**	**	6.1
Somewhat wrong	**	**	**	**	19.9	**	**	**	**	21.1	**	**	**	**	24.9
Very wrong	**	**	**	**	77.1	**	**	**	**	75.6	**	**	**	**	69.0

\*\* Data not collected.

**Table 29. How youth report spending time after school**

Questions & Responses	Grade / Year														
	Grade 7-8					Grade 9-10					Grade 11-12				
	2005	2007	2009	2011	2013	2005	2007	2009	2011	2013	2005	2007	2009	2011	2013
	%	%	%	%	%	%	%	%	%	%	%	%	%	%	%
How many hours a day do you usually spend doing homework?															
None	1.9	1.3	2.1	0.6	1.8	3.2	1.9	2.6	2.7	1.7	10.0	7.4	5.4	4.6	5.5
Less than 1 hour	28.7	16.3	32.4	27.6	30.4	18.1	9.4	32.5	30.4	26.4	21.2	19.7	43.8	33.6	26.9
1-3 hours	68.6	68.6	61.8	64.9	62.6	77.1	81.9	59.1	58.0	60.3	60.6	66.8	45.3	48.7	45.7
More than 3 hours	0.8	0.8	3.8	6.8	**	4.6	6.8	5.8	9.0	**	8.3	6.2	5.4	13.0	**
3-5 hours	**	**	**	**	4.0	**	**	**	**	9.2	**	**	**	**	15.6
More than 5 hours	**	**	**	**	1.2	**	**	**	**	2.4	**	**	**	**	6.3
Exercising, working out, or playing sports															
None	3.1	3.4	25.0	23.1	10.5	5.1	6.1	35.4	41.6	11.2	9.0	8.8	55.4	50.6	14.7
1-2 hours	23.5	17.4	28.0	30.0	39.5	19.5	17.2	17.2	15.8	33.9	19.5	24.8	8.7	10.9	38.5
3-6 hours	24.9	32.6	25.6	23.1	26.9	17.6	19.5	15.7	9.8	26.8	22.2	18.6	9.4	8.8	27.0
7 hours or more	48.4	46.3	21.4	23.7	23.1	57.7	57.2	31.8	32.8	28.1	49.2	47.7	26.4	29.7	19.8
Playing or practicing organized sports															
None	**	**	**	**	25.4	**	**	**	**	34.5	**	**	**	**	52.9
1-2 hours	**	**	**	**	18.3	**	**	**	**	16.7	**	**	**	**	11.5
3-6 hours	**	**	**	**	27.9	**	**	**	**	14.2	**	**	**	**	10.1
7 hours or more	**	**	**	**	28.4	**	**	**	**	34.5	**	**	**	**	25.5
In clubs (like school clubs, scouts, boys/girls club)															
None	68.5	56.6	68.2	52.0	57.6	58.7	52.5	66.3	54.9	50.1	43.8	55.6	56.4	61.4	54.6
1-2 hours	21.3	29.6	22.6	34.6	30.6	23.2	30.3	18.3	31.3	33.6	36.2	30.9	30.0	26.4	28.3
3-6 hours	8.4	9.8	7.4	9.3	7.6	10.3	8.4	9.2	10.3	9.3	11.7	8.4	9.9	8.8	13.7
7 hours or more	1.7	4.1	1.8	4.1	4.3	7.8	8.8	6.2	3.6	7.1	8.3	5.1	3.7	3.4	3.4
Watching TV															
None	3.5	2.3	7.9	8.7	11.7	2.2	2.4	8.1	8.7	12.8	9.1	4.7	6.5	12.1	18.4
1-2 hours	23.2	23.5	43.7	44.7	53.2	21.2	24.2	44.0	45.3	42.1	25.7	21.2	38.5	47.9	39.4
3-6 hours	32.4	35.2	29.9	30.9	23.8	30.9	30.3	36.6	30.0	31.0	33.2	27.0	33.5	28.4	27.7
7 hours or more	40.9	38.9	18.5	15.6	11.3	45.7	43.1	11.4	16.0	14.1	32.1	47.1	21.5	11.7	14.6
Reading books, magazines or newspapers															
None	17.6	15.4	27.5	13.6	15.2	15.0	15.6	24.5	31.7	36.0	17.2	19.3	30.5	38.1	34.9
1-2 hours	49.6	52.2	48.5	57.3	56.9	46.2	46.1	54.0	47.4	45.3	45.8	51.1	46.5	44.8	48.5
3-6 hours	21.5	20.5	16.9	24.4	20.2	26.7	25.1	16.4	16.4	13.7	23.7	17.9	18.5	14.9	11.3
7 hours or more	11.2	11.9	7.1	4.7	7.7	12.0	13.3	5.1	4.5	5.0	14.4	11.7	4.4	2.2	5.3

**Table 29. How youth report spending time after school -- continued**

Questions & Responses	Grade / Year														
	Grade 7-8					Grade 9-10					Grade 11-12				
	2005	2007	2009	2011	2013	2005	2007	2009	2011	2013	2005	2007	2009	2011	2013
	%	%	%	%	%	%	%	%	%	%	%	%	%	%	%
<u>How many hours a week do you usually spend:</u>															
Hanging out with friends in public areas															
None	27.9	32.8	27.5	23.1	21.9	14.6	18.2	14.2	18.1	20.1	7.7	12.1	9.8	10.5	15.5
1-2 hours	29.7	31.1	42.9	43.6	44.5	35.8	32.0	48.0	45.2	43.7	31.4	32.7	36.7	42.4	39.3
3-6 hours	30.4	23.5	20.7	24.3	25.0	31.0	35.4	26.5	25.0	26.3	35.2	27.9	29.8	31.0	29.9
7 hours or more	12.0	12.6	8.9	9.0	8.5	18.7	14.5	11.3	11.8	9.8	25.7	27.2	23.6	16.0	15.3
Working at a paying job															
None	47.7	56.5	54.1	61.3	66.0	42.4	46.5	50.2	58.0	54.7	23.1	24.0	30.5	31.7	32.3
1-2 hours	26.1	25.9	28.5	29.6	24.2	20.7	18.7	28.4	29.6	29.1	6.8	8.0	15.6	21.3	19.9
3-6 hours	16.0	12.6	14.4	7.6	6.4	21.0	22.4	18.5	10.1	11.9	13.6	17.5	17.1	19.8	18.9
7 hours or more	10.1	4.7	2.9	1.6	3.4	15.8	12.3	2.9	2.4	4.3	56.4	50.5	36.7	27.2	28.8
Helping around the house															
None	16.1	13.9	10.6	12.1	13.2	8.8	11.1	12.0	11.6	11.9	10.9	13.2	11.3	10.8	11.4
1-2 hours	61.9	59.0	53.4	56.0	57.4	57.0	58.7	56.2	56.8	57.8	56.2	62.6	61.1	59.9	58.7
3-6 hours	16.1	20.0	28.9	24.5	21.5	26.8	24.2	25.9	24.1	20.6	26.0	17.6	22.5	22.3	25.1
7 hours or more	5.9	7.1	7.1	7.4	7.9	7.3	6.0	5.8	7.5	9.7	6.8	6.6	5.1	7.0	4.8
Doing volunteer work															
None	66.9	64.0	54.9	51.7	51.8	55.7	54.2	59.5	50.5	46.5	44.5	52.2	53.3	55.0	44.8
1-2 hours	25.8	28.1	34.2	38.0	38.4	30.3	33.2	31.8	38.1	41.1	36.9	34.3	34.3	31.5	42.3
3-6 hours	3.8	4.1	9.4	9.0	7.3	10.0	7.1	6.9	8.8	9.7	12.9	7.7	6.9	10.7	10.9
7 hours or more	3.5	3.7	1.5	1.2	2.4	4.0	5.4	1.8	2.6	2.8	5.6	5.8	5.5	2.8	2.0
In a band, choir, orchestra, or playing a musical instrument															
None	40.2	42.0	46.4	44.3	46.1	56.6	63.0	60.4	67.5	68.2	62.5	72.7	76.4	76.5	71.6
1-2 hours	30.4	32.4	36.6	39.3	38.9	9.6	5.1	14.9	14.7	12.3	7.2	6.6	8.0	9.6	10.6
3-6 hours	21.3	18.4	10.7	12.9	9.5	19.1	16.2	17.1	11.2	14.4	13.6	11.1	9.4	7.8	12.2
7 hours or more	8.0	7.2	6.3	3.5	5.5	14.7	15.8	7.6	6.7	5.1	16.8	9.6	6.2	6.2	5.6
Attending religious services or programs															
None	39.2	41.2	45.1	47.5	46.9	50.9	54.0	62.4	63.9	60.2	55.8	65.9	72.4	71.4	67.2
1-2 hours	44.8	45.3	47.8	45.0	44.9	35.1	34.2	33.9	32.6	34.1	32.1	26.1	22.9	25.4	29.2
3-6 hours	13.9	10.8	5.0	5.9	6.7	12.2	8.7	2.6	3.5	5.4	10.2	6.5	3.6	2.3	2.8
7 hours or more	2.0	2.7	2.1	1.6	1.5	1.8	3.0	1.1	0.0	0.3	1.9	1.4	1.1	1.0	0.9

**Table 29. How youth report spending time after school -- continued**

Questions & Responses	Grade / Year														
	Grade 7-8					Grade 9-10					Grade 11-12				
	2005	2007	2009	2011	2013	2005	2007	2009	2011	2013	2005	2007	2009	2011	2013
	%	%	%	%	%	%	%	%	%	%	%	%	%	%	%
<u>How many hours a week do you usually spend:</u>															
Using a computer unrelated to school															
None	**	**	13.2	8.4	6.7	**	**	3.6	6.1	3.2	**	**	2.2	1.9	3.5
1-2 hours	**	**	37.9	47.2	38.4	**	**	29.9	35.6	29.7	**	**	26.0	30.3	27.7
3-6 hours	**	**	29.1	26.7	28.1	**	**	34.3	31.3	30.8	**	**	37.2	32.2	30.7
7 hours or more	**	**	19.7	17.7	26.9	**	**	32.1	27.0	36.3	**	**	34.7	35.5	38.2
Playing video games															
None	8.7	6.8	42.4	41.1	42.9	8.9	11.4	51.1	50.9	52.7	20.6	14.9	50.7	57.0	55.1
1-2 hours	28.8	31.4	37.1	32.1	31.9	26.6	23.2	25.7	26.5	22.2	25.8	25.8	25.4	23.2	27.6
3-6 hours	29.5	26.0	12.5	15.6	16.4	26.2	26.2	14.7	13.2	13.3	22.1	25.8	13.4	11.0	8.3
7 hours or more	33.1	35.8	8.0	11.2	8.8	38.4	39.2	8.5	9.4	11.8	31.5	33.5	10.5	8.7	9.1
Talking on the telephone															
None	16.4	19.5	30.9	36.6	19.3	21.3	18.0	26.3	40.9	8.6	20.0	13.1	18.8	36.4	9.2
1-2 hours	51.2	46.4	56.5	51.9	45.5	43.4	41.4	50.7	49.7	42.2	39.2	44.0	62.1	47.1	38.7
3-6 hours	20.9	19.5	8.2	7.2	20.9	18.8	24.4	17.2	7.2	24.9	26.4	21.8	13.6	11.5	29.7
7 hours or more	11.5	14.6	4.4	4.4	14.3	16.6	16.3	5.8	2.2	24.3	14.4	21.2	5.5	5.0	22.4
Listening to music															
None	5.6	6.6	12.4	10.5	10.9	2.6	3.4	4.0	4.8	6.1	2.3	1.8	3.3	2.7	4.7
1-2 hours	31.4	25.2	40.3	44.1	43.3	18.8	21.9	34.1	36.6	39.6	16.5	19.3	31.9	32.3	29.4
3-6 hours	25.8	26.2	25.3	24.5	20.0	22.5	22.9	27.8	26.2	26.8	19.9	21.1	31.5	29.6	32.5
7 hours or more	37.2	42.1	22.1	20.8	25.8	56.1	51.9	34.1	32.3	27.4	51.3	57.8	33.3	35.3	33.4

\*\* Data not collected.

**Table 30. Self- concept**

Questions & Responses	Grade / Year														
	Grade 7-8					Grade 9-10					Grade 11-12				
	2005	2007	2009	2011	2013	2005	2007	2009	2011	2013	2005	2007	2009	2011	2013
	%	%	%	%	%	%	%	%	%	%	%	%	%	%	%
<u>How much do you disagree or agree with the following:</u>															
I am good at making friends.															
Strongly disagree	1.4	0.3	4.8	3.7	3.1	0.4	1.1	3.8	3.7	1.8	2.2	0.4	2.2	1.6	2.8
Disagree	2.8	3.4	10.4	10.5	9.1	3.3	3.5	9.2	13.9	10.2	4.5	1.8	8.9	8.2	6.2
Not sure	14.3	9.7	**	**	**	16.2	11.7	**	**	**	12.7	15.4	**	**	**
Agree	48.1	47.7	51.0	48.3	49.6	59.6	52.7	57.6	58.2	54.5	55.1	58.2	61.5	57.2	62.3
Strongly agree	33.4	38.9	33.7	37.5	38.1	20.6	31.1	29.4	24.3	33.5	25.5	24.2	27.4	33.1	28.8
I feel no one understands me.															
Strongly disagree	21.6	31.0	46.1	41.9	28.6	16.5	25.4	33.5	33.8	27.6	18.4	21.5	34.2	29.9	20.9
Disagree	35.5	33.7	38.7	33.1	46.1	44.5	40.3	44.1	47.5	48.7	44.4	44.9	45.7	45.2	55.3
Not sure	26.5	23.1	**	**	**	25.0	22.3	**	**	**	22.6	23.0	**	**	**
Agree	12.5	8.2	12.8	20.3	17.0	10.7	9.9	20.5	13.8	20.7	10.2	9.1	15.6	21.1	17.7
Strongly agree	3.8	4.1	2.4	4.7	8.3	3.3	2.1	1.9	4.9	2.9	4.5	1.5	4.5	3.8	6.0
At times, I think I am no good at all.															
Strongly disagree	29.6	29.7	43.5	38.4	35.8	19.2	23.8	34.7	36.0	29.0	19.1	23.4	37.3	36.3	30.0
Disagree	28.9	26.4	32.7	31.0	25.4	32.1	31.3	37.0	38.3	35.0	33.7	34.8	36.9	36.4	30.9
Not sure	15.3	18.6	**	**	**	17.7	17.4	**	**	**	18.7	16.8	**	**	**
Agree	20.9	17.9	18.2	24.1	29.9	24.0	23.1	25.2	21.7	28.4	21.7	19.0	21.3	23.2	28.6
Strongly agree	5.2	7.4	5.7	6.5	8.9	7.0	4.3	3.1	3.9	7.6	6.7	5.9	4.5	4.1	10.5
I feel lonely.															
Strongly disagree	35.4	37.0	51.2	46.3	42.1	15.3	30.2	36.5	39.8	32.4	18.1	22.4	35.7	30.5	23.5
Disagree	25.6	32.9	33.8	34.8	33.2	35.1	34.5	43.7	40.7	42.7	38.9	40.4	43.5	43.6	41.9
Not sure	14.0	15.1	**	**	**	19.8	16.4	**	**	**	19.2	16.5	**	**	**
Agree	18.6	12.7	12.0	14.6	19.5	24.3	16.0	17.1	14.9	21.6	19.2	16.2	17.8	20.4	27.8
Strongly agree	6.3	2.4	3.0	4.3	5.3	5.6	2.8	2.7	4.6	3.3	4.5	4.4	3.0	5.4	6.8
I am good at making decisions.															
Strongly disagree	2.1	2.4	5.1	3.7	5.2	0.7	2.2	4.6	2.9	4.4	1.1	2.6	3.3	5.0	4.9
Disagree	3.9	4.4	10.7	9.3	13.2	8.9	4.7	11.8	13.8	13.0	7.3	7.3	11.9	13.7	9.7
Not sure	19.3	16.6	**	**	**	17.8	16.5	**	**	**	14.5	17.2	**	**	**
Agree	52.3	47.3	54.8	51.3	48.0	55.6	56.3	60.8	54.2	52.2	60.7	57.5	64.3	54.1	56.6
Strongly agree	22.5	29.4	29.5	35.7	33.6	17.0	20.4	22.8	29.1	30.3	16.4	15.4	20.4	27.2	28.8

**Table 30. Self- concept -- continued**

Questions & Responses	Grade / Year														
	Grade 7-8					Grade 9-10					Grade 11-12				
	2005	2007	2009	2011	2013	2005	2007	2009	2011	2013	2005	2007	2009	2011	2013
	%	%	%	%	%	%	%	%	%	%	%	%	%	%	%
<u>How much do you disagree or agree with the following:</u>															
I feel that no one really cares about me.															
Strongly disagree	48.3	50.9	60.7	56.1	51.4	35.8	45.7	50.0	51.5	44.2	38.0	42.3	51.9	46.2	43.4
Disagree	24.1	28.0	30.1	31.5	34.0	43.5	36.1	40.5	39.0	40.2	40.2	40.1	37.0	39.5	42.3
Not sure	12.6	10.2	**	**	**	11.1	10.7	**	**	**	11.3	8.8	**	**	**
Agree	11.9	8.2	6.8	10.3	8.7	5.2	6.1	8.0	7.5	12.3	8.6	7.3	8.9	11.7	10.0
Strongly agree	3.1	2.7	2.4	2.2	5.8	4.4	1.4	1.5	2.0	3.3	1.9	1.5	2.2	2.5	4.3
I feel I do not have much to be proud of.															
Strongly disagree	39.2	49.5	53.4	50.9	52.0	33.1	43.8	39.5	44.9	43.7	30.8	40.4	47.2	40.6	40.5
Disagree	32.5	26.4	31.9	31.9	27.6	33.5	31.0	44.1	38.8	33.9	42.1	37.5	37.2	37.8	38.9
Not sure	11.9	10.8	**	**	**	11.9	13.9	**	**	**	8.3	9.9	**	**	**
Agree	11.9	10.5	10.4	11.1	14.2	17.8	10.0	13.3	12.9	18.7	14.7	10.7	11.2	17.5	15.5
Strongly agree	4.5	2.7	4.2	6.1	6.2	3.7	1.4	3.0	3.4	3.7	4.1	1.5	4.5	4.1	5.1
I think I have a good sense of humor.															
Strongly disagree	1.4	0.7	4.8	2.2	4.0	0.4	0.0	3.4	2.0	1.8	0.7	0.0	1.1	1.6	1.6
Disagree	4.6	3.0	9.5	9.0	7.7	2.6	3.2	3.4	8.3	9.9	0.0	2.6	2.6	4.0	7.0
Not sure	17.5	15.5	**	**	**	10.4	13.6	**	**	**	9.4	9.9	**	**	**
Agree	45.3	48.0	53.6	50.0	44.9	61.5	55.0	62.4	56.6	58.9	65.2	60.3	57.4	60.3	59.8
Strongly agree	31.2	32.8	32.1	38.8	43.5	25.2	28.2	30.8	33.1	29.5	24.7	27.2	38.9	34.1	31.5
I often have trouble sleeping.															
Strongly disagree	29.6	24.5	33.4	28.5	28.0	17.8	22.4	26.7	27.2	30.2	22.3	17.5	28.1	21.7	22.7
Disagree	28.6	30.6	39.7	40.0	35.6	36.3	34.9	35.1	41.8	37.2	35.8	40.5	36.3	40.2	39.5
Not sure	13.2	15.3	**	**	**	15.9	12.8	**	**	**	12.5	10.0	**	**	**
Agree	19.9	20.4	21.5	22.0	23.8	20.4	19.6	26.7	21.3	21.8	23.0	21.9	25.6	26.0	25.9
Strongly agree	8.7	9.2	5.4	9.6	12.6	9.6	10.3	11.5	9.7	10.8	6.4	10.0	10.0	12.1	11.9

\*\* Data not collected.

**Table 30. Self- concept -- continued**

Questions & Responses	Grade / Year														
	Grade 7-8					Grade 9-10					Grade 11-12				
	2005	2007	2009	2011	2013	2005	2007	2009	2011	2013	2005	2007	2009	2011	2013
	%	%	%	%	%	%	%	%	%	%	%	%	%	%	%
<u>How much do you disagree or agree with the following:</u>															
I feel sad most of the time.															
Strongly disagree	38.6	42.7	51.7	48.3	50.5	33.6	40.5	44.5	44.0	44.3	32.5	32.8	41.6	35.9	34.1
Disagree	34.7	36.2	37.8	39.3	34.1	39.5	35.1	42.6	46.5	41.3	42.6	43.9	46.1	46.4	46.8
Not sure	11.9	13.3	**	**	**	13.7	13.3	**	**	**	11.7	12.9	**	**	**
Agree	12.3	5.8	7.8	10.2	11.1	10.0	10.0	10.6	7.9	12.6	10.6	9.2	8.2	14.4	13.7
Strongly agree	2.5	2.0	2.7	2.2	4.3	3.3	1.1	2.3	1.7	1.8	2.6	1.1	4.1	3.4	5.4
On the whole, I like myself.															
Strongly disagree	1.8	2.7	5.4	2.5	5.9	3.0	1.1	3.8	3.0	1.8	4.1	2.2	1.9	2.5	5.8
Disagree	5.6	5.2	6.0	10.5	10.5	8.9	5.7	10.3	11.9	13.4	4.9	6.7	7.8	10.8	11.2
Not sure	19.0	14.8	**	**	**	18.1	15.4	**	**	**	13.9	13.8	**	**	**
Agree	47.5	45.4	44.9	42.7	41.3	53.1	55.7	52.1	48.5	54.4	56.8	55.4	53.9	51.4	51.2
Strongly agree	26.1	32.0	43.7	44.2	42.3	17.0	22.1	33.7	36.6	30.3	20.3	21.9	36.4	35.3	31.8
I have so much energy, I don't know what to do with it.															
Strongly disagree	7.3	13.7	19.5	16.3	14.1	8.8	9.7	19.5	18.7	17.5	9.8	9.6	21.6	14.6	18.1
Disagree	28.7	25.9	46.7	45.8	37.0	48.2	44.8	52.5	53.4	49.6	41.0	46.7	53.2	60.8	57.9
Not sure	30.4	27.0	**	**	**	26.5	24.2	**	**	**	31.2	22.8	**	**	**
Agree	20.6	24.6	26.3	27.6	30.8	13.6	15.5	21.5	22.1	24.0	14.3	16.5	20.1	20.6	17.6
Strongly agree	12.9	8.9	7.5	10.3	18.1	2.9	5.8	6.5	5.8	8.8	3.8	4.4	5.2	4.0	6.4
I have less energy than I think I should.															
Strongly disagree	28.6	38.2	44.0	41.2	41.1	16.6	19.3	31.6	28.0	26.6	13.9	16.2	24.5	21.3	12.2
Disagree	36.0	30.4	35.9	39.0	38.8	37.6	42.9	42.6	44.4	44.1	39.5	40.1	43.1	40.6	46.5
Not sure	20.8	20.1	**	**	**	25.1	21.8	**	**	**	20.7	19.9	**	**	**
Agree	13.1	8.9	17.1	16.7	17.0	18.1	14.6	21.3	21.7	25.0	24.8	21.3	25.7	29.5	34.3
Strongly agree	1.4	2.4	3.0	3.1	3.1	2.6	1.4	4.6	5.9	4.3	1.1	2.6	6.7	8.6	7.0



**Table 30. Self- concept -- continued**

Questions & Responses	Grade / Year														
	Grade 7-8					Grade 9-10					Grade 11-12				
	2005	2007	2009	2011	2013	2005	2007	2009	2011	2013	2005	2007	2009	2011	2013
	%	%	%	%	%	%	%	%	%	%	%	%	%	%	%
How much do you disagree or agree with the following:															
I have a number of good qualities.															
Strongly disagree	1.4	0.3	2.7	1.9	4.3	1.1	1.1	3.1	3.4	1.1	0.8	0.7	1.1	1.2	2.6
Disagree	3.8	2.7	6.0	5.3	7.2	1.8	3.6	4.6	7.4	9.2	2.3	2.6	5.6	6.0	7.2
Not sure	18.5	13.3	**	**	**	15.9	11.1	**	**	**	13.5	11.9	**	**	**
Agree	44.4	51.4	50.1	46.1	47.5	60.1	63.1	59.0	55.5	58.4	64.3	65.9	58.0	57.6	63.3
Strongly agree	31.8	32.3	41.2	46.7	41.0	21.0	21.1	33.3	33.8	31.3	19.2	18.9	35.3	35.2	26.9
All in all, I am glad I am me.															
Strongly disagree	1.4	1.0	5.4	4.0	5.2	1.8	1.4	4.6	3.4	1.8	1.5	0.7	2.2	0.9	3.7
Disagree	7.0	3.4	6.3	7.5	8.7	4.4	4.7	10.7	8.8	9.5	3.0	4.4	9.0	9.7	8.8
Not sure	14.1	11.6	**	**	**	17.3	15.8	**	**	**	15.4	13.3	**	**	**
Agree	40.5	41.8	37.2	37.4	35.2	48.7	50.5	50.0	44.7	48.6	54.9	57.8	45.1	48.8	48.8
Strongly agree	37.0	42.2	51.2	51.1	50.8	27.7	27.6	34.7	43.1	40.1	25.2	23.7	43.7	40.7	38.7
I wish I were dead.															
Strongly disagree	75.4	80.2	82.0	77.0	79.9	69.0	77.6	75.7	77.8	76.1	71.4	75.1	78.1	79.5	72.5
Disagree	10.6	10.9	12.9	15.8	13.9	15.1	12.1	18.6	18.9	17.0	17.3	16.7	17.8	15.7	20.5
Not sure	8.5	6.1	**	**	**	10.3	7.5	**	**	**	7.1	4.8	**	**	**
Agree	4.2	1.7	2.1	6.2	4.0	3.3	1.8	3.8	2.3	6.5	2.6	1.9	3.3	3.2	4.5
Strongly agree	1.4	1.0	3.0	0.9	2.2	2.2	1.1	1.9	1.0	0.4	1.5	1.5	0.7	1.6	2.6
I am restless and can't sit still															
Strongly disagree	21.5	28.6	31.0	23.8	27.1	18.2	23.6	24.7	22.3	26.0	16.7	23.2	19.9	14.9	25.2
Disagree	34.4	29.0	37.9	39.3	39.3	45.4	42.0	43.3	44.0	42.8	40.9	37.1	47.2	46.9	45.4
Not sure	20.8	16.9	**	**	**	17.5	15.9	**	**	**	20.5	17.6	**	**	**
Agree	16.1	18.6	24.8	26.6	24.4	15.6	15.2	24.7	24.5	24.2	17.8	19.5	27.7	26.7	22.0
Strongly agree	7.2	6.9	6.3	10.2	9.2	3.3	3.3	7.2	9.2	6.9	4.2	2.6	5.2	11.5	7.3
I have trouble concentrating.															
Strongly disagree	22.9	23.4	22.7	21.5	20.8	14.1	17.3	17.2	16.3	17.6	11.7	17.1	18.2	10.9	11.7
Disagree	33.2	33.9	42.7	39.0	39.2	38.7	38.1	40.8	42.1	37.0	35.1	34.2	40.1	38.5	42.8
Not sure	21.8	20.0	**	**	**	21.9	19.4	**	**	**	18.5	16.0	**	**	**
Agree	15.4	18.0	26.0	30.5	29.2	21.2	18.7	36.3	31.4	34.9	27.5	26.8	30.5	37.0	32.4
Strongly agree	6.8	4.7	8.7	9.0	10.8	4.1	6.5	5.7	10.1	10.5	7.2	5.9	11.2	13.6	13.1

\*\* Data not collected.

**Table 31-1 Perceptions of normative use – 2013**

Questions & Responses	Grade		
	7-8	9-10	11-12
	%	%	%
About how many students in your grade do you think regularly use:			
Cigarettes			
Fewer than 5%	44.7	10.7	1.8
5-10%	27.1	23.5	13.7
10-20%	14.7	19.5	16.2
20-30%	7.6	20.6	26.7
30-50%	4.1	20.2	26.0
More than 50%	1.8	5.5	15.5
Alcohol			
Fewer than 10%	57.9	13.7	2.6
10-25%	22.8	17.4	4.8
25-50%	7.7	19.6	11.0
50-75%	5.9	21.1	19.8
75-90%	2.4	15.6	34.4
More than 90%	3.3	12.6	27.5
Marijuana			
Fewer than 5%	53.8	15.4	3.7
5-10%	23.2	17.7	7.3
10-20%	9.6	14.0	10.4
20-30%	8.4	17.6	21.4
30-50%	2.2	18.6	26.7
More than 50%	2.8	16.8	30.4

**Table 31-2 Perceptions of normative use – 2011**

Questions & Responses	Grade		
	7-8	9-10	11-12
	%	%	%
About how many students in your grade do you think regularly use:			
Cigarettes			
Fewer than 5%	41.7	11.5	6.2
5-10%	29.0	26.6	21.3
10-20%	15.3	22.5	19.6
20-30%	9.4	21.0	26.0
30-50%	3.4	14.1	20.4
More than 50%	1.2	4.3	6.5
Alcohol			
Fewer than 10%	39.4	7.9	1.5
10-25%	39.1	27.0	5.8
25-50%	14.0	29.8	22.5
50-75%	5.0	21.6	36.0
75-90%	0.9	9.9	26.7
More than 90%	1.6	3.7	7.5
Marijuana			
Fewer than 5%	53.8	15.4	3.7
5-10%	23.2	17.7	7.3
10-20%	9.6	14.0	10.4
20-30%	8.4	17.6	21.4
30-50%	2.2	18.6	26.7
More than 50%	2.8	16.8	30.4

**Table 31-3 Perceptions of normative use – 2009**

Questions & Responses	Grade		
	7-8	9-10	11-12
	%	%	%
About how many students in your grade do you think regularly use:			
Cigarettes			
Fewer than 5%	44.7	10.7	1.8
5-10%	27.1	23.5	13.7
10-20%	14.7	19.5	16.2
20-30%	7.6	20.6	26.7
30-50%	4.1	20.2	26.0
More than 50%	1.8	5.5	15.5
Alcohol			
Fewer than 10%	43.9	5.5	1.1
10-25%	34.7	17.0	6.2
25-50%	14.2	27.7	17.5
50-75%	4.2	26.6	34.7
75-90%	2.4	18.5	28.8
More than 90%	0.6	4.8	11.7
Marijuana			
Fewer than 5%	57.9	13.7	2.6
5-10%	22.8	17.4	4.8
10-20%	7.7	19.6	11.0
20-30%	5.9	21.1	19.8
30-50%	2.4	15.6	34.4
More than 50%	3.3	12.6	27.5

**Table 32 Median perceptions of normative use**

Substance / Year	Grade		
	7-8	9-10	11-12
	%	%	%
<u>Median (by linear interpolation from Table 33)</u>			
<b>2013</b>			
Cigarettes	7.0	17.3	18.3
Alcohol	4.3	27.0	43.9
Marijuana	2.0	22.0	32.9
<b>2011</b>			
Cigarettes	3.9	11.5	16.2
Alcohol	8.4	27.6	51.5
Marijuana	2.3	16.7	29.0
<b>2009</b>			
Cigarettes	3.5	13.6	21.8
Alcohol	7.2	37.3	55.7
Marijuana	2.2	14.7	30.2

**SECTION 4. FAMILY DOMAIN**

**Table 33. Family attitudes toward alcohol, tobacco, and marijuana**

Questions & Responses	Grade / Year														
	Grade 7-8					Grade 9-10					Grade 11-12				
	2005	2007	2009	2011	2013	2005	2007	2009	2011	2013	2005	2007	2009	2011	2013
	%	%	%	%	%	%	%	%	%	%	%	%	%	%	%
<u>How wrong do your parents/guardians feel it would be if you:</u>															
Drink beer, wine, or hard liquor (more than a few sips)?															
Not at all wrong	0.7	1.7	2.1	1.6	2.4	1.9	1.3	3.7	2.0	2.0	4.5	4.3	8.0	7.2	0.4
A little bit wrong	8.0	5.4	5.6	4.7	3.4	11.1	14.0	16.6	13.9	4.5	27.0	29.3	24.8	21.4	7.2
Wrong	25.6	20.5	22.8	25.2	7.1	33.7	37.8	30.3	27.2	17.3	34.5	38.0	32.5	35.9	24.2
Very wrong	65.7	72.5	69.4	68.5	87.1	53.3	46.8	49.4	56.9	76.2	34.1	28.3	34.7	35.5	68.2
Smoke cigarettes?															
Not at all wrong	0.7	1.3	0.6	0.3	0.3	0.7	0.3	0.4	0.7	0.7	2.6	2.5	2.2	1.2	0.0
A little bit wrong	2.4	1.3	1.8	2.2	2.5	3.3	3.0	4.4	2.9	3.4	7.9	9.1	6.9	5.2	8.3
Wrong	10.1	9.1	13.2	13.8	7.7	15.5	15.4	20.2	18.6	16.1	26.6	24.6	28.2	25.7	22.1
Very wrong	86.8	88.2	84.5	83.7	89.6	80.4	81.3	75.0	77.8	79.8	62.9	63.8	62.8	68.0	69.6
Use marijuana?															
Not at all wrong	0.7	1.4	0.3	0.3	0.6	1.8	1.0	0.7	1.4	2.1	2.2	2.2	2.9	2.9	2.8
A little bit wrong	1.4	0.7	1.8	1.9	2.8	3.7	2.0	4.5	7.1	5.2	6.7	9.8	13.6	10.0	11.5
Wrong	5.9	4.4	5.7	6.9	4.0	10.7	10.7	15.6	14.4	11.9	17.6	15.2	23.5	23.8	19.4
Very wrong	92.0	93.6	92.2	91.0	92.6	83.8	86.3	79.2	77.1	80.8	73.4	72.8	59.9	63.4	66.3
Use a prescription drug not prescribed to you?															
Not at all wrong	**	**	**	**	1.2	**	**	**	**	0.7	**	**	**	**	0.0
A little bit wrong	**	**	**	**	1.9	**	**	**	**	1.1	**	**	**	**	1.1
Wrong	**	**	**	**	8.2	**	**	**	**	10.9	**	**	**	**	13.2
Very wrong	**	**	**	**	88.7	**	**	**	**	87.3	**	**	**	**	85.7

**Table 34. Family status of alcohol and cigarette use**

Questions & Responses	Grade / Year														
	Grade 7-8					Grade 9-10					Grade 11-12				
	2005	2007	2009	2011	2013	2005	2007	2009	2011	2013	2005	2007	2009	2011	2013
	%	%	%	%	%	%	%	%	%	%	%	%	%	%	%
Does either parent drink alcoholic beverages?															
Yes	68.2	64.1	81.5	75.9	82.4	72.4	79.3	84.9	83.6	81.0	76.0	80.4	84.8	87.0	88.7
Do brothers or sisters drink alcoholic beverages?															
Yes	**	**	15.9	14.9	13.2	**	**	35.1	30.1	31.1	**	**	46.7	48.5	47.4
I don't know	**	**	9.7	9.9	11.6	**	**	7.0	8.9	10.6	**	**	5.8	5.6	5.2
I have no siblings	**	**	5.9	5.0	6.1	**	**	3.7	7.7	6.1	**	**	4.3	4.1	7.4
Has a family member used alcohol enough to create problems?															
Yes	24.0	20.2	13.5	13.2	12.8	26.8	26.1	23.2	19.2	13.8	30.3	28.3	24.6	27.2	19.5
Do either parent smoke cigarettes?															
Yes	23.6	17.2	12.6	12.8	14.3	20.0	16.1	20.7	18.3	10.9	20.6	21.4	18.4	20.0	19.0
Do brothers or sisters smoke cigarettes?															
Yes	**	**	7.9	5.0	6.4	**	**	14.2	12.0	9.2	**	**	19.6	13.5	14.9
I have no siblings	**	**	5.3	5.0	6.4	**	**	4.0	5.5	5.8	**	**	2.9	4.0	5.9

\*\* Data not collected.

**Table 35. Family management**

Questions & Responses	Grade / Year														
	Grade 7-8					Grade 9-10					Grade 11-12				
	2005	2007	2009	2011	2013	2005	2007	2009	2011	2013	2005	2007	2009	2011	2013
	%	%	%	%	%	%	%	%	%	%	%	%	%	%	%
On a regular day, how many hours do you usually spend after school without an adult present?															
None	12.5	16.4	13.8	9.9	11.8	12.2	11.4	8.0	8.7	9.2	4.1	6.9	6.5	6.4	5.7
Less than 1 hour	34.4	37.5	25.5	22.4	26.6	35.2	33.6	19.0	16.5	23.9	22.9	19.9	8.4	14.1	14.1
1-2 hours	26.7	29.1	37.0	43.8	39.3	27.8	25.5	36.5	41.6	39.5	24.4	25.7	29.8	35.2	29.9
Up to 4 hours	20.1	14.4	15.8	16.5	15.3	21.9	25.2	25.9	22.8	20.2	37.2	34.8	29.1	22.1	28.6
More than 4 hours	6.3	2.7	7.9	7.5	7.0	3.0	4.4	10.6	10.3	7.2	11.3	12.7	26.2	22.2	21.8
When I am away from home, my parent/guardian knows where I am and who I am with.															
Definitely not true	0.0	0.3	1.2	0.9	0.9	0.4	0.3	1.5	1.3	1.4	3.4	0.7	4.7	3.6	2.7
Mostly not true	4.2	1.0	2.4	0.9	1.3	5.9	3.3	9.8	6.8	3.4	10.5	8.0	10.5	10.3	6.0
Mostly true	27.7	34.3	29.2	20.5	20.5	49.3	48.2	46.2	37.4	35.5	61.4	65.6	55.8	52.7	51.4
Definitely true	68.2	64.3	67.3	77.6	77.3	44.5	48.2	42.5	54.6	59.8	24.7	25.7	29.0	33.4	39.9
If I break one of my parent's rules, I usually get punished.															
Definitely not true	3.8	3.0	3.6	1.9	5.1	2.6	2.7	5.1	5.2	2.7	8.0	5.8	6.9	8.1	4.8
Mostly not true	18.4	13.5	12.5	11.5	11.2	24.0	18.4	16.0	13.3	14.3	25.8	29.1	22.5	20.6	17.6
Mostly true	57.3	56.2	45.1	45.6	44.8	53.1	50.2	50.2	43.4	48.8	47.0	48.4	49.1	46.0	47.4
Definitely true	20.5	27.3	38.9	41.0	38.9	20.3	28.8	28.7	38.0	34.1	19.3	16.7	21.5	25.3	30.3
My family has clear rules discouraging drinking alcohol.															
Definitely not true	2.8	2.4	2.4	3.1	3.0	1.5	2.0	2.6	2.6	4.3	4.9	0.7	4.0	4.8	1.6
Mostly not true	7.6	5.7	4.7	3.1	4.6	8.8	9.1	9.6	9.9	7.7	14.3	15.9	18.9	16.6	16.2
Mostly true	19.7	18.9	25.7	28.8	24.6	24.6	29.9	37.6	34.8	33.3	32.7	40.9	43.6	37.0	34.7
Definitely true	69.9	73.1	67.2	65.0	67.8	65.1	59.1	50.2	52.7	54.7	48.1	42.4	33.5	41.5	47.5
My family has clear rules discouraging smoking.															
Definitely not true	**	**	2.1	2.8	3.4	**	**	2.9	4.3	2.7	**	**	8.8	6.4	2.0
Mostly not true	**	**	3.0	2.5	2.1	**	**	5.1	5.5	5.4	**	**	14.2	7.5	5.0
Mostly true	**	**	11.0	12.1	12.2	**	**	21.2	14.2	13.7	**	**	25.2	22.4	23.3
Definitely true	**	**	83.9	82.6	82.3	**	**	70.7	76.0	78.3	**	**	51.8	63.7	69.7

\*\* Data not collected.



**Table 36. Parental attachment and communication**

Questions & Responses	Grade / Year														
	Grade 7-8					Grade 9-10					Grade 11-12				
	2005	2007	2009	2011	2013	2005	2007	2009	2011	2013	2005	2007	2009	2011	2013
	%	%	%	%	%	%	%	%	%	%	%	%	%	%	%
I feel very close to my parent/guardian(s)															
Definitely not true	4.2	1.3	2.1	1.9	1.8	4.4	4.1	4.0	3.9	2.4	6.0	4.0	5.4	4.9	4.3
Mostly not true	7.3	7.4	5.3	4.4	6.2	9.2	13.2	13.5	11.0	9.1	12.8	10.9	10.1	13.1	9.9
Mostly true	35.1	30.9	32.2	29.0	24.0	40.2	33.1	45.5	42.0	33.2	38.5	42.0	46.7	45.3	46.8
Definitely true	53.5	60.4	60.5	64.8	68.0	46.1	49.7	37.1	43.1	55.2	42.6	43.1	37.7	36.7	39.0
I enjoy spending time with my parent/guardian(s)															
Definitely not true	4.5	1.4	4.1	1.6	2.4	3.7	4.8	4.4	5.6	2.8	5.6	2.9	5.4	6.3	3.3
Mostly not true	11.4	11.7	10.0	6.8	5.8	16.9	16.0	16.7	14.9	13.7	16.5	20.1	15.6	16.5	13.7
Mostly true	46.7	48.5	43.8	49.7	39.4	47.9	49.3	57.1	50.4	46.1	51.7	48.5	56.5	50.9	58.7
Definitely true	37.4	38.5	42.1	41.9	52.4	31.5	29.9	21.8	29.1	37.5	26.2	28.5	22.5	26.4	24.3
I share my thoughts and feelings with my parent/guardian(s)															
Definitely not true	8.0	6.8	10.3	10.2	10.0	9.2	10.5	9.1	15.4	9.3	13.1	8.0	10.1	15.3	13.9
Mostly not true	37.6	30.1	23.0	21.1	21.4	29.9	37.1	32.0	30.4	26.9	33.7	32.6	27.9	28.5	28.0
Mostly true	36.2	44.5	45.4	43.2	40.7	44.6	37.8	45.1	40.2	45.3	40.1	44.6	43.1	40.0	44.3
Definitely true	18.1	18.5	21.2	25.5	27.9	16.2	14.6	13.8	13.9	18.5	13.1	14.9	18.8	16.2	13.8

**Table 37. Positive family involvement**

Questions & Responses	Grade / Year														
	Grade 7-8					Grade 9-10					Grade 11-12				
	2005	2007	2009	2011	2013	2005	2007	2009	2011	2013	2005	2007	2009	2011	2013
<u>My parent/guardian(s):</u>	%	%	%	%	%	%	%	%	%	%	%	%	%	%	%
Gives lots of chances to do fun things with them and my family.															
Definitely not true	2.8	2.0	2.6	1.2	2.7	2.9	2.3	2.5	3.7	3.1	5.2	4.4	4.4	6.3	3.9
Mostly not true	14.0	8.4	10.9	12.1	8.2	12.5	14.4	12.0	18.0	12.8	19.9	17.8	15.3	20.6	14.6
Mostly true	39.9	41.4	35.0	37.2	37.0	55.9	43.0	55.6	45.2	43.3	47.2	50.5	52.0	40.1	49.0
Definitely true	43.4	48.1	51.5	49.5	52.1	28.7	40.3	29.8	33.2	40.8	27.7	27.3	28.4	33.0	32.5
Gives me help and support.															
Definitely not true	2.1	0.7	1.2	1.6	3.0	2.6	2.4	2.2	1.9	2.4	3.4	1.5	1.8	2.7	2.0
Mostly not true	5.2	4.7	2.7	5.6	1.9	3.7	6.7	5.1	7.3	6.1	4.9	6.9	5.8	5.4	4.1
Mostly true	31.5	29.3	31.9	25.9	25.3	37.5	34.0	43.3	37.5	32.4	38.7	39.8	39.3	36.7	40.8
Definitely true	61.2	65.3	64.3	67.0	69.9	56.3	56.9	49.5	53.3	59.1	53.0	51.8	53.1	55.2	53.1
Asks if my homework is done.															
Definitely not true	3.1	2.4	2.1	0.3	3.3	5.1	4.7	4.7	5.9	4.5	7.2	9.4	12.0	12.1	10.1
Mostly not true	8.0	7.6	5.9	6.5	5.9	11.4	13.2	13.8	11.1	11.1	18.5	23.2	17.0	16.4	14.8
Mostly true	34.5	29.6	29.7	26.6	24.0	36.4	33.9	38.2	26.4	32.5	39.6	38.4	39.1	31.9	34.9
Definitely true	54.4	60.5	62.4	66.5	66.8	47.1	48.1	43.3	56.6	51.9	34.7	29.0	31.9	39.6	40.3
Participates in activities at my school.															
Definitely not true	29.1	35.5	24.3	18.3	19.1	33.5	38.9	32.1	29.5	19.9	33.3	33.7	33.3	32.9	29.8
Mostly not true	39.8	32.8	25.4	28.0	25.5	40.4	37.9	25.2	26.7	23.8	31.5	37.0	27.9	29.0	23.3
Mostly true	23.9	25.3	34.6	34.5	32.7	20.2	18.5	32.5	31.2	35.7	26.2	24.6	26.1	25.2	35.3
Definitely true	7.3	6.5	15.7	19.2	22.7	5.9	4.7	10.2	12.7	20.5	9.0	4.7	12.7	12.8	11.7

**SECTION 5. SCHOOL DOMAIN**

**Table 38. School performance**

Questions & Responses	Grade / Year														
	Grade 7-8					Grade 9-10					Grade 11-12				
	2005	2007	2009	2011	2013	2005	2007	2009	2011	2013	2005	2007	2009	2011	2013
What kinds of grades do you usually get?	%	%	%	%	%	%	%	%	%	%	%	%	%	%	%
Mostly A's	22.3	28.7	37.5	33.1	43.1	20.2	25.3	23.6	36.7	39.6	17.5	14.2	24.5	25.9	27.9
A's and B's	39.8	39.8	24.0	34.7	31.0	42.0	40.4	33.8	30.6	29.8	41.8	45.8	30.0	30.1	41.0
Mostly B's	16.0	9.6	22.0	16.4	13.1	17.1	13.0	24.7	17.5	18.3	17.1	16.2	28.2	24.8	21.0
B's and C's	13.8	15.3	9.7	9.0	7.3	12.5	15.1	12.7	9.6	6.9	17.5	18.5	11.9	12.8	6.1
Mostly C's	4.8	2.7	4.4	3.7	3.3	2.7	3.5	2.9	3.2	4.2	3.2	2.7	4.0	4.3	2.8
C's and D's	2.6	3.8	1.2	0.9	1.3	4.7	2.5	1.5	1.7	1.0	2.0	1.9	0.7	1.2	1.3
Mostly D's	0.0	0.0	0.6	1.9	0.6	0.0	0.4	0.7	0.7	0.3	0.8	0.4	0.7	0.3	0.0
D's and F's	0.7	0.0	0.0	0.3	0.0	0.8	0.0	0.0	0.0	0.0	0.0	0.0	0.0	0.3	0.0
Mostly F's	0.0	0.0	0.6	0.0	0.3	0.0	0.0	0.0	0.0	0.0	0.0	0.4	0.0	0.3	0.0

**Table 39. Commitment to school**

Questions & Responses	Grade / Year														
	Grade 7-8					Grade 9-10					Grade 11-12				
	2005	2007	2009	2011	2013	2005	2007	2009	2011	2013	2005	2007	2009	2011	2013
	%	%	%	%	%	%	%	%	%	%	%	%	%	%	%
I try hard to do good work at school.															
Definitely not true	0.3	0.0	0.3	0.9	0.3	0.7	0.7	0.4	0.7	1.0	3.7	1.8	0.4	1.6	1.1
Mostly not true	3.5	3.3	3.2	2.2	1.2	8.9	3.3	3.6	4.3	3.1	10.9	9.4	6.9	8.5	5.5
Mostly true	51.6	43.1	39.7	40.1	37.1	48.3	44.5	49.1	43.9	38.3	52.4	46.0	45.8	46.7	44.0
Definitely true	44.6	53.5	56.8	56.8	61.3	42.1	51.5	46.9	51.1	57.6	33.0	42.8	46.9	43.2	49.5
I want very much to get more education after high school.															
Definitely not true	2.4	1.7	1.2	0.6	0.9	1.8	0.7	0.4	1.6	1.7	0.0	0.7	0.4	0.3	0.7
Mostly not true	6.9	4.4	3.2	2.5	2.1	2.9	4.0	3.3	1.9	2.1	6.0	3.6	6.5	1.5	1.7
Mostly true	29.2	25.8	23.6	23.4	21.2	19.5	15.7	17.6	17.5	18.7	21.0	17.0	13.7	12.5	16.8
Definitely true	61.5	68.1	72.0	73.5	75.7	75.7	79.6	78.8	78.9	77.5	73.0	78.6	79.4	85.7	80.7
It is important to me to get good grades.															
Definitely not true	1.0	0.0	1.5	0.6	0.3	1.8	0.3	0.4	0.7	1.0	2.6	1.1	0.4	0.3	0.8
Mostly not true	3.5	3.4	4.1	2.2	1.5	6.3	3.7	1.5	2.7	3.1	7.9	7.3	5.5	6.3	6.2
Mostly true	32.6	28.3	21.6	17.8	21.3	33.1	29.8	31.6	25.2	18.8	43.4	37.7	35.5	34.4	32.6
Definitely true	62.8	68.4	72.8	79.4	76.8	58.8	66.2	66.5	71.4	77.1	46.1	53.8	58.6	59.0	60.4
I have given up on school.															
Definitely not true	80.5	82.4	83.4	86.2	87.4	78.6	81.6	79.5	82.3	77.4	61.4	67.6	64.6	63.2	57.8
Mostly not true	16.0	14.9	11.8	9.1	8.9	15.5	16.1	17.2	12.8	16.7	27.7	24.7	27.4	27.1	34.8
Mostly true	1.7	2.0	2.7	3.1	0.9	4.1	2.0	3.3	2.9	4.5	9.4	5.5	7.6	7.9	6.1
Definitely true	1.7	0.7	2.1	1.6	2.7	1.8	0.3	0.0	2.0	1.4	1.5	2.2	0.4	1.8	1.3
I feel safe at school.															
Definitely not true	5.2	1.7	3.5	3.1	3.3	3.0	2.3	3.7	3.3	1.4	4.5	2.9	4.0	1.5	3.1
Mostly not true	12.9	6.4	9.1	6.9	7.0	14.0	9.4	8.8	8.5	6.1	10.1	9.1	5.8	6.6	5.0
Mostly true	56.4	57.7	53.4	52.8	54.9	63.1	59.5	69.9	59.6	60.0	57.3	60.1	60.0	61.0	55.5
Definitely true	25.4	34.2	33.9	37.2	34.8	19.9	28.8	17.6	28.6	32.5	28.1	27.9	30.2	30.9	36.4

**Table 40. Perception of school enforcement of policies on substances**

	Grade/Year								
	2013			2011			2009		
Questions and responses	7-8	9-10	11-12	7-8	9-10	11-12	7-8	9-10	11-12
	%	%	%	%	%	%	%	%	%
<u>What is most severe discipline if student is caught at school:</u>									
With an alcoholic beverage?									
Nothing	1.2	1.1	0.4	0.0	0.6	0.9	0.0	1.5	0.0
Sent to principal's office	3.6	1.7	0.4	2.2	1.7	0.6	1.5	0.7	0.7
Detention	1.2	1.3	1.5	0.6	1.0	1.5	0.3	1.1	1.8
Suspension	33.8	46.6	50.3	41.0	46.2	36.1	34.5	49.6	53.6
Expulsion	33.6	30.5	28.4	40.4	36.4	52.1	43.2	23.5	25.2
I don't know	26.5	18.8	19.0	15.8	14.1	8.8	20.5	23.5	18.6
In possession of marijuana?									
Nothing	0.9	1.1	0.4	0.9	0.3	0.6	0.6	0.7	0.4
Sent to principal's office	1.8	0.7	0.4	0.3	0.7	0.6	1.2	0.4	0.0
Detention	0.9	1.1	1.5	0.9	0.7	1.2	0.0	0.4	0.7
Suspension	21.1	38.4	48.6	23.9	33.7	38.6	18.1	37.6	38.6
Expulsion	53.3	41.8	32.1	57.4	49.7	50.0	62.3	44.3	45.6
I don't know	22.0	17.0	16.9	16.4	14.9	8.9	17.8	16.6	14.7

**SECTION 6. COMMUNITY DOMAIN**

**Table 41. Perception of neighborhood environment**

Questions & Responses	Grade / Year														
	Grade 7-8					Grade 9-10					Grade 11-12				
	2005	2007	2009	2011	2013	2005	2007	2009	2011	2013	2005	2007	2009	2011	2013
In my neighborhood: There are lots of things for young people to do	%	%	%	%	%	%	%	%	%	%	%	%	%	%	%
Definitely not true	20.5	24.4	16.9	8.4	4.9	40.1	39.1	37.7	25.0	13.4	54.3	51.5	49.1	45.4	26.3
Mostly not true	25	29.4	17.8	13.4	12.6	32.4	33.8	32.5	34.8	32.8	30.3	33.2	32.7	33.5	45.3
Mostly true	36.5	28.4	37.7	40.5	34.1	21.3	23.1	19	28.7	37.4	12.7	12.4	12.6	17.0	24.1
Definitely true	18.1	17.7	27.6	37.7	48.3	6.3	4	10.8	11.5	16.4	2.6	2.9	5.6	4.1	4.3
It is a safe place															
Definitely not true	4.9	2	6.5	3.4	3.1	1.5	2.4	3.4	5.6	3.2	1.1	1.1	0.7	1.5	3.3
Mostly not true	8.1	3.1	9.5	10.6	9.3	3.3	5.7	14.6	12.9	9.0	3	3.3	8.1	9.8	8.0
Mostly true	39.3	42	59.6	57.0	58.1	45.8	42.2	67.9	64.0	59.3	48.1	48.5	70.1	65.6	67.4
Definitely true	47.7	52.9	24.3	28.9	29.6	49.4	49.7	14.2	17.6	28.5	47.7	47.1	21	23.1	21.3

**Table 42. Neighborhood drug involvement**

Questions & Responses	Grade / Year														
	Grade 7-8					Grade 9-10					Grade 11-12				
	2005	2007	2009	2011	2013	2005	2007	2009	2011	2013	2005	2007	2009	2011	2013
	%	%	%	%	%	%	%	%	%	%	%	%	%	%	%
In my neighborhood: A lot of drugs are sold															
Definitely not true	75.2	81.8	32.9	31.2	34.2	65.4	61.0	10.2	8.8	6.1	50.9	53.0	4.1	5.9	6.2
Mostly not true	15.4	12.7	42.5	45.6	40.7	24.3	25.1	31.2	34.0	33.8	27.7	30.0	26.6	23.5	20.4
Mostly true	5.9	3.4	18.3	16.3	15.6	4.8	7.1	36.1	36.1	36.5	12.7	11.5	33.9	39.8	37.7
Definitely true	3.5	2.1	6.3	6.9	9.5	5.5	6.8	22.6	21.0	23.6	8.6	5.6	35.4	30.8	35.7
A lot of kids I know are into using drugs															
Definitely not true	68.6	77.6	29.6	33.7	32.9	48.7	45.8	6.3	6.0	5.9	33.5	34.5	1.9	3.1	3.4
Mostly not true	20.6	14.6	44.5	43.1	40.4	25.8	29.3	31.7	31.9	23.4	29.7	36.0	15.2	16.9	14.4
Mostly true	7.0	2.4	20.3	16.6	16.5	16.2	15.8	35.8	37.4	40.1	19.5	17.1	41.1	41.6	38.3
Definitely true	3.8	5.4	5.7	6.6	10.1	9.2	9.1	26.1	24.7	30.6	17.3	12.4	41.9	38.4	43.9
People are trying to keep kids off drugs															
Definitely not true	9.5	10.2	5.1	3.7	3.0	11.4	8.5	4.1	5.8	3.2	14.8	12.1	5.9	6.8	5.5
Mostly not true	15.1	9.5	8.6	7.8	9.2	17.6	21.1	21.6	17.6	17.4	26.6	22.8	22.5	22.9	21.9
Mostly true	34.7	34.2	36.3	36.1	30.1	47.8	41.5	54.1	51.9	49.4	46.0	46.3	58.3	53.4	53.1
Definitely true	40.7	46.1	50.0	52.3	57.7	23.2	28.9	20.1	24.7	30.0	12.5	18.8	13.3	16.9	19.5

**Table 43. Perception of strategies to prevent alcohol use**

Questions & Responses	Grade / Year														
	Grade 7-8					Grade 9-10					Grade 11-12				
	2005	2007	2009	2011	2013*	2005	2007	2009	2011	2013*	2005	2007	2009	2011	2013*
	%	%	%	%	%	%	%	%	%	%	%	%	%	%	%
How important do you think the following are in preventing kids from drinking alcohol?															
High price															
Very important	24.2	20.1	32.5	32.3	31.8	10.3	12.8	22.3	27.6	30.2	8.2	8.7	20.6	24.2	23.7
Somewhat important	47.0	52.3	39.5	42.6	33.1	46.1	47.3	36.9	42.2	36.6	41.2	41.7	36.7	40.6	35.6
Not important	28.8	27.5	28.1	25.1	26.7	43.5	39.9	40.8	30.2	29.7	50.6	49.6	42.7	35.2	39.0
Checking ID's in stores and bars															
Very important	81.7	82.5	62.1	59.2	62.1	67.0	63.2	46.0	49.0	53.7	46.8	54.0	36.2	41.9	41.8
Somewhat important	14.8	14.5	27.0	31.4	23.5	27.0	27.4	31.6	33.2	30.5	39.0	34.8	39.5	37.3	37.6
Not important	3.5	3.0	10.8	9.4	8.3	5.9	9.4	22.4	17.8	13.4	14.2	11.2	24.2	20.8	19.8
Ads that show the problems associated with drinking															
Very important	45.6	44.6	40.8	41.6	47.0	31.7	27.1	18.9	21.2	23.0	16.5	18.8	9.9	17.9	13.8
Somewhat important	37.9	38.9	42.8	43.0	36.5	37.6	42.8	39.4	42.1	40.9	38.3	42.0	35.8	34.2	40.6
Not important	16.5	16.6	16.4	15.5	12.6	30.6	30.1	41.7	36.7	32.3	45.1	39.1	54.2	47.9	42.4
Friends who don't drink															
Very important	63.9	69.2	60.9	55.2	52.5	62.7	59.9	49.4	53.8	49.8	48.3	45.7	45.1	49.4	46.4
Somewhat important	29.5	24.4	29.0	33.0	32.5	26.9	28.6	38.6	35.2	38.1	30	38	38.8	32.8	39.7
Not important	6.7	6.4	10.0	11.8	9.8	10.3	11.4	11.9	11.0	9.3	21.7	16.3	16.2	17.8	11.1
Friends who disapprove of drinking															
Very important	63.9	70.3	64.5	53.2	57.7	61.3	58.1	45.7	51.5	51.1	42.1	39.5	34.3	40.5	41.7
Somewhat important	29.8	23.6	28.6	38.2	28.2	29.9	31.2	40.7	38.0	34.1	37.2	45.3	45.5	37.8	40.3
Not important	6.3	6.1	6.9	8.6	9.8	8.9	10.7	13.6	10.5	11.0	20.7	15.2	20.2	21.8	15.2
Parental strictness about drinking															
Very important	60.9	62.2	63.6	61.4	59.7	48.1	41.9	38.2	46.3	45.1	22.8	28	28.1	34.4	27.7
Somewhat important	31.7	29.7	28.6	30.7	28.4	37.7	44.6	46.5	38.9	40.5	49.1	53.5	49.5	45.5	48.9
Not important	7.4	8.1	7.8	7.9	7.6	14.2	13.4	15.3	14.8	11.7	28.1	18.5	22.5	20.1	20.0
Driver's license suspension															
Very important	**	**	59.5	53.8	50.8	**	**	59.9	57.5	58.5	**	**	52.4	55.8	52.4
Somewhat important	**	**	28.6	35.7	28.8	**	**	30.1	33.1	27.8	**	**	36.4	33.3	36.4
Not important	**	**	11.7	10.5	13.1	**	**	10.0	9.4	11.0	**	**	11.2	10.8	10.0

\* "I don't know" response in 2013 was 4% or less, and is not included in statistics.



\*

**Table 43. Perception of strategies to prevent alcohol use -- continued**

Questions & Responses	Grade / Year														
	Grade 7-8					Grade 9-10					Grade 11-12				
	2005	2007	2009	2011	2013	2005	2007	2009	2011	2013	2005	2007	2009	2011	2013
	%	%	%	%	%	%	%	%	%	%	%	%	%	%	%
How important do you think the following are in preventing kids from drinking alcohol?															
Fine of \$200															
Very important	**	**	53.6	51.8	48.1	**	**	40.8	45.0	43.2	**	**	32.0	37.4	29.3
Somewhat important	**	**	35.3	36.2	30.6	**	**	40.4	32.9	36.6	**	**	40.4	40.1	43.2
Not important	**	**	11.1	12.1	12.7	**	**	18.8	22.1	17.1	**	**	27.5	22.5	25.1
Getting arrested for drinking															
Very important	70.1	63.7	**	**	**	59.3	57.0	**	**	**	47.9	54.0	**	**	**
Somewhat important	25.4	29.8	**	**	**	33.7	34.6	**	**	**	40.8	37.0	**	**	**
Not important	4.6	6.5	**	**	**	7.0	8.4	**	**	**	11.3	9.1	**	**	**
Alcohol education in school															
Very important	46.7	51.0	50.6	55.3	56.8	24.7	24.3	22.7	26.7	33.2	11.7	12.7	10.6	19.8	14.2
Somewhat important	36.8	37.4	36.3	33.3	26.6	39.5	43.6	36.7	47.1	38.1	38.9	45.1	33.4	34.8	43.4
Not important	16.5	11.6	13.1	11.3	12.7	35.8	32.1	40.6	26.2	26.0	49.4	42.2	55.8	45.4	39.4
Alcohol-free activities															
Very important	48.2	53.7	51.9	52.1	49.3	32.7	30.5	30.4	27.7	39.7	16.9	17.0	17.4	22.4	22.0
Somewhat important	36.6	34.1	37.3	36.3	31.1	39.4	36.6	37.7	39.6	34.2	36.3	44.6	35.2	34.9	36.1
Not important	15.1	12.2	10.8	11.7	15.0	27.9	32.9	31.9	32.7	22.1	46.8	38.4	47.4	42.7	38.8
Fear of addiction															
Very important	51.1	49.7	51.8	50.5	52.7	33.1	31.2	29.0	29.9	34.8	20.6	14.5	14.7	28.1	19.5
Somewhat important	35.2	36.7	32.5	36.9	32.0	42.4	40.3	36.7	40.3	40.2	39.0	41.5	31.3	29.1	36.8
Not important	13.7	13.6	15.7	12.6	10.5	24.5	28.5	34.3	29.8	21.9	40.4	44.0	54.0	42.8	41.7
Blood alcohol or breathalyzer tests at school or home															
Very important	48.6	47.6	42.6	42.0	42.0	39.5	41.1	35.7	35.9	39.8	30.1	27.3	31.8	39.4	28.7
Somewhat important	35.9	39.2	41.3	39.5	33.5	42.4	41.1	45.2	42.4	38.6	47.4	49.1	45.7	40.8	47.6
Not important	15.5	13.2	16.1	18.5	11.6	18.1	17.8	19.0	21.7	17.8	22.6	23.6	22.5	19.8	21.3

\*\* Data not collected.

**SECTION 7. COMPARISONS: RECENT ALCOHOL CONSUMPTION: NO vs. YES**

Tables in this section compare respondents in all grades who reported drinking alcoholic beverages within the past 30 days (YES) with those who reported they had not (NO). Explanation of the comparisons can be found in Methods.

**Table 44. Social supports**

Question and response choices (Dependent variable)	2011				2009			
	Statistical Significance	Scale Score, Recent Alcohol Consumption			Statistical Significance	Scale Score, Recent Alcohol Consumption		
		NO	YES	YES/NO		NO	YES	YES/NO
	p-value	% of max	% of max	% ratio	p-value	% of max	% of max	% ratio
Parents or guardians	<b>&lt;0.001</b>	<b>48.1</b>	<b>33.1</b>	<b>68.8</b>	<b>&lt;0.001</b>	<b>47.2</b>	<b>33.8</b>	<b>71.5</b>
A relative other than parent	n/s	24.2	15.8	65.5	n/s	21.1	14.8	70.2
A teacher	0.05	15.8	7.9	49.7	0.05	14.3	5.7	39.9
A mentor	n/s	14.2	12.5	87.9	n/s	13.1	10.2	77.7
An adult who is not family or a teacher	n/s	14.2	17.4	122.5	n/s	12.8	17.5	136.1
A brother or sister	n/s	35.0	30.7	87.7	n/s	35.2	35.6	101.1
A friend	n/s	67.4	69.8	103.5	n/s	64.3	72.5	112.8
Nobody. I keep it to myself.	n/s	46.7	51.4	109.9	n/s	42.5	50.6	119.1

Higher score means GREATER likelihood of talking with person(s) indicated

**Table 45, continued. Social supports**

Question and response choices (Dependent variable)	2013			
	Statistical Significance	Scale Score, Recent Alcohol Consumption		
		NO	YES	YES/NO
	p-value	% of max	% of max	% ratio
Parents or guardians	<0.05	47.8	35.0	73.3
A relative other than parent	n/s	22.5	12.7	56.6
A teacher	<0.05	17.6	9.9	56.5
A mentor	n/s	17.8	14.3	80.7
An adult who is not family or a teacher	n/s	14.6	14.2	97.3
A brother or sister	n/s	31.3	31.0	99.2
A friend	n/s	64.9	69.3	106.7
Nobody. I keep it to myself.	n/s	49.0	49.7	101.6

\* Mean scores are based on the 4-point scale of Table 28, rescaled to 0-100.

**Table 46. Attitudes toward antisocial behavior**

Question and response choices	2011				2009			
	Statistical Significance	Scale Score, Recent Alcohol Consumption			Statistical Significance	Scale Score, Recent Alcohol Consumption		
		NO	YES	YES/NO		NO	YES	YES/NO
How wrong for someone your age to:	p-value	% of max	% of max	% ratio	p-value	% of max	% of max	% ratio
Drink alcoholic beverages	<0.001	79.8	31.1	39.0	<0.001	78.1	24.5	31.3
Smoke cigarettes	<0.001	86.1	60.1	69.9	<0.001	84.8	51.1	60.2
Use marijuana	<0.001	81.5	40.6	49.8	<0.001	84.4	37.6	44.6
Purposely damage property not belonging to them	<0.001	88.2	77.0	87.4	<0.001	86.1	76.6	89.0
Carry a knife, gun or other weapon	<0.001	85.8	72.2	84.2	<0.001	86.8	74.3	85.6
Steal something worth less than \$100	<0.001	82.8	69.8	84.2	<0.001	82.5	64.7	78.4
Pick a fight with someone (not family)	<0.001	76.6	60.7	79.3	<0.001	72.8	55.7	76.5
Attack someone to hurt them	<0.001	89.9	75.6	84.1	<0.001	89.2	77.6	86.9
Use inhalants	<0.001	90.6	79.8	88.0	<0.001	90.7	77.7	85.7
Cheat on a test at school	<0.001	73.5	54.5	74.1	<0.001	72.2	44.5	61.6
Drink and drive	<0.001	95.6	85.9	89.9	<0.001	95.4	86.6	90.8
Play games for money, like poker	<0.05	61.8	42.2	68.3	<0.001	56.0	30.4	54.4
Place bets on-line	<0.001	68.3	46.4	68.0	<0.001	65.8	40.0	60.8
Play scratch tickets for money	<0.001	54.2	33.3	61.4	<0.001	52.2	28.3	54.2

Higher score means the act was considered MORE WRONG by the average respondent.

**Table 46, continued. Attitudes toward antisocial behavior**

Question and response choices	2013			
	Statistical Significance	Scale Score, Recent Alcohol Consumption		
		NO	YES	YES/NO
How wrong for someone your age to:	p-value	% of max	% of max	% ratio
Drink alcoholic beverages	<0.001	80.8	34.1	42.2
Smoke cigarettes	<0.001	88.7	65.5	73.8
Use marijuana	<0.001	79.7	32.5	40.7
Purposely damage property not belonging to them	<0.001	89.7	78.3	87.3
Carry a knife, gun or other weapon	n/s	87.6	82.6	94.3
Steal something worth less than \$100	~0.001	83.9	76.1	90.7
Pick a fight with someone (not family)	~0.001	79.2	70.8	89.4
Attack someone to hurt them	<0.001	92.1	81.6	88.6
Use inhalants	<0.001	92.5	84.8	91.6
Cheat on a test at school	<0.001	76.0	56.2	73.8
Drink and drive	<0.001	95.4	89.1	93.4
Play games for money, like poker	<0.001	66.2	43.1	65.1
Place bets on-line	<0.001	71.1	50.8	71.4
Play scratch tickets for money	~0.001	56.7	34.4	60.8

\* Mean scores are based on the 4-point scale of Table 30, rescaled to 0-100.

**Table 47. Time spent after school**

Question and response choices	2011				2009			
	Statistical Significance	Scale Score, Recent Alcohol Consumption			Statistical Significance	Scale Score, Recent Alcohol Consumption		
		NO	YES	YES/NO		NO	YES	YES/NO
How many hours a week do you usually spend:	p-value	% of max	% of max	% ratio	p-value	% of max	% of max	% ratio
Exercising, working out, or playing sports	n/s	53.9	59.6	110.5	n/s	53.3	52.9	99.3
Playing or practicing organized sports	n/s	44.6	42.6	95.3	n/s	45.4	40.4	89.1
In clubs (like school clubs, scouts, boys/girls club)	<b>&lt;0.001</b>	22.4	12.3	54.9	n/s	18.2	15.2	83.7
Watching TV	n/s	50.0	48.3	96.6	n/s	53.7	52.3	97.5
Reading books, magazines or newspapers	<b>&lt;0.001</b>	35.7	21.7	60.6	<b>&lt;0.001</b>	36.2	26.9	74.3
Hanging out with friends in public places	<b>&lt;0.001</b>	40.9	58.2	142.2	<b>&lt;0.001</b>	39.6	60.6	153.0
Working at a paying job	n/s	23.0	43.9	190.6	n/s	27.7	45.2	163.1
Helping around the house	n/s	42.3	41.5	98.0	n/s	43.9	37.9	86.3
Doing volunteer work	n/s	20.8	19.5	93.5	n/s	19.8	17.8	89.9
In a band, choir, or playing a musical instrument	n/s	21.4	13.1	61.3	<b>~0.001</b>	24.9	13.6	54.5
Attending religious services	<0.05	16.2	10.0	61.4	<b>&lt;0.001</b>	19.0	7.8	41.2
Using a computer unrelated to school	n/s	57.5	66.0	114.9	n/s	59.2	65.4	110.5
Playing video games	n/s	28.6	23.6	82.4	n/s	29.1	24.2	83.2
Talking on the telephone	n/s	25.6	28.0	109.2	n/s	30.2	38.7	128.0
Listening to music	n/s	57.9	66.6	114.9	n/s	57.6	65.6	113.8

Higher score means more time spent in the activity by average respondent.

**Table 47, continued. Time spent after school**

Question and response choices	2013			
	Statistical Significance	Scale Score, Recent Alcohol Consumption		
		NO	YES	YES/NO
How many hours a week do you usually spend:	p-value	% of max	% of max	% ratio
Exercising, working out, or playing sports	n/s	52.2	62.2	119.2
Playing or practicing organized sports	n/s	47.1	42.6	90.4
In clubs (like school clubs, scouts, boys/girls club)	n/s	23.0	17.2	75.1
Watching TV	<0.05	45.3	52.1	114.9
Reading books, magazines or newspapers	<0.05	34.8	24.5	70.6
Hanging out with friends in public places	n/s	40.7	55.5	136.5
Working at a paying job	n/s	24.8	44.5	179.0
Helping around the house	n/s	41.7	42.3	101.4
Doing volunteer work	n/s	22.3	21.6	96.6
In a band, choir, or playing a musical instrument	n/s	21.7	14.6	67.4
Attending religious services	n/s	17.4	11.1	64.2
Using a computer unrelated to school	n/s	62.9	70.8	112.7
Playing video games	n/s	28.5	23.2	81.5
Talking on the telephone	<b>-0.001</b>	48.2	63.5	131.6
Listening to music	<b>-0.001</b>	56.8	68.6	120.7

\* Mean scores are based on the 4-point scale of Table 31, rescaled to 0-100.

**Table 48. Self concept**

Question and response choices	2011				2009			
	Statistical Significance	Scale Score, Recent Alcohol Consumption			Statistical Significance	Scale Score, Recent Alcohol Consumption		
		NO	YES	YES/NO		NO	YES	YES/NO
How much do you disagree or agree with the following:	p-value	% of max	% of max	% ratio	p-value	% of max	% of max	% ratio
I am good at making friends.	n/s	71.1	73.4	103.1	n/s	71.0	71.5	100.6
I feel no one understands me.	n/s	29.9	33.6	112.5	n/s	26.4	31.3	118.7
At times, I think I am no good at all.	n/s	31.6	34.0	107.7	<b>-0.001</b>	28.5	35.6	124.9
I feel lonely.	<0.05	27.9	34.1	122.3	n/s	24.8	30.6	123.7
I am good at making decisions.	<b>-0.001</b>	72.1	63.1	87.5	<b>n/s</b>	69.9	63.7	91.2
I feel that no one really cares about me.	<0.05	19.6	26.0	132.5	n/s	17.9	22.1	123.4
I feel I do not have much to be proud of.	<0.05	24.4	31.9	131.1	<b>&lt;0.001</b>	21.7	30.2	139.4
I think I have a good sense of humor.	n/s	74.8	74.3	99.3	n/s	73.2	76.0	103.8
I often have trouble sleeping.	n/s	38.9	41.2	106.1	<b>n/s</b>	36.4	40.1	110.3
I feel sad most of the time.	<b>-0.001</b>	22.8	30.2	132.0	<b>&lt;0.001</b>	20.7	28.4	137.1
On the whole, I like myself.	<b>&lt;0.001</b>	75.8	67.7	89.4	n/s	75.4	71.3	94.6
I have so much energy, I don't know what to do with it.	n/s	40.9	37.2	91.0	n/s	38.4	39.3	102.3
I have less energy than I think I should.	n/s	33.1	40.4	121.8	n/s	30.2	37.1	122.9
I have a number of good qualities.	n/s	76.8	72.8	94.8	n/s	77.0	71.9	93.4
All in all, I am glad I am me.	<b>&lt;0.001</b>	78.4	71.0	90.5	n/s	78.0	69.8	89.5
I am restless and can't sit still	n/s	41.0	45.9	111.9	<0.05	36.0	41.8	116.1
I have trouble concentrating.	n/s	44.6	51.9	116.4	<b>&lt;0.001</b>	40.1	49.6	123.7

Higher score means STRONGER AGREEMENT by average respondent.

**Table 48, continued. Self concept**

Question and response choices	2013			
	Statistical Significance	Scale Score, Recent Alcohol Consumption		
		NO	YES	YES/NO
How much do you disagree or agree with the following:	p-value	% of max	% of max	% ratio
I am good at making friends.	n/s	72.7	76.1	104.6
I feel no one understands me.	<0.05	34.4	36.1	104.9
At times, I think I am no good at all.	n/s	38.1	39.7	104.1
I feel lonely.	n/s	32.9	36.2	110.3
I am good at making decisions.	<b>~0.001</b>	70.5	66.5	94.5
I feel that no one really cares about me.	~0.001	23.8	26.5	111.3
I feel I do not have much to be proud of.	n/s	26.4	28.7	108.5
I think I have a good sense of humor.	<0.05	74.2	73.0	98.5
I often have trouble sleeping.	<0.05	38.7	46.3	119.5
I feel sad most of the time.	<b>~0.001</b>	24.4	31.6	129.6
On the whole, I like myself.	<b>&lt;0.001</b>	72.6	66.0	90.8
I have so much energy, I don't know what to do with it.	n/s	44.5	38.7	86.9
I have less energy than I think I should.	n/s	34.1	44.6	130.9
I have a number of good qualities.	<b>&lt;0.001</b>	74.1	69.9	94.2
All in all, I am glad I am me.	<b>&lt;0.001</b>	76.7	71.3	93.0
I am restless and can't sit still	n/s	38.0	36.6	96.3
I have trouble concentrating.	<b>~0.001</b>	45.0	51.2	113.7

\* Mean scores are based on the 4-point scale of Table 32, rescaled to 0-100.



**Table 49. Perceived reasons for drinking**

Question and response choices	2011				2009			
	Statistical Significance	Scale Score, Recent Alcohol Consumption			Statistical Significance	Scale Score, Recent Alcohol Consumption		
		NO	YES	YES/NO		NO	YES	YES/NO
For people your age who drink, how important are the following reasons?	p-value	% of max	% of max	% ratio	p-value	% of max	% of max	% ratio
Fit in with friends	<b>&lt;0.001</b>	70.5	57.6	81.6	<b>&lt;0.001</b>	65.2	57.6	88.4
Family members drink	<b>~0.001</b>	49.7	38.4	77.3	n/s	46.6	39.2	84.1
Alcohol easily available	n/s	50.0	46.3	92.6	n/s	47.1	52.1	110.5
Family tradition for special occasions	n/s	41.7	37.4	89.7	n/s	38.9	33.0	84.9
Personal choice	n/s	55.0	73.8	134.3	<b>~0.001</b>	58.0	72.8	125.5
Fits chosen lifestyle	n/s	41.9	46.7	111.5	n/s	43.2	48.3	112.0
Boredom	n/s	48.6	58.1	119.7	n/s	49.0	59.1	120.6
Relieve stress	n/s	59.7	59.8	100.2	n/s	55.9	58.5	104.7
Curiosity	n/s	62.1	64.9	104.4	n/s	59.9	64.5	107.7
To have fun	n/s	68.6	81.2	118.3	<0.05	67.1	85.1	126.9
Don't know	n/s	37.1	41.8	112.5	n/s	40.3	42.0	104.1

Higher score means MORE IMPORTANCE attached by average respondent.

**Table 49, continued Perceived reasons for drinking**

Question and response choices	2013			
	Statistical Significance	Scale Score, Recent Alcohol Consumption		
		NO	YES	YES/NO
For people your age who drink, how important are the following reasons?	p-value	% of max	% of max	% ratio
Fit in with friends	<b>&lt;0.001</b>	72.8	53.4	73.3
Family members drink	<0.05	52.1	34.9	66.9
Alcohol easily available	n/s	53.7	49.3	91.7
Family tradition for special occasions	n/s	42.2	37.7	89.4
Personal choice	n/s	62.8	71.3	113.6
Fits chosen lifestyle	n/s	45.3	39.0	86.1
Boredom	n/s	48.6	55.7	114.7
Relieve stress	<0.05	63.7	53.0	83.2
Curiosity	<0.05	62.8	57.9	92.3
To have fun	n/s	72.6	81.1	111.8
Don't know	n/s	40.1	36.3	90.4

\* Mean scores are based on the 3-point scale of Table 20, scale inverted and rescaled to 0-100.

**Table 50. Perceived reasons NOT to drink**

Question and response choices	2011				2009			
	Statistical Significance	Scale Score, Recent Alcohol Consumption			Statistical Significance	Scale Score, Recent Alcohol Consumption		
		NO	YES	YES/NO		NO	YES	YES/NO
For people your age who do not drink, how important are the following reasons?	p-value	% of max	% of max	% ratio	p-value	% of max	% of max	% ratio
Personal choice	n/s	80.5	85.3	105.9	n/s	84.7	82.3	97.2
Disapproval of parents	n/s	75.4	69.8	92.5	<0.05	76.7	65.1	84.9
Disapproval of friends	n/s	70.7	61.8	87.4	<b>~0.001</b>	71.0	54.8	77.1
Bad experiences of family, friends	n/s	75.1	73.3	97.6	n/s	71.7	72.6	101.2
Education about alcohol	n/s	66.5	50.5	75.9	n/s	66.8	44.8	67.0
Health reasons	<0.05	77.8	65.0	83.5	n/s	76.7	64.5	84.1
Legal reasons	<b>~0.001</b>	71.6	53.2	74.3	<0.05	72.1	56.0	77.7
Ethical or moral reasons	n/s	78.4	72.9	93.0	n/s	80.2	69.3	86.3
Does not fit lifestyle	n/s	72.9	74.1	101.7	n/s	76.9	69.4	90.2
Alcohol not available	<0.05	43.7	47.6	108.8	<b>~0.001</b>	44.5	49.2	110.4

Higher score means MORE IMPORTANCE attached by average respondent.

**Table 50, continued. Perceived reasons NOT to drink**

Question and response choices	2013			
	Statistical Significance	Scale Score, Recent Alcohol Consumption		
		NO	YES	YES/NO
For people your age who do not drink, how important are the following reasons?	p-value	% of max	% of max	% ratio
Personal choice	n/s	85.1	84.7	99.5
Disapproval of parents	n/s	78.1	72.1	92.4
Disapproval of friends	<0.05	73.4	59.4	80.9
Bad experiences of family, friends	n/s	75.3	68.7	91.3
Education about alcohol	n/s	69.1	49.6	71.8
Health reasons	<b>~0.001</b>	76.4	62.8	82.1
Legal reasons	n/s	74.1	59.9	80.8
Ethical or moral reasons	<b>~0.001</b>	81.1	70.9	87.5
Does not fit lifestyle	n/s	76.7	70.4	91.8
Alcohol not available	n/s	46.7	51.5	110.1

\* Mean scores are based on the 3-point scale of Table 21, scale inverted and rescaled to 0-100.

**Table 51. Other characteristics related to alcohol consumption**

Question and response choices	2011				2009			
	Statistical Significance	Scale Score, Recent Alcohol Consumption			Statistical Significance	Scale Score, Recent Alcohol Consumption		
		NO	YES	YES/NO		NO	YES	YES/NO
	p-value	% of max	% of max	% ratio	p-value	% of max	% of max	% ratio
Weekday time after school without adult present	<b>&lt;0.001</b>	49.6	65.8	132.8	<b>&lt;0.001</b>	48.9	65.9	134.9
Does either parent drink alcohol?	<b>~0.001</b>	79.5	92.2	116.0	<b>&lt;0.001</b>	80.4	91.8	114.2
Do siblings drink alcohol?	<0.05	58.8	83.7	142.4	<b>&lt;0.001</b>	52.4	83.7	159.7
Anyone in family ever had problems with alcohol	n/s	17.5	28.3	161.8	<b>&lt;0.001</b>	14.6	33.9	232.8
How many close friends drink alcohol?	<b>&lt;0.001</b>	25.3	78.1	309.3	<b>&lt;0.001</b>	25.2	81.1	322.3
What kinds of grades do you mostly get?	n/s	73.0	71.9	98.5	<b>~0.001</b>	47.7	40.7	85.4
How many hours a day doing homework?	<b>&lt;0.001</b>	59.8	51.1	85.4	<0.05	55.9	49.0	87.7

**Table 51, continued. Other characteristics related to alcohol consumption**

Question and response choices	2013			
	Statistical Significance	Scale Score, Recent Alcohol Consumption		
		NO	YES	YES/NO
	p-value	% of max	% of max	% ratio
Weekday time after school without adult present	<0.05	48.7	63.2	129.8
Does either parent drink alcohol?	n/s	81.9	92.6	113.1
Do siblings drink alcohol?	<b>~0.001</b>	62.2	95.2	153.0
Anyone in family ever had problems with alcohol	<b>~0.001</b>	13.0	25.8	198.3
How many close friends drink alcohol?	<b>&lt;0.001</b>	22.0	76.3	346.3
What kinds of grades do you mostly get?	n/s	50.9	61.2	98.5
How many hours a day doing homework?	n/s	61.7	56.8	92.1

Tables in this section compare respondents (in all grades) who reported drinking alcoholic beverages within the past 30 days (YES) with those who reported they had not (NO). Mean scores reported in each table are derived from the same data used to generate the table in previous sections of this report. Mean scores are expressed as percent of maximum possible score, with all intensity scales ascending. The statistical procedure is 2-Way Analysis of Variance: Dependent Variable = RAC (Recent Alcohol Consumption) + Grade + (RAC × Grade). The effect of alcohol use is thus separated from the effect of age on the dependent variable.